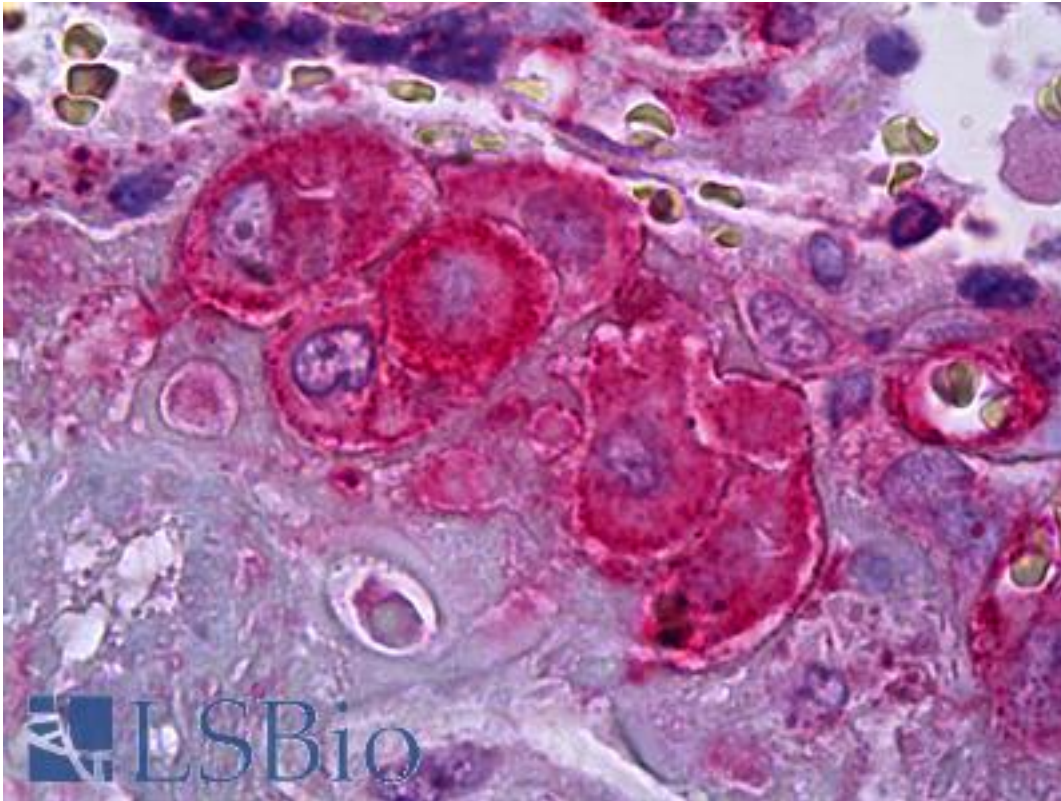


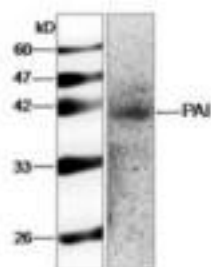
SERPINE1 / PAI-1 Mouse anti-Human Monoclonal Antibody - LS-B6422 - LSBio	
<b>CatalogID:</b>	LS-B6422
<b>Validation:</b>	This antibody replaces catalog number LS-C137499. It has been validated for use in the following assays: IHC-P.
<b>Target:</b>	serpin peptidase inhibitor, clade E (nexin, plasminogen activator inhibitor type 1), member 1 (SERPINE1)
<b>Synonyms:</b>	SERPINE1 Antibody, PAI1 Antibody, PLANH1 Antibody, PAI-1 Antibody, Serpin E1 Antibody
<b>Family / Subfamily:</b>	Serine Protease Inhibitor
<b>Host</b>	SERPINE1 antibody was produced in Mouse
<b>Clonality:</b>	Monoclonal
<b>Isotype:</b>	IgG2b
<b>Immunogen Species:</b>	SERPINE1 / PAI-1 antibody was raised against Human
<b>Antigen Type:</b>	Recombinant protein
<b>Immunogen:</b>	SERPINE1 / PAI-1 antibody was raised against recombinant protein
<b>Specificity:</b>	Anti-PAI recognizes PAI expression in BGC-823 whole cell lysate.
<b>Reactivity:</b>	Human
<b>Purification:</b>	Affinity purified
<b>Presentation:</b>	Citrate-Tris-HCl buffer, pH 7.0, 0.02% Proclin 300
<b>Recommended Storage:</b>	Short term 4°C, long term aliquot and store at -20°C, avoid freeze thaw cycles.
<b>Uses:</b>	IHC - Paraffin (20 µg/ml), Western blot (1:1000), ELISA (Optimal dilution to be determined by the researcher)
<b>Size:</b>	50 µl
<b>Concentration:</b>	1 mg/ml

**Immunohistochemistry Image:**



Anti-SERPINE1 / PAI-1 antibody IHC of human placenta, decidual cells. Immunohistochemistry of formalin-fixed, paraffin-embedded tissue after heat-induced antigen retrieval. Antibody LS-B6422 concentration 20 ug/ml.

**Western Blot Image:**



Requested From:

Japan

Laboratory Reagent For In Vitro Research Use Only

Not for resale without prior written consent from LifeSpan BioSciences, Inc.

Created on 9/24/2014

© 2014 LifeSpan BioSciences