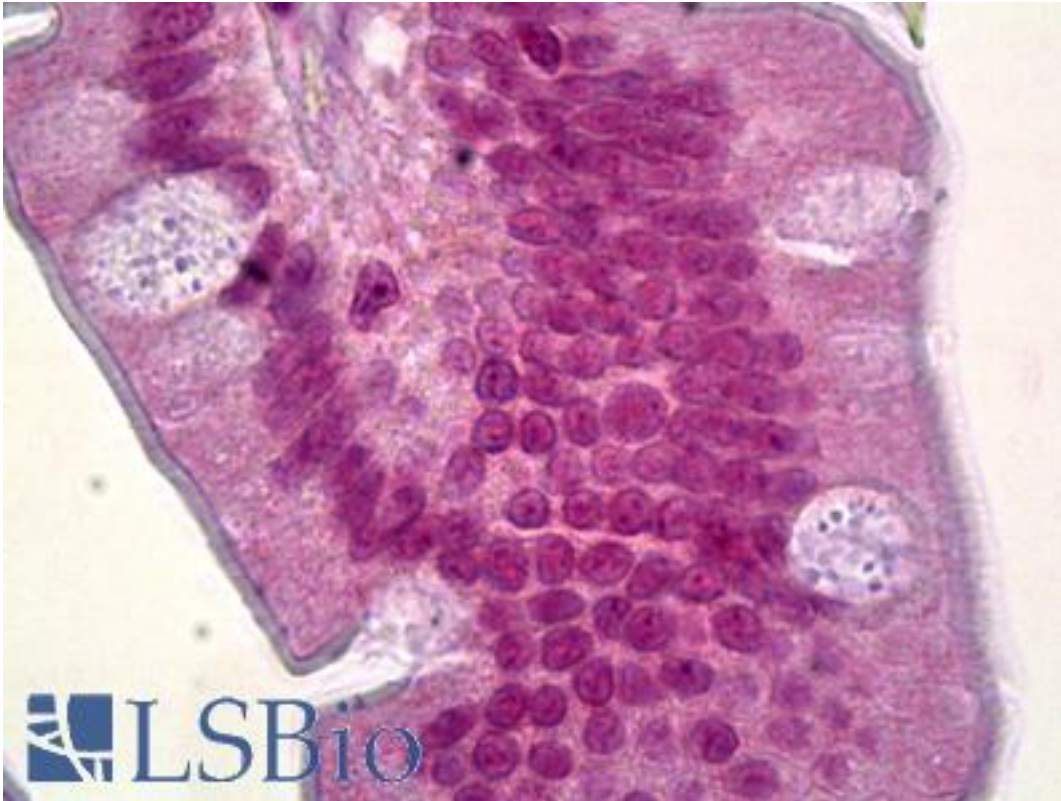


**FOXQ1 Mouse anti-Human Monoclonal (2E2) Antibody - LS-B6409 - LSBio**

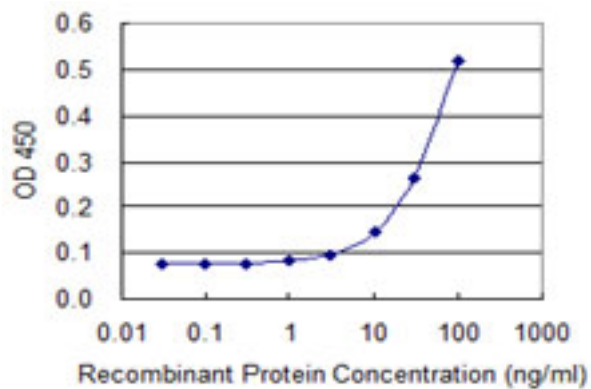
<b>CatalogID:</b>	LS-B6409
<b>Validation:</b>	This antibody replaces catalog number LS-C139139. It has been validated for use in the following assays: IHC-P.
<b>Target:</b>	forkhead box Q1 (FOXQ1)
<b>Synonyms:</b>	FOXQ1 Antibody, Forkhead box Q1 Antibody, HFH-1 Antibody, HNF-3/forkhead-like protein 1 Antibody, HFH1 Antibody, Forkhead box protein Q1 Antibody
<b>Host</b>	FOXQ1 antibody was produced in Mouse
<b>Clonality:</b>	Monoclonal
<b>Isotype:</b>	IgG2b,k
<b>Clone Name:</b>	2E2
<b>Immunogen Species:</b>	FOXQ1 antibody was raised against Human
<b>Antigen Type:</b>	Recombinant protein
<b>Immunogen:</b>	FOXQ1 antibody was raised against recombinant protein
<b>Specificity:</b>	Human FOXQ1
<b>Reactivity:</b>	Human
<b>Purification:</b>	Protein A purified
<b>Presentation:</b>	PBS, pH 7.2
<b>Recommended Storage:</b>	Short term 4°C, long term aliquot and store at -20°C, avoid freeze thaw cycles.
<b>Usage Summary:</b>	Sandwich ELISA: Recombinant protein.
<b>Uses:</b>	IHC - Paraffin (5 µg/ml), ELISA (Optimal dilution to be determined by the researcher)
<b>Size:</b>	50 µg
<b>Concentration:</b>	0.33 mg/ml

**Immunohistochemistry Image:**



Anti-FOXQ1 antibody IHC of human small intestine. Immunohistochemistry of formalin-fixed, paraffin-embedded tissue after heat-induced antigen retrieval. Antibody LS-B6409 concentration 5 ug/ml.

**ELISA Image:**



Detection limit for recombinant GST tagged FOXQ1 is 3 ng/ml as a capture antibody.

**Requested From:**

Japan

Laboratory Reagent For In Vitro Research Use Only

Not for resale without prior written consent from LifeSpan BioSciences, Inc.

Created on 9/24/2014

© 2014 LifeSpan BioSciences