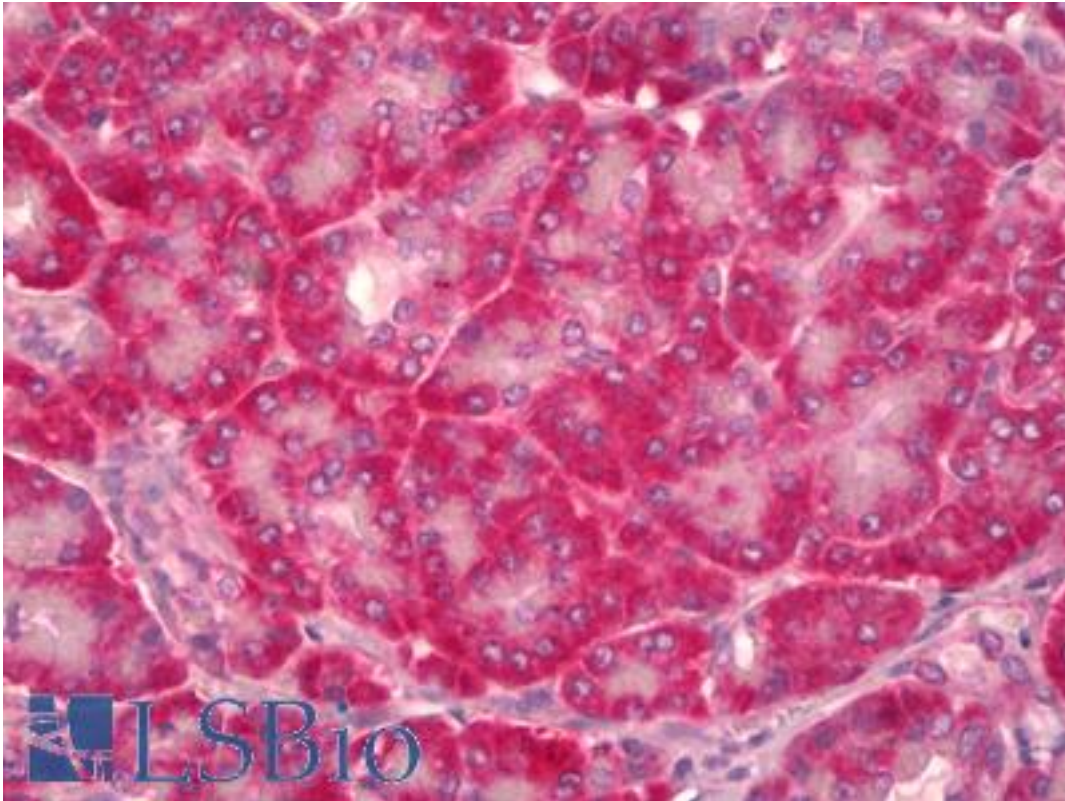


CCN3 / NOV Mouse anti-Human Monoclonal (2G8) Antibody - LS-B6407 - LSBio

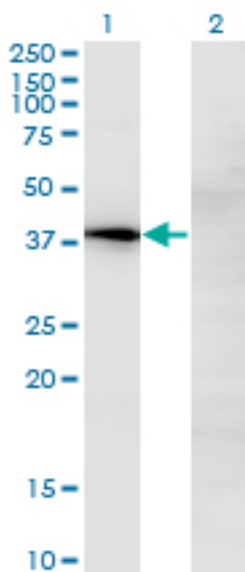
CatalogID:	LS-B6407
Validation:	This antibody replaces catalog number LS-C139132. It has been validated for use in the following assays: IHC-P.
Target:	nephroblastoma overexpressed (NOV)
Synonyms:	NOV Antibody, CCN3 Antibody, CCN family member 3 Antibody, IGFBP9 Antibody, IBP-9 Antibody, IGFBP-9 Antibody, NOVh Antibody, IGF-binding protein 9 Antibody, Nephroblastoma overexpressed Antibody, Protein NOV homolog Antibody
Host	NOV antibody was produced in Mouse
Clonality:	Monoclonal
Isotype:	IgG2a,k
Clone Name:	2G8
Immunogen Species:	CCN3 / NOV antibody was raised against Human
Antigen Type:	Recombinant protein
Immunogen:	CCN3 / NOV antibody was raised against recombinant protein
Specificity:	Human NOV / CCN3
Reactivity:	Human
Purification:	Protein A purified
Presentation:	PBS, pH 7.2
Recommended Storage:	Short term 4°C, long term aliquot and store at -20°C, avoid freeze thaw cycles.
Usage Summary:	Western Blot: Transfected lysate, Recombinant protein.
Uses:	IHC - Paraffin (5 µg/ml), Western blot, Immunoprecipitation, ELISA (Optimal dilution to be determined by the researcher)
Size:	50 µg
Concentration:	0.5 mg/ml

Immunohistochemistry Image:



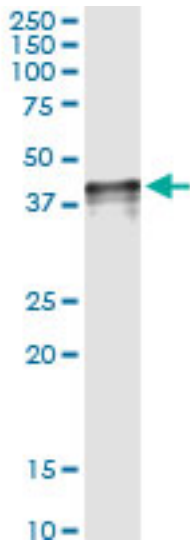
Anti-NOV / CCN3 antibody IHC of human pancreas. Immunohistochemistry of formalin-fixed, paraffin-embedded tissue after heat-induced antigen retrieval. Antibody LS-B6407 concentration 5 ug/ml.

Western Blot Image:



Western blot of NOV expression in transfected 293T cell line by NOV monoclonal antibody, clone 2G8.

Immunoprecipitation Image:



Immunoprecipitation of NOV transfected lysate using anti-NOV monoclonal antibody and Protein A magnetic bead, immunoblotted with NOV rabbit polyclonal antibody.

Requested From:

Japan

Laboratory Reagent For In Vitro Research Use Only

Not for resale without prior written consent from LifeSpan BioSciences, Inc.

Created on 9/24/2014

© 2014 LifeSpan BioSciences