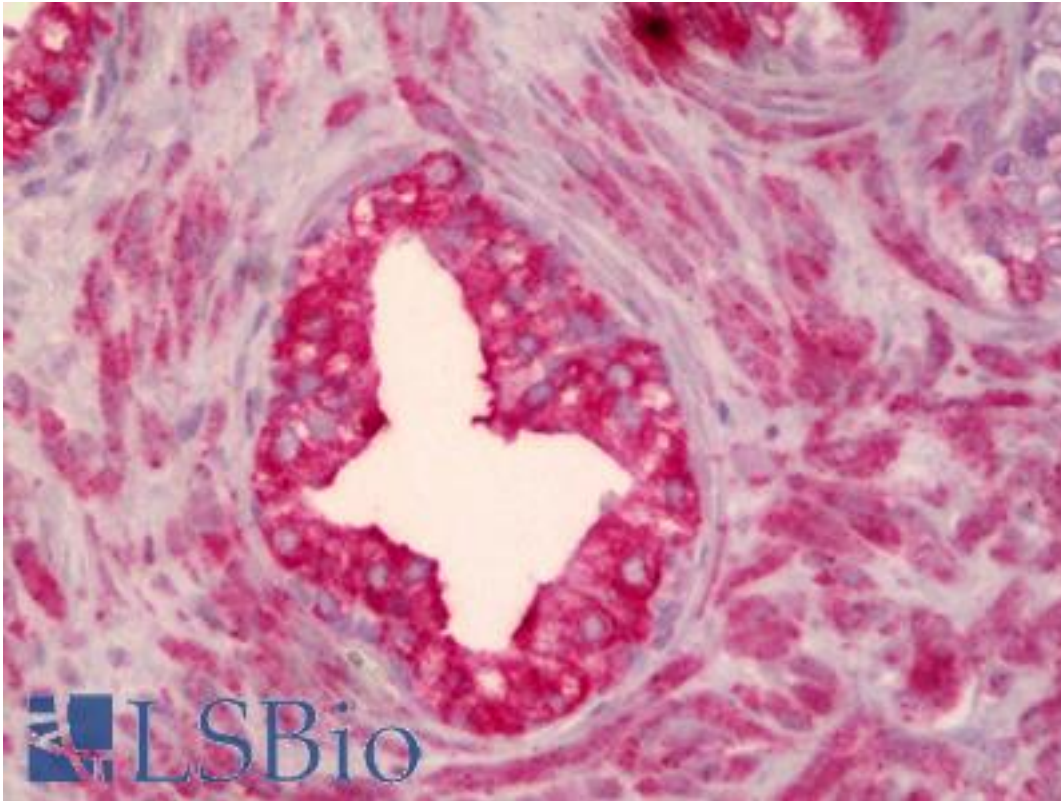


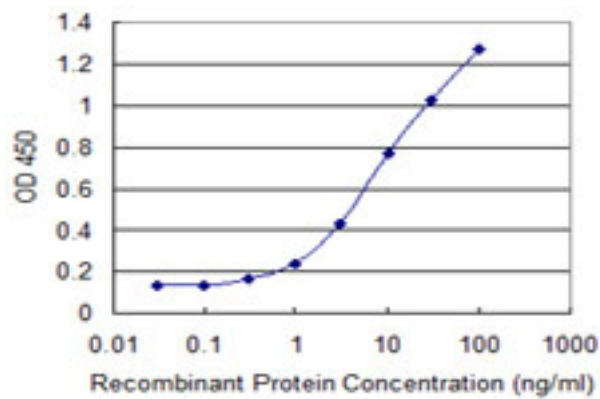
SMO / Smoothened Mouse anti-Human Monoclonal (3D10) Antibody - LS-B6399 - LSBio	
CatalogID:	LS-B6399
Validation:	This antibody replaces catalog number LS-C139115. It has been validated for use in the following assays: IHC-P.
Target:	smoothened, frizzled class receptor
Synonyms:	SMO Antibody, Frizzled family member 11 Antibody, FZD11 Antibody, Gx Antibody, Protein Gx Antibody, SMOH Antibody, Smoothened Antibody, Smoothened homolog Antibody
Family / Subfamily:	GPCR / Frizzled
Host	SMO antibody was produced in Mouse
Clonality:	Monoclonal
Isotype:	IgG2a,k
Clone Name:	3D10
Immunogen Species:	SMO / Smoothened antibody was raised against Human
Antigen Type:	Recombinant protein
Immunogen:	SMO / Smoothened antibody was raised against recombinant protein
Specificity:	Human SMO / Smoothened
Reactivity:	Human
Purification:	Protein A purified
Presentation:	PBS, pH 7.4.
Recommended Storage:	Store at -20°C or lower. Aliquot to avoid repeated freezing and thawing.
Usage Summary:	Sandwich ELISA: Recombinant protein. Western Blot: Recombinant protein.
Uses:	IHC - Paraffin (5 µg/ml), Western blot, ELISA (Optimal dilution to be determined by the researcher)
Size:	50 µg
Concentration:	0.9 mg/ml

Immunohistochemistry Image:



Anti-SMO antibody IHC of human prostate. Immunohistochemistry of formalin-fixed, paraffin-embedded tissue after heat-induced antigen retrieval. Antibody LS-B6399 concentration 5 ug/ml.

ELISA Image:



Detection limit for recombinant GST tagged SMO is 0.1 ng/ml as a capture antibody.

Requested From:

Japan

Laboratory Reagent For In Vitro Research Use Only

Not for resale without prior written consent from LifeSpan BioSciences, Inc.

Created on 9/24/2014

© 2014 LifeSpan BioSciences