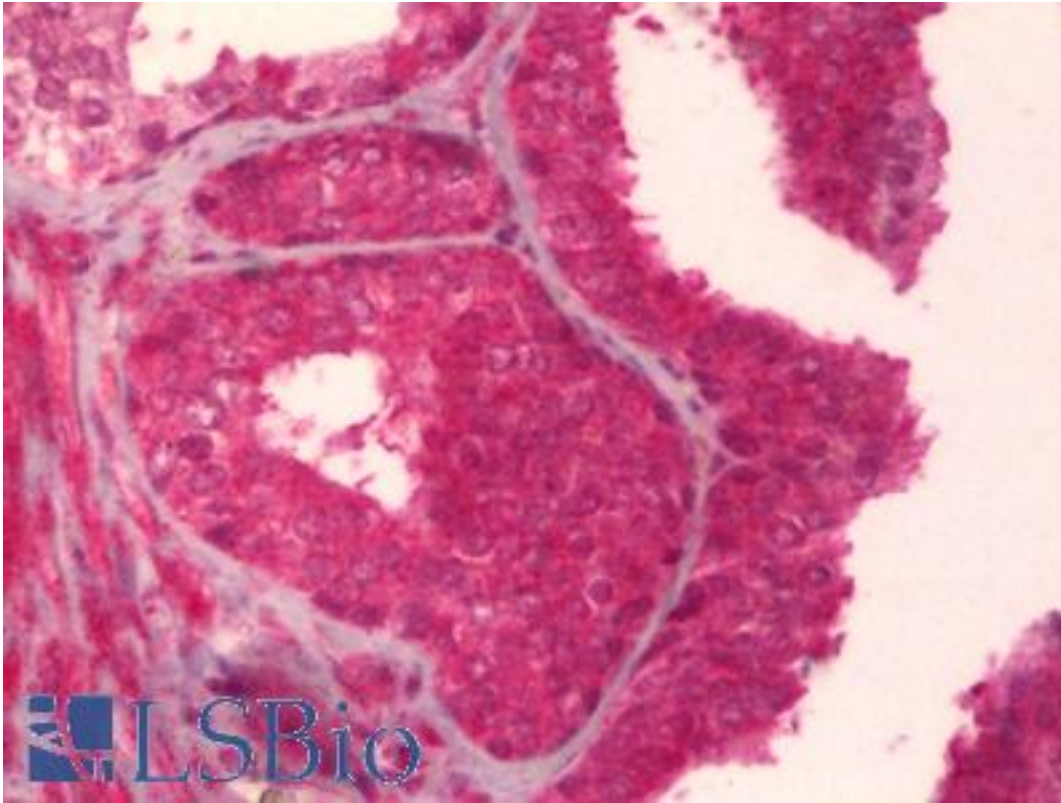


TIE1 / TIE Mouse anti-Human Monoclonal (1G10) Antibody - LS-B6397 - LSBio

<b>CatalogID:</b>	LS-B6397
<b>Validation:</b>	This antibody replaces catalog number LS-C139111. It has been validated for use in the following assays: IHC-P.
<b>Target:</b>	tyrosine kinase with immunoglobulin-like and EGF-like domains 1 (TIE1)
<b>Synonyms:</b>	TIE1 Antibody, JTK14 Antibody, TIE Antibody, Tie-1 Antibody
<b>Family / Subfamily:</b>	Protein Kinase / Tie/Tek
<b>Host</b>	TIE1 antibody was produced in Mouse
<b>Clonality:</b>	Monoclonal
<b>Isotype:</b>	IgG2a,k
<b>Clone Name:</b>	1G10
<b>Immunogen Species:</b>	TIE1 / TIE antibody was raised against Human
<b>Antigen Type:</b>	Recombinant protein
<b>Immunogen:</b>	TIE1 / TIE antibody was raised against recombinant protein
<b>Specificity:</b>	Human TIE1
<b>Reactivity:</b>	Human
<b>Purification:</b>	Protein A purified
<b>Presentation:</b>	PBS, pH 7.4.
<b>Recommended Storage:</b>	Short term 4°C, long term aliquot and store at -20°C, avoid freeze thaw cycles.
<b>Usage Summary:</b>	Western Blot: Recombinant protein.
<b>Uses:</b>	IHC - Paraffin (5 µg/ml), Western blot, ELISA (Optimal dilution to be determined by the researcher)
<b>Size:</b>	50 µg
<b>Concentration:</b>	0.5 mg/ml

**Immunohistochemistry Image:**



Anti-TIE1 antibody IHC of human prostate. Immunohistochemistry of formalin-fixed, paraffin-embedded tissue after heat-induced antigen retrieval. Antibody LS-B6397 concentration 5 ug/ml.

**Requested From:**

Japan

Laboratory Reagent For In Vitro Research Use Only

Not for resale without prior written consent from LifeSpan BioSciences, Inc.

Created on 9/24/2014

© 2014 LifeSpan BioSciences