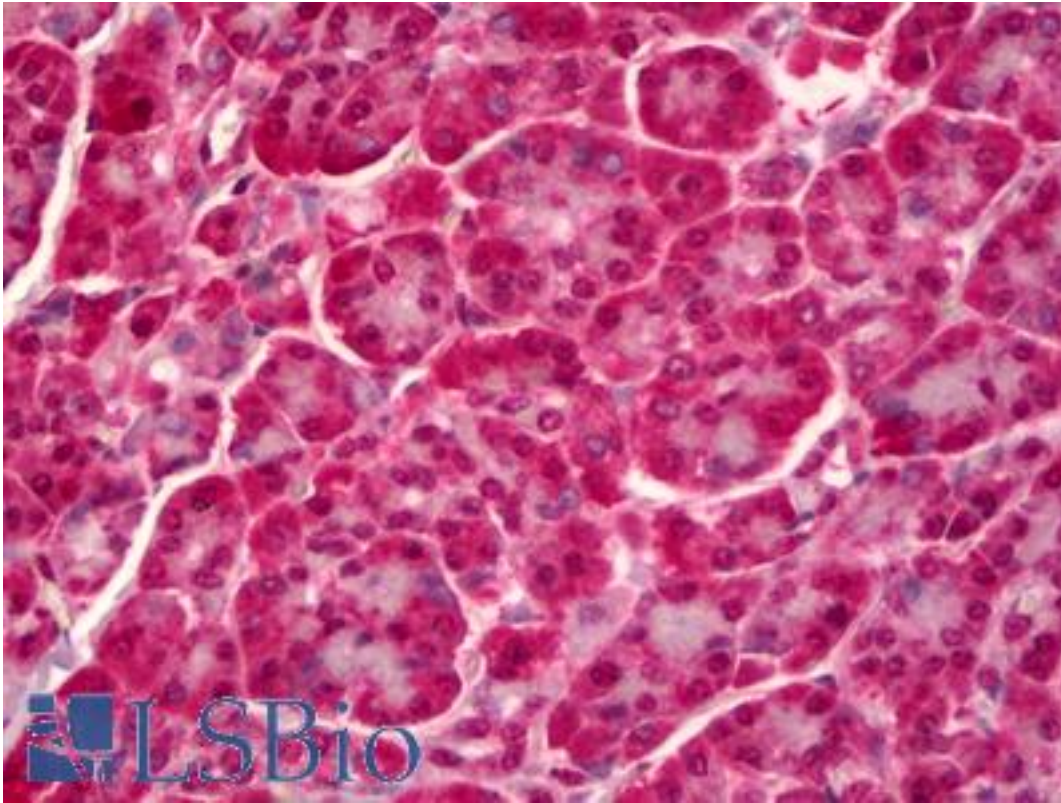


PTPN22 / PEP Mouse anti-Human Monoclonal (1A6) Antibody - LS-B6396 - LSBio	
<b>CatalogID:</b>	LS-B6396
<b>Validation:</b>	This antibody replaces catalog number LS-C139108. It has been validated for use in the following assays: IHC-P.
<b>Target:</b>	protein tyrosine phosphatase, non-receptor type 22 (lymphoid) (PTPN22)
<b>Synonyms:</b>	PTPN22 Antibody, 70zpep Antibody, Lymphoid phosphatase Antibody, LYP Antibody, PEST-domain phosphatase Antibody, LYP2 Antibody, LYP1 Antibody, PEP Antibody, PTPN8 Antibody
<b>Family / Subfamily:</b>	Protein Phosphatase / NT4
<b>Host</b>	PTPN22 antibody was produced in Mouse
<b>Clonality:</b>	Monoclonal
<b>Isotype:</b>	IgG2a,k
<b>Clone Name:</b>	1A6
<b>Immunogen Species:</b>	PTPN22 / PEP antibody was raised against Human
<b>Antigen Type:</b>	Recombinant protein
<b>Immunogen:</b>	PTPN22 / PEP antibody was raised against recombinant protein
<b>Specificity:</b>	Human PTPN22
<b>Reactivity:</b>	Human
<b>Purification:</b>	Protein A purified
<b>Presentation:</b>	PBS, pH 7.2
<b>Recommended Storage:</b>	Short term 4°C, long term aliquot and store at -20°C, avoid freeze thaw cycles.
<b>Usage Summary:</b>	Western Blot: Recombinant protein.
<b>Uses:</b>	IHC - Paraffin (5 µg/ml), Western blot, ELISA (Optimal dilution to be determined by the researcher)
<b>Size:</b>	50 µg

**Immunohistochemistry Image:**



Anti-PTPN22 antibody IHC of human pancreas. Immunohistochemistry of formalin-fixed, paraffin-embedded tissue after heat-induced antigen retrieval. Antibody LS-B6396 concentration 5 ug/ml.

**Requested From:**

Japan

Laboratory Reagent For In Vitro Research Use Only

Not for resale without prior written consent from LifeSpan BioSciences, Inc.

Created on 9/24/2014

© 2014 LifeSpan BioSciences