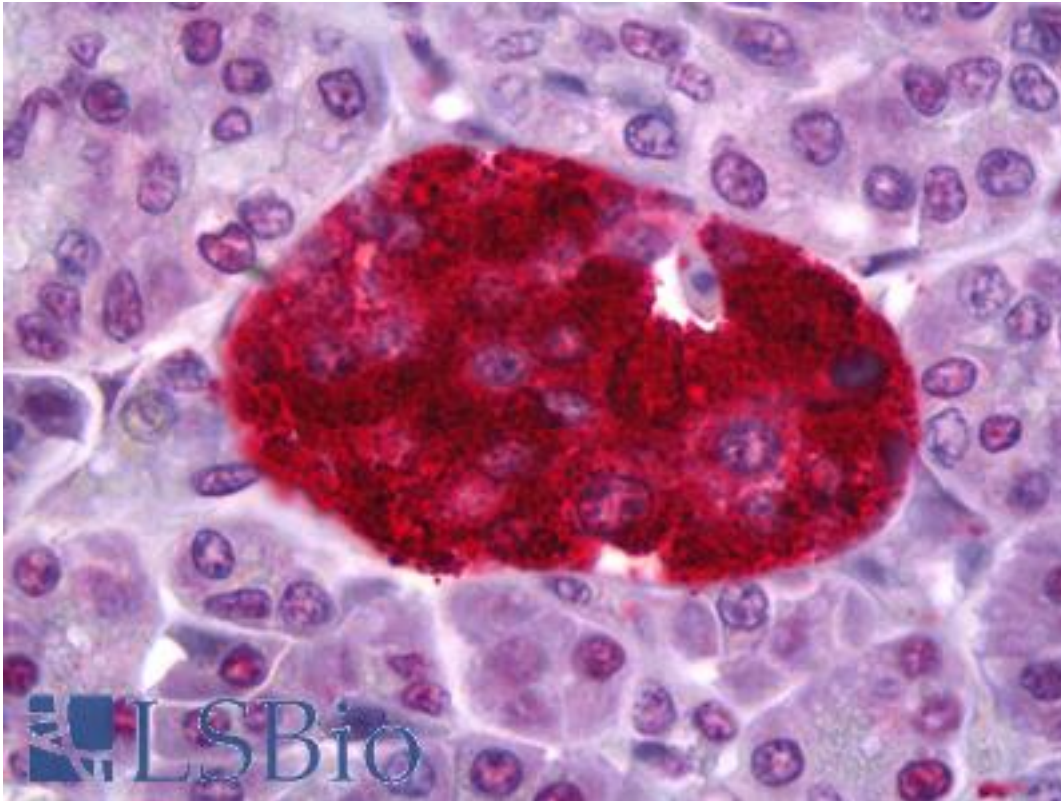


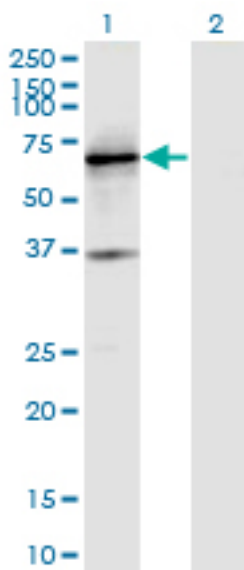
PTPRN / IA-2 Mouse anti-Human Monoclonal (8E3) Antibody - LS-B6395 - LSBio	
CatalogID:	LS-B6395
Validation:	This antibody replaces catalog number LS-C139106. It has been validated for use in the following assays: IHC-P.
Target:	protein tyrosine phosphatase, receptor type, N (PTPRN)
Synonyms:	PTPRN Antibody, ICA512 Antibody, IA2 Antibody, ICA 512 Antibody, Islet antigen 2 Antibody, Islet cell antigen 2 Antibody, Islet cell autoantigen 3 Antibody, IA-2 Antibody, Ia-2 antigen Antibody, ICA3 Antibody, PTP-NP-2 Antibody, PTP IA-2 Antibody, R-PTP-N Antibody, IA-2/PTP Antibody, Islet cell antigen 512 Antibody
Family / Subfamily:	Protein Phosphatase / R8
Host	PTPRN antibody was produced in Mouse
Clonality:	Monoclonal
Isotype:	IgG2a,k
Clone Name:	8E3
Immunogen Species:	PTPRN / IA-2 antibody was raised against Human
Antigen Type:	Recombinant protein
Immunogen:	PTPRN / IA-2 antibody was raised against recombinant protein
Specificity:	Human PTPRN
Reactivity:	Human
Purification:	Protein A purified
Presentation:	PBS, pH 7.2
Recommended Storage:	Short term 4°C, long term aliquot and store at -20°C, avoid freeze thaw cycles.
Usage Summary:	Western Blot: Transfected lysate, Recombinant protein.
Uses:	IHC - Paraffin (5 µg/ml), Western blot, ELISA (Optimal dilution to be determined by the researcher)
Size:	50 µg
Concentration:	0.5 mg/ml

Immunohistochemistry Image:



Anti-PTPRN antibody IHC of human pancreas, islets of Langerhans. Immunohistochemistry of formalin-fixed, paraffin-embedded tissue after heat-induced antigen retrieval. Antibody LS-B6395 concentration 5 ug/ml.

Western Blot Image:



Western blot of PTPRN expression in transfected 293T cell line by PTPRN monoclonal antibody, clone 8E3.

Requested From:

Japan

Laboratory Reagent For In Vitro Research Use Only

Not for resale without prior written consent from LifeSpan BioSciences, Inc.

Created on 9/24/2014

© 2014 LifeSpan BioSciences