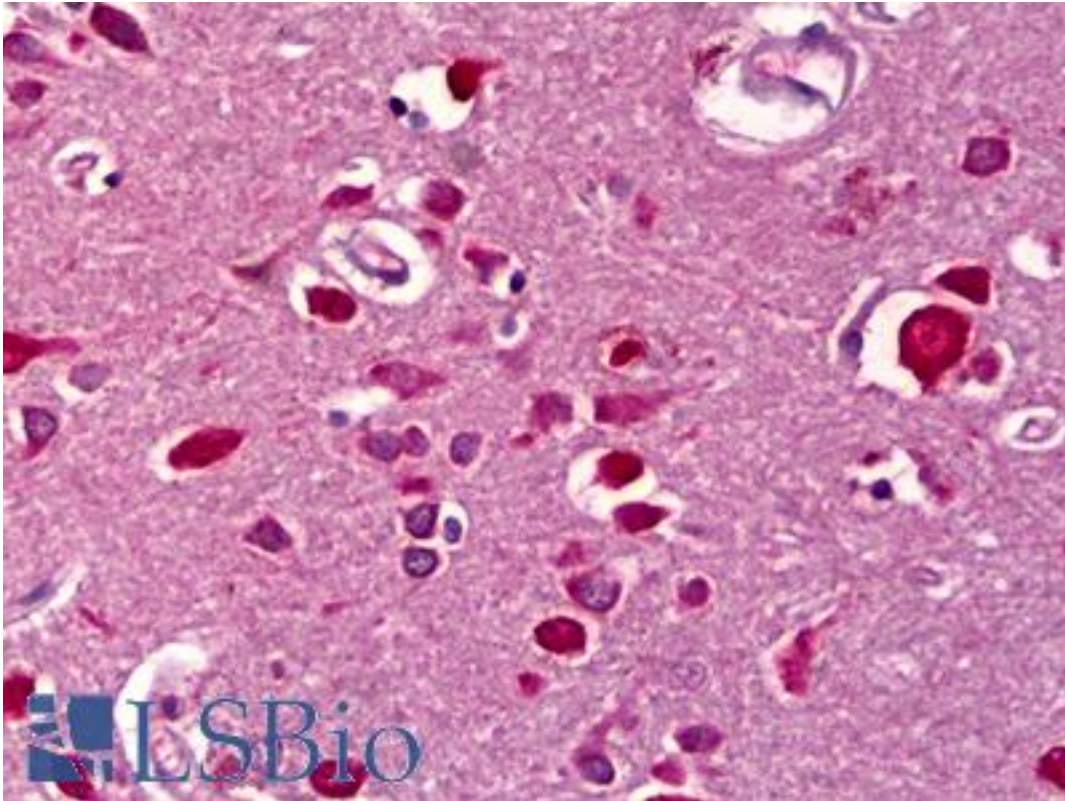


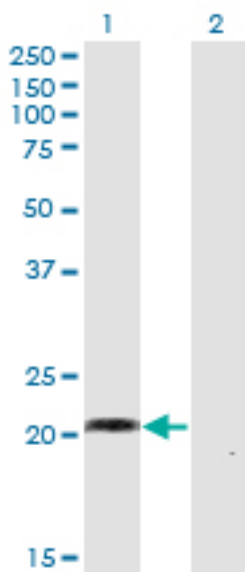
WISP2 Mouse anti-Human Monoclonal (1E11) Antibody - LS-B6392 - LSBio	
CatalogID:	LS-B6392
Validation:	This antibody replaces catalog number LS-C139096. It has been validated for use in the following assays: IHC-P.
Target:	WNT1 inducible signaling pathway protein 2 (WISP2)
Synonyms:	WISP2 Antibody, CCN5 Antibody, CCN family member 5 Antibody, CTGFL Antibody, CT58 Antibody, CTGF-L Antibody, WISP-2 Antibody
Host	WISP2 antibody was produced in Mouse
Clonality:	Monoclonal
Isotype:	IgG2a,k
Clone Name:	1E11
Immunogen Species:	WISP2 antibody was raised against Human
Antigen Type:	Recombinant protein
Immunogen:	WISP2 antibody was raised against recombinant protein
Specificity:	Human WISP2
Reactivity:	Human
Purification:	Protein A purified
Presentation:	PBS, pH 7.4. Sourced in Ascites.
Recommended Storage:	Short term 4°C, long term aliquot and store at -20°C, avoid freeze thaw cycles.
Usage Summary:	Western Blot: Transfected lysate, Recombinant protein.
Uses:	IHC - Paraffin (5 µg/ml), Western blot (1:500 - 1:1000), ELISA (Optimal dilution to be determined by the researcher)
Size:	50 µg
Concentration:	1 mg/ml

Immunohistochemistry Image:



Anti-WISP2 antibody IHC of human brain, cortex. Immunohistochemistry of formalin-fixed, paraffin-embedded tissue after heat-induced antigen retrieval. Antibody LS-B6392 concentration 5 ug/ml.

Western Blot Image:



Western blot of WISP2 expression in transfected 293T cell line by WISP2 monoclonal antibody, clone 1E11.

Requested From:

Japan

Laboratory Reagent For In Vitro Research Use Only

Not for resale without prior written consent from LifeSpan BioSciences, Inc.

Created on 9/24/2014

© 2014 LifeSpan BioSciences