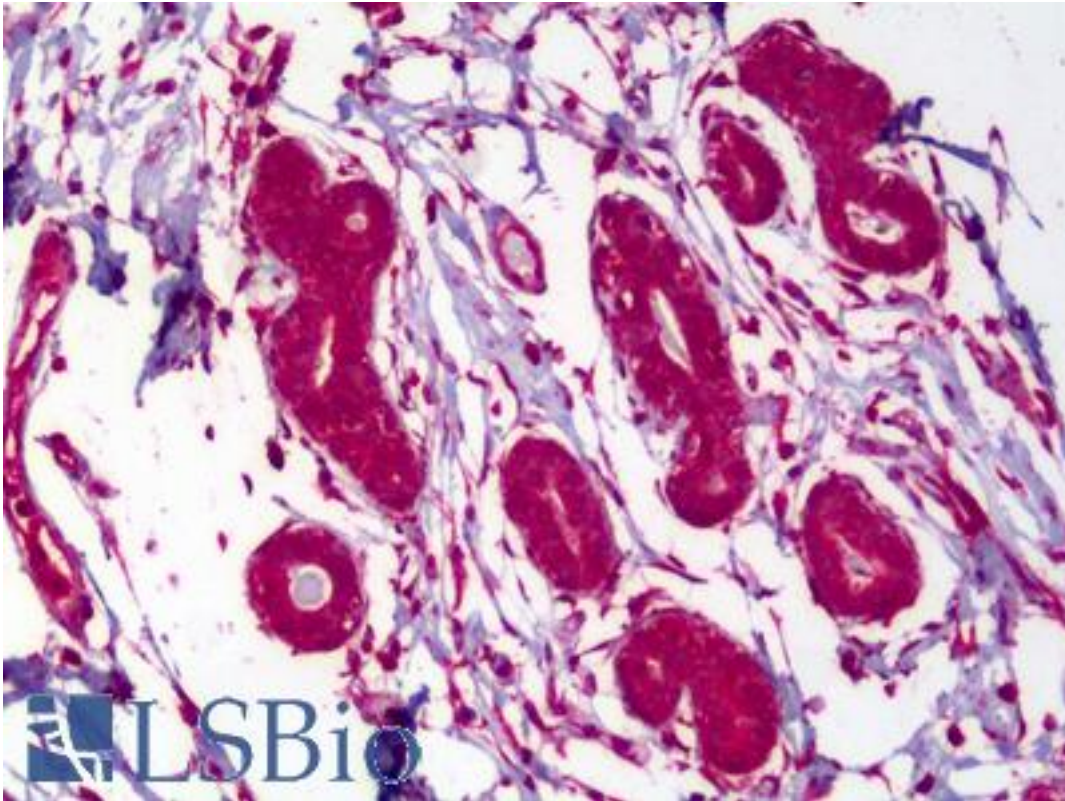


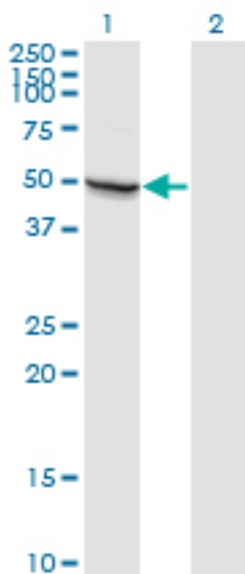
| MAPK8 / JNK1 / JNK Mouse anti-Human Monoclonal (3H2) Antibody - LS-B6391 - LSBio | |
|--|--|
| CatalogID: | LS-B6391 |
| Validation: | This antibody replaces catalog number LS-C139095. It has been validated for use in the following assays: IHC-P. |
| Target: | mitogen-activated protein kinase 8 (MAPK8) |
| Synonyms: | MAPK8 Antibody, JNK Antibody, JNK1 Antibody, JNK1A2 Antibody, JNK-46 Antibody, MAP kinase 8 Antibody, PRKM8 Antibody, SAPK1 Antibody, SAPK1c Antibody, MAPK 8 Antibody, C-Jun N-terminal kinase 1 Antibody, JNK21B1/2 Antibody, JUN N-terminal kinase Antibody |
| Family / Subfamily: | Protein Kinase / MAPK |
| Host | MAPK8 antibody was produced in Mouse |
| Clonality: | Monoclonal |
| Isotype: | IgG2a,k |
| Clone Name: | 3H2 |
| Immunogen Species: | MAPK8 / JNK1 / JNK antibody was raised against Human |
| Immunogen: | MAPK8 / JNK1 / JNK antibody was raised against recombinant protein encoding amino acids 318 to 427 of NP_620637 |
| Specificity: | Human MAPK8 / JNK1 |
| Reactivity: | Human |
| Purification: | Protein A purified |
| Presentation: | PBS, pH 7.2. Sourced in Ascites. |
| Recommended Storage: | Short term 4°C, long term aliquot and store at -20°C, avoid freeze thaw cycles. |
| Usage Summary: | Western Blot: Transfected lysate, Recombinant protein. For IP, 40 ug of antibody per 100 ul of protein A magnetic beads at 50 ug/ml is recommended as a starting point. |
| Uses: | IHC - Paraffin (2.5 µg/ml), Western blot (1:500 - 1:1000), Immunoprecipitation, ELISA (Optimal dilution to be determined by the researcher) |
| Size: | 50 µg |
| Concentration: | 0.5 mg/ml |

Immunohistochemistry Image:



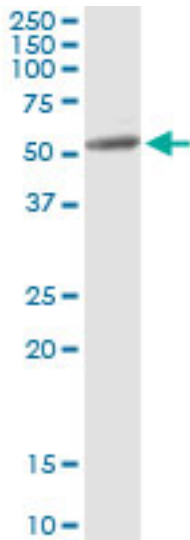
Anti-MAPK8 / JNK1 antibody IHC of human breast. Immunohistochemistry of formalin-fixed, paraffin-embedded tissue after heat-induced antigen retrieval. Antibody LS-B6391 concentration 2.5 ug/ml.

Western Blot Image:



Western blot of MAPK8 expression in transfected 293T cell line by MAPK8 monoclonal antibody, clone 3H2.

Immunoprecipitation Image:



Immunoprecipitation of MAPK8 transfected lysate using anti-MAPK8 monoclonal antibody and Protein A magnetic bead, immunoblotted with MAPK8 rabbit polyclonal antibody.

Requested From:

Japan

Laboratory Reagent For In Vitro Research Use Only

Not for resale without prior written consent from LifeSpan BioSciences, Inc.

Created on 9/24/2014

© 2014 LifeSpan BioSciences