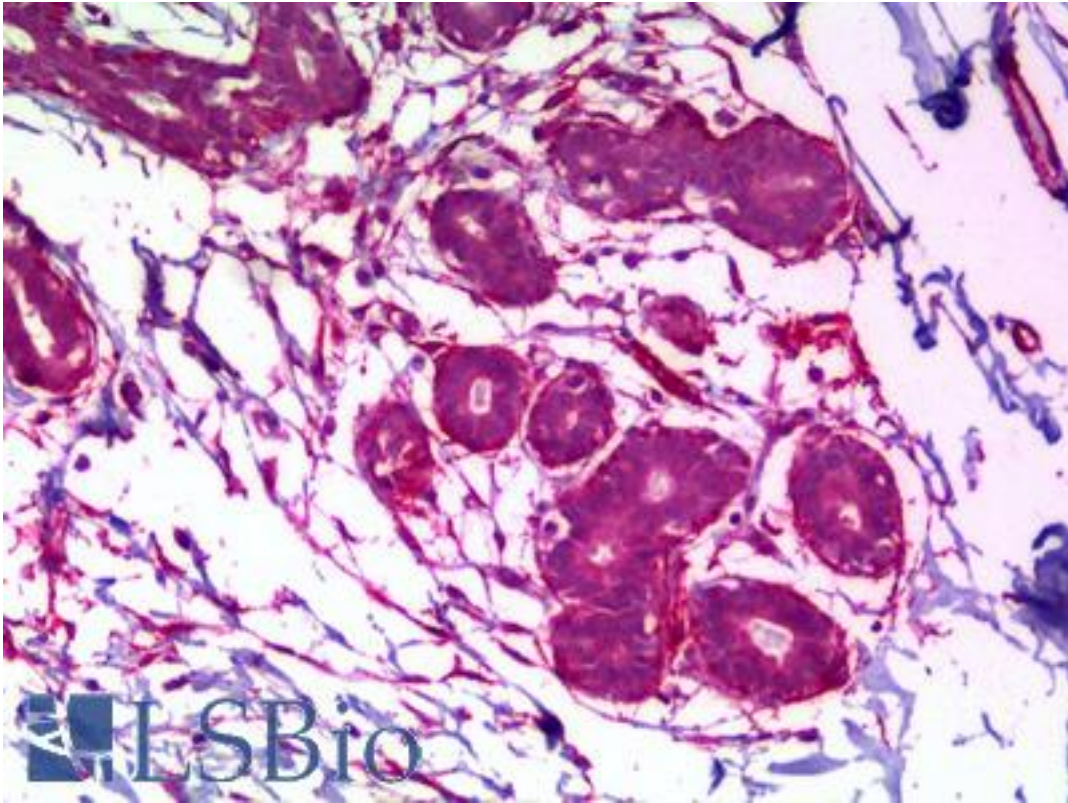


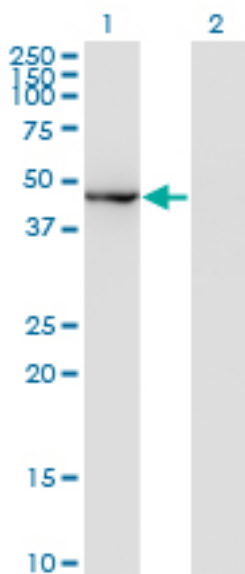
MAPK8 / JNK1 / JNK Mouse anti-Human Monoclonal (2F3) Antibody - LS-B6390 - LSBio	
<b>CatalogID:</b>	LS-B6390
<b>Validation:</b>	This antibody replaces catalog number LS-C139094. It has been validated for use in the following assays: IHC-P.
<b>Target:</b>	mitogen-activated protein kinase 8 (MAPK8)
<b>Synonyms:</b>	MAPK8 Antibody, JNK Antibody, JNK1 Antibody, JNK1A2 Antibody, JNK-46 Antibody, MAP kinase 8 Antibody, PRKM8 Antibody, SAPK1 Antibody, SAPK1c Antibody, MAPK 8 Antibody, C-Jun N-terminal kinase 1 Antibody, JNK21B1/2 Antibody, JUN N-terminal kinase Antibody
<b>Family / Subfamily:</b>	Protein Kinase / MAPK
<b>Host</b>	MAPK8 antibody was produced in Mouse
<b>Clonality:</b>	Monoclonal
<b>Isotype:</b>	IgG2a,k
<b>Clone Name:</b>	2F3
<b>Immunogen Species:</b>	MAPK8 / JNK1 / JNK antibody was raised against Human
<b>Immunogen:</b>	MAPK8 / JNK1 / JNK antibody was raised against recombinant protein encoding amino acids 318 to 427 of NP_620637
<b>Specificity:</b>	Human MAPK8 / JNK1
<b>Reactivity:</b>	Human
<b>Purification:</b>	Protein A purified
<b>Presentation:</b>	PBS, pH 7.4. Sourced in Ascites.
<b>Recommended Storage:</b>	Short term 4°C, long term aliquot and store at -20°C, avoid freeze thaw cycles.
<b>Usage Summary:</b>	Western Blot: Transfected lysate, Recombinant protein. For IP 40 ug of antibody per 100 ul of protein A magnetic beads at 50 ug/ml.
<b>Uses:</b>	IHC - Paraffin (5 µg/ml), Western blot (1:500 - 1:1000), Immunoprecipitation, ELISA (Optimal dilution to be determined by the researcher)
<b>Size:</b>	50 µg
<b>Concentration:</b>	0.5 mg/ml

**Immunohistochemistry Image:**



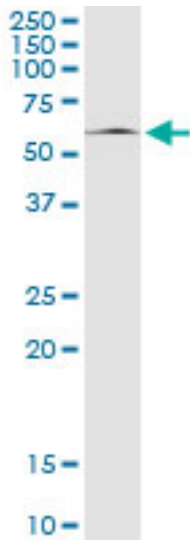
Anti-MAPK8 / JNK1 antibody IHC of human breast. Immunohistochemistry of formalin-fixed, paraffin-embedded tissue after heat-induced antigen retrieval. Antibody LS-B6390 concentration 5 ug/ml.

**Western Blot Image:**



Western blot of MAPK8 expression in transfected 293T cell line by MAPK8 monoclonal antibody, clone 2F3.

**Immunoprecipitation Image:**



Immunoprecipitation of MAPK8 transfected lysate using anti-MAPK8 monoclonal antibody and Protein A magnetic bead, immunoblotted with MAPK8 rabbit polyclonal antibody.

**Requested From:**

Japan

Laboratory Reagent For In Vitro Research Use Only

Not for resale without prior written consent from LifeSpan BioSciences, Inc.

Created on 9/24/2014

© 2014 LifeSpan BioSciences