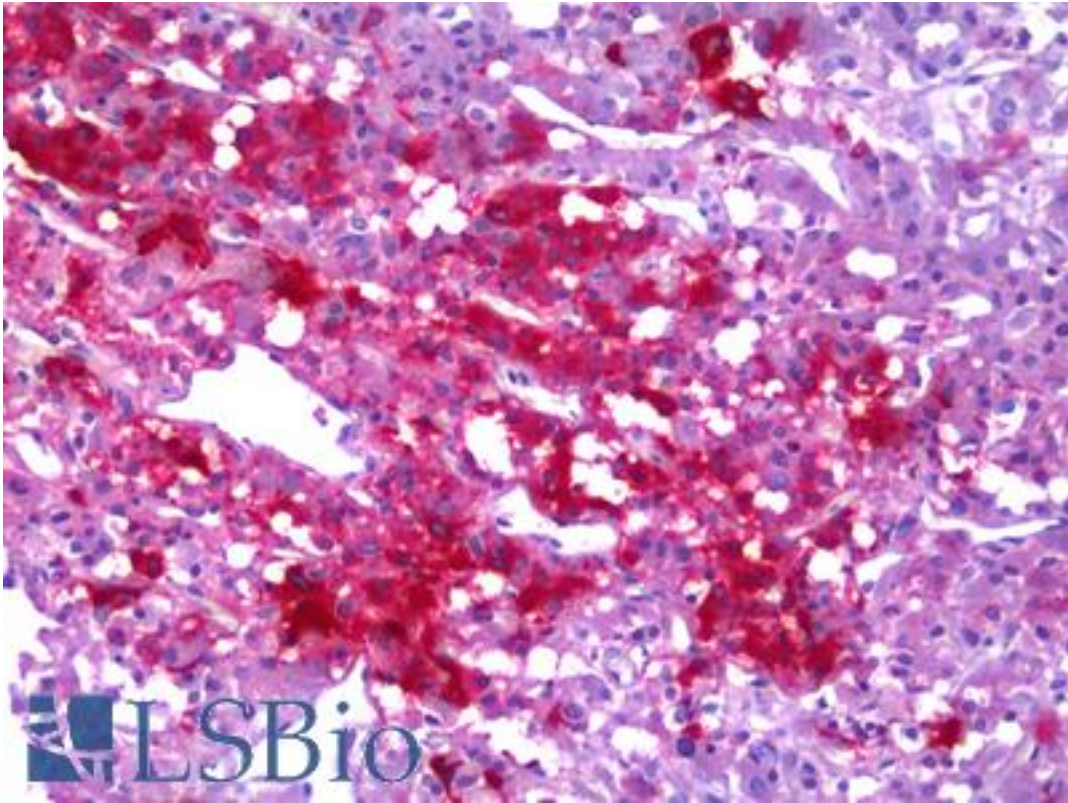


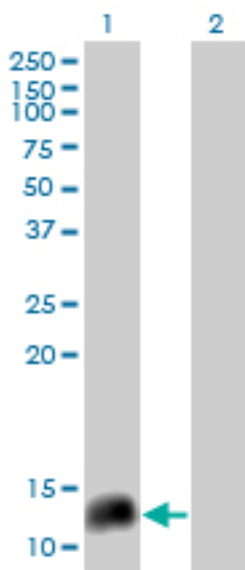
Neuropeptide Y / NPY Mouse anti-Human Monoclonal (2C10) Antibody - LS-B6388 - LSBio	
<b>CatalogID:</b>	LS-B6388
<b>Validation:</b>	This antibody replaces catalog number LS-C139091. It has been validated for use in the following assays: IHC-P.
<b>Target:</b>	neuropeptide Y (NPY)
<b>Synonyms:</b>	NPY Antibody, Pro-neuropeptide Y Antibody, Neuropeptide Y Antibody, PYY4 Antibody
<b>Family / Subfamily:</b>	Pancreatic hormone / not assigned-Pancreatic hormone
<b>Host</b>	NPY antibody was produced in Mouse
<b>Clonality:</b>	Monoclonal
<b>Isotype:</b>	IgG1,k
<b>Clone Name:</b>	2C10
<b>Immunogen Species:</b>	Neuropeptide Y / NPY antibody was raised against Human
<b>Immunogen:</b>	Neuropeptide Y / NPY antibody was raised against a recombinant protein encoding amino acids 29-97 of human NPY
<b>Specificity:</b>	Human NPY / Neuropeptide Y
<b>Reactivity:</b>	Human
<b>Purification:</b>	Protein A purified
<b>Presentation:</b>	PBS, pH 7.2. Sourced in Ascites.
<b>Recommended Storage:</b>	Short term 4°C, long term aliquot and store at -20°C, avoid freeze thaw cycles.
<b>Usage Summary:</b>	Sandwich ELISA: Recombinant protein. Western Blot: Transfected lysate, Recombinant protein.
<b>Uses:</b>	IHC - Paraffin (5 µg/ml), Western blot (1:500 - 1:1000), ELISA (Optimal dilution to be determined by the researcher)
<b>Size:</b>	50 µg
<b>Concentration:</b>	0.5 mg/ml

**Immunohistochemistry Image:**



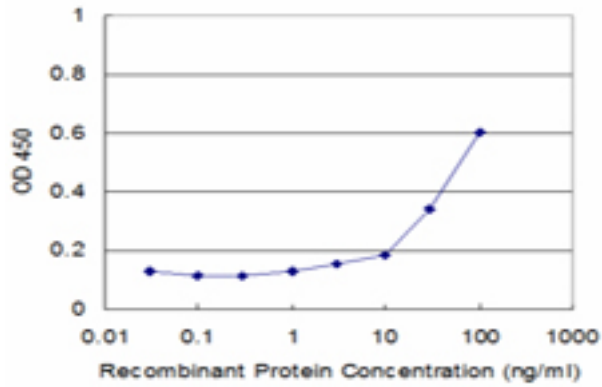
Anti-NPY / Neuropeptide Y antibody IHC of human adrenal medulla. Immunohistochemistry of formalin-fixed, paraffin-embedded tissue after heat-induced antigen retrieval. Antibody LS-B6388 concentration 5 ug/ml.

**Western Blot Image:**



Western blot of NPY expression in transfected 293T cell line by NPY monoclonal antibody, clone 2C10.

**ELISA Image:**



Detection limit for recombinant GST tagged NPY is approximately 3 ng/ml as a capture antibody.

**Requested From:**

Japan

Laboratory Reagent For In Vitro Research Use Only

Not for resale without prior written consent from LifeSpan BioSciences, Inc.

Created on 9/24/2014

© 2014 LifeSpan BioSciences