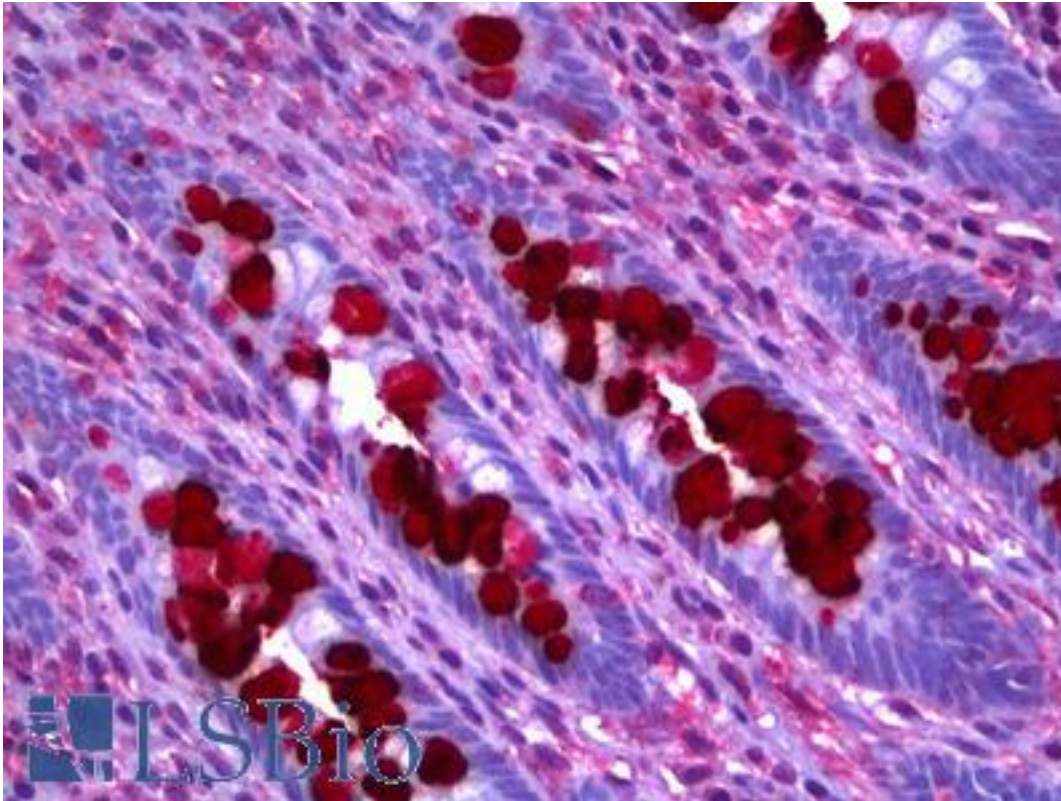


**GOB5 / CLCA1 Mouse anti-Human Monoclonal (1C4) Antibody - LS-B6384 - LSBio**

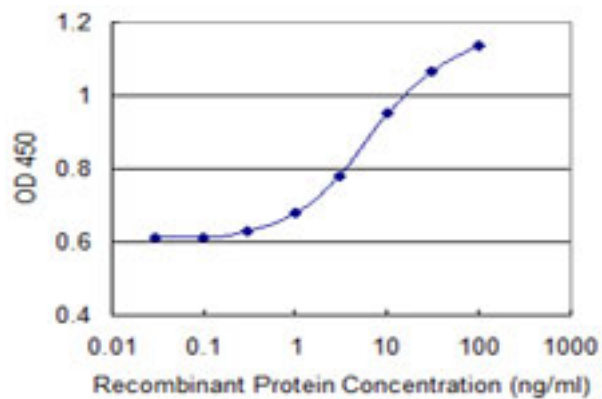
<b>CatalogID:</b>	LS-B6384
<b>Validation:</b>	This antibody replaces catalog number LS-C139083. It has been validated for use in the following assays: IHC-P.
<b>Target:</b>	chloride channel accessory 1 (CLCA1)
<b>Synonyms:</b>	CLCA1 Antibody, CaCC-1 Antibody, CLCRG1 Antibody, HCLCA1 Antibody, HCaCC-1 Antibody, GOB5 Antibody, CaCC Antibody, CACC1 Antibody, Chloride channel accessory 1 Antibody, Chloride channel regulator 1 Antibody
<b>Family / Subfamily:</b>	Ion Channel / Chloride channel - calcium-activated CLC
<b>Host</b>	CLCA1 antibody was produced in Mouse
<b>Clonality:</b>	Monoclonal
<b>Isotype:</b>	IgG2a,k
<b>Clone Name:</b>	1C4
<b>Immunogen Species:</b>	GOB5 / CLCA1 antibody was raised against Human
<b>Antigen Type:</b>	Recombinant protein
<b>Immunogen:</b>	GOB5 / CLCA1 antibody was raised against recombinant protein
<b>Specificity:</b>	Human CLCA1
<b>Reactivity:</b>	Human
<b>Purification:</b>	Protein A purified
<b>Presentation:</b>	PBS, pH 7.2. Sourced in Ascites.
<b>Recommended Storage:</b>	Short term 4°C, long term aliquot and store at -20°C, avoid freeze thaw cycles.
<b>Usage Summary:</b>	Sandwich ELISA: Recombinant protein. Western Blot: Recombinant protein.
<b>Uses:</b>	IHC - Paraffin (2.5 µg/ml), Western blot (1:500 - 1:1000), ELISA (Optimal dilution to be determined by the researcher)
<b>Size:</b>	50 µg
<b>Concentration:</b>	0.5 mg/ml

**Immunohistochemistry Image:**



Anti-CLCA1 antibody IHC of human colon, goblet cells. Immunohistochemistry of formalin-fixed, paraffin-embedded tissue after heat-induced antigen retrieval. Antibody LS-B6384 concentration 2.5 ug/ml.

**ELISA Image:**



Detection limit for recombinant GST tagged CLCA1 is 0.3 ng/ml as a capture antibody.

**Requested From:**

Japan

Laboratory Reagent For In Vitro Research Use Only

Not for resale without prior written consent from LifeSpan BioSciences, Inc.

Created on 9/24/2014

© 2014 LifeSpan BioSciences