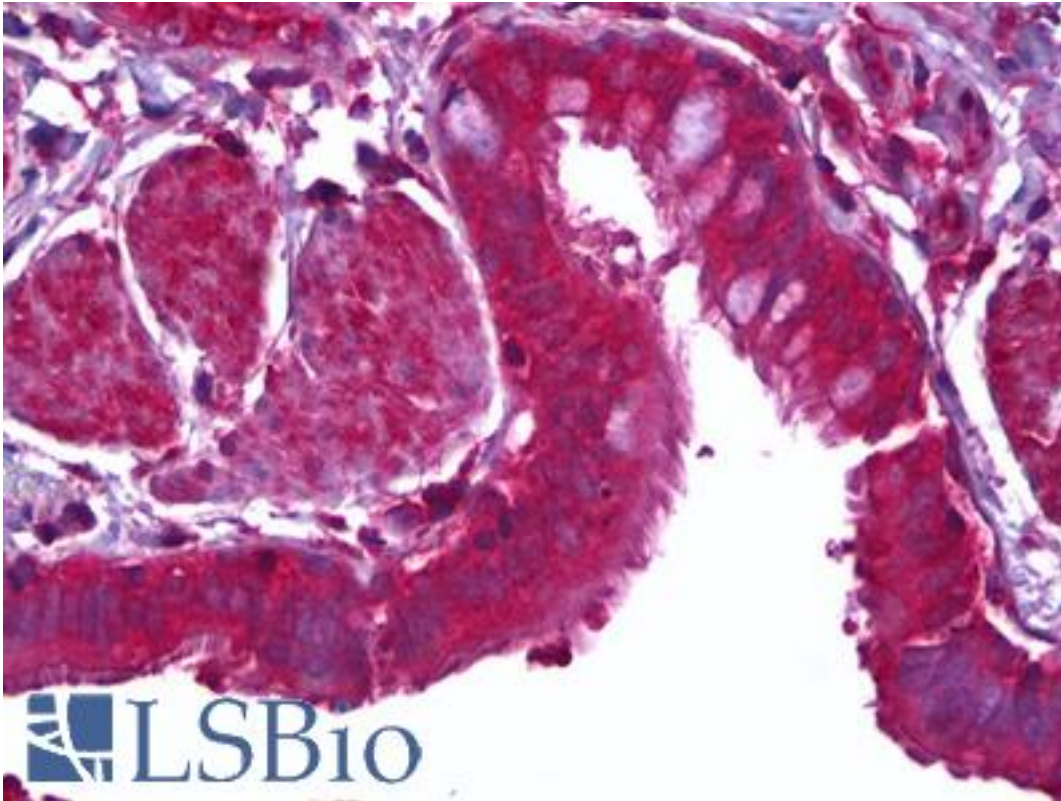


MFGE8 / MFG-E8 Mouse anti-Human Monoclonal (1E7) Antibody - LS-B6380 - LSBio

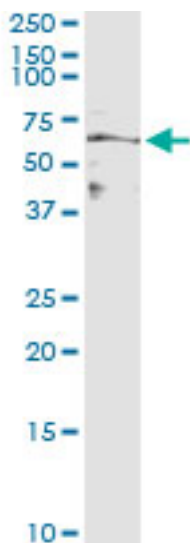
CatalogID:	LS-B6380
Validation:	This antibody replaces catalog number LS-C139053. It has been validated for use in the following assays: IHC-P.
Target:	milk fat globule-EGF factor 8 protein (MFGE8)
Synonyms:	MFGE8 Antibody, Breast epithelial antigen BA46 Antibody, EDIL1 Antibody, HP47 Antibody, Lactadherin Antibody, Medin Antibody, MFGM Antibody, Milk fat globule-EGF factor 8 Antibody, HsT19888 Antibody, OAcGD3S Antibody, SPAG10 Antibody, Sperm associated antigen 10 Antibody, MFG-E8 Antibody, SED1 Antibody, Sperm surface protein hP47 Antibody, BA46 Antibody, HMFG Antibody
Host	MFGE8 antibody was produced in Mouse
Clonality:	Monoclonal
Isotype:	IgG2a,k
Clone Name:	1E7
Immunogen Species:	MFGE8 / MFG-E8 antibody was raised against Human
Antigen Type:	Recombinant protein
Immunogen:	MFGE8 / MFG-E8 antibody was raised against recombinant protein
Specificity:	Human MFGE8 / MFG-E8
Reactivity:	Human
Purification:	Protein A purified
Presentation:	PBS, pH 7.4
Recommended Storage:	Short term 4°C, long term aliquot and store at -20°C, avoid freeze thaw cycles.
Usage Summary:	Sandwich ELISA: Recombinant protein. Western Blot: Recombinant protein.
Uses:	IHC - Paraffin (5 µg/ml), Western blot, Immunoprecipitation, ELISA (Optimal dilution to be determined by the researcher)
Size:	50 µg
Concentration:	0.47 mg/ml

Immunohistochemistry Image:



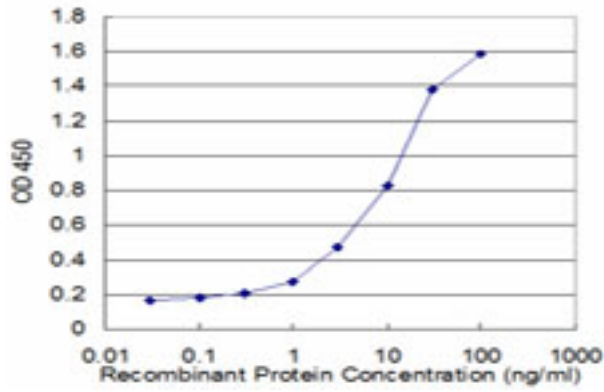
Anti-MFGE8 / MFG-E8 antibody IHC of human lung, epithelium. Immunohistochemistry of formalin-fixed, paraffin-embedded tissue after heat-induced antigen retrieval. Antibody LS-B6380 concentration 5 ug/ml.

Immunoprecipitation Image:



Immunoprecipitation of MFGE8 transfected lysate using anti-MFGE8 monoclonal antibody and Protein A magnetic bead, immunoblotted with MFGE8 rabbit polyclonal antibody.

ELISA Image:



Detection limit for recombinant GST tagged MFGE8 is approximately 0.3 ng/ml as a capture antibody.

Requested From:

Japan

Laboratory Reagent For In Vitro Research Use Only

Not for resale without prior written consent from LifeSpan BioSciences, Inc.

Created on 9/24/2014

© 2014 LifeSpan BioSciences