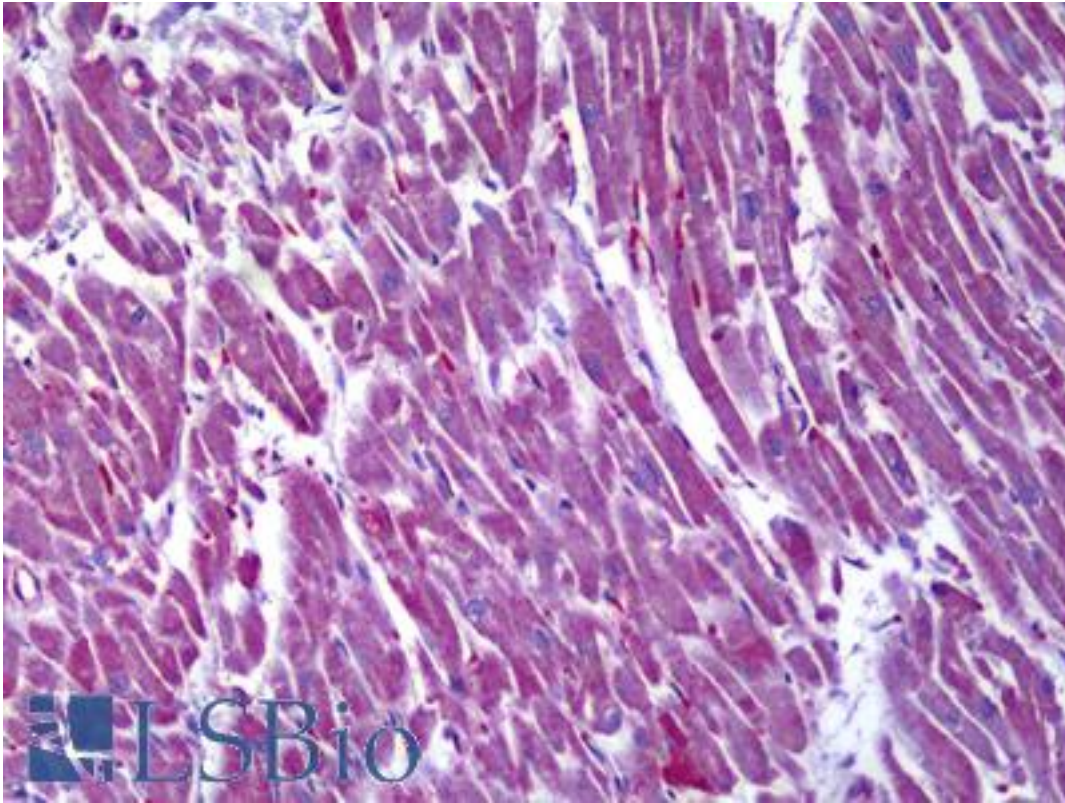


MDH / MDH2 Mouse anti-Human Monoclonal (1G12) Antibody - LS-B6378 - LSBio

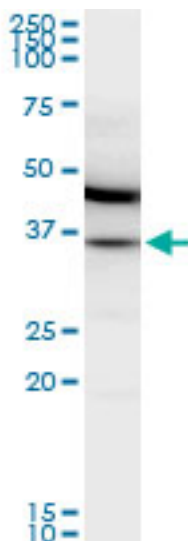
<b>CatalogID:</b>	LS-B6378
<b>Validation:</b>	This antibody replaces catalog number LS-C139050. It has been validated for use in the following assays: IHC-P.
<b>Target:</b>	malate dehydrogenase 2, NAD (mitochondrial) (MDH2)
<b>Synonyms:</b>	MDH2 Antibody, MDH Antibody, M-MDH Antibody, MGC:3559 Antibody, MOR1 Antibody
<b>Host</b>	MDH2 antibody was produced in Mouse
<b>Clonality:</b>	Monoclonal
<b>Isotype:</b>	IgG2a,k
<b>Clone Name:</b>	1G12
<b>Immunogen Species:</b>	MDH / MDH2 antibody was raised against Human
<b>Antigen Type:</b>	Recombinant protein
<b>Immunogen:</b>	MDH / MDH2 antibody was raised against recombinant protein
<b>Specificity:</b>	Human MDH2
<b>Reactivity:</b>	Human
<b>Purification:</b>	Protein A purified
<b>Presentation:</b>	PBS, pH 7.4. Sourced in Ascites.
<b>Recommended Storage:</b>	Short term 4°C, long term aliquot and store at -20°C, avoid freeze thaw cycles.
<b>Usage Summary:</b>	Sandwich ELISA: Recombinant protein. Western Blot: Cell lysate, Recombinant protein.
<b>Uses:</b>	IHC - Paraffin (10 µg/ml), Western blot (1:500 - 1:1000), ELISA (Optimal dilution to be determined by the researcher)
<b>Size:</b>	50 µg
<b>Concentration:</b>	0.5 mg/ml

**Immunohistochemistry Image:**



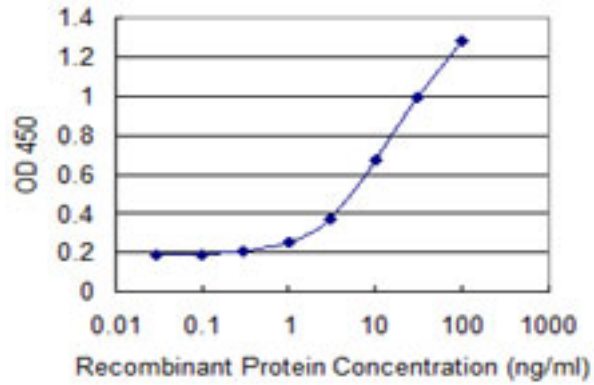
Anti-MDH2 antibody IHC of human heart. Immunohistochemistry of formalin-fixed, paraffin-embedded tissue after heat-induced antigen retrieval. Antibody LS-B6378 concentration 10 ug/ml.

**Western Blot Image:**



MDH2 monoclonal antibody, clone 1G12. Western blot of MDH2 expression in IMR-32.

**ELISA Image:**



Detection limit for recombinant GST tagged MDH2 is 0.3 ng/ml as a capture antibody.

**Requested From:**

Japan

Laboratory Reagent For In Vitro Research Use Only

Not for resale without prior written consent from LifeSpan BioSciences, Inc.

Created on 9/24/2014

© 2014 LifeSpan BioSciences