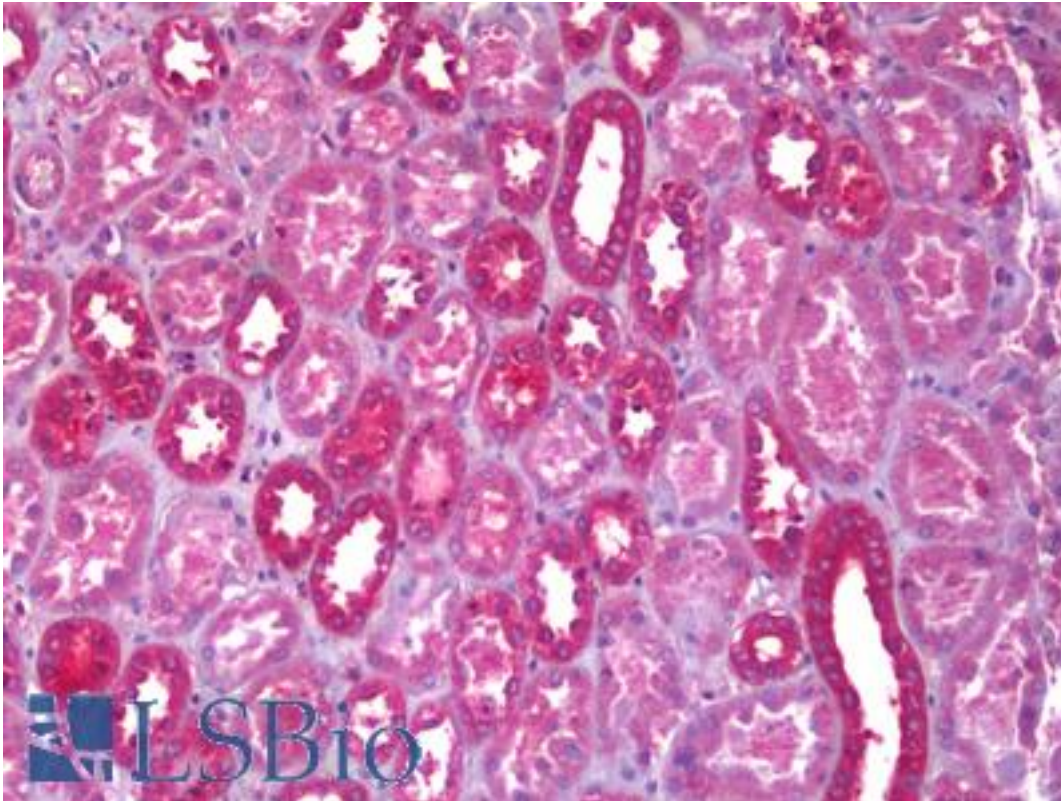


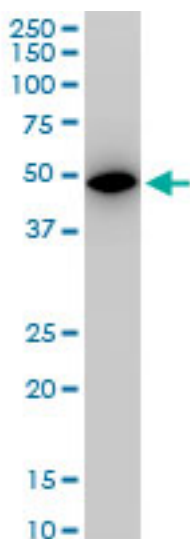
ALDOA / Aldolase Mouse anti-Human Monoclonal (2E6) Antibody - LS-B6377 - LSBio	
CatalogID:	LS-B6377
Validation:	This antibody replaces catalog number LS-C139048. It has been validated for use in the following assays: IHC-P.
Target:	aldolase A, fructose-bisphosphate (ALDOA)
Synonyms:	ALDOA Antibody, ALDA Antibody, Aldolase Antibody, GSD12 Antibody, Muscle-type aldolase Antibody, Lung cancer antigen NY-LU-1 Antibody
Host	ALDOA antibody was produced in Mouse
Clonality:	Monoclonal
Isotype:	IgG2a,k
Clone Name:	2E6
Immunogen Species:	ALDOA / Aldolase antibody was raised against Human
Antigen Type:	Recombinant protein
Immunogen:	ALDOA / Aldolase antibody was raised against recombinant protein
Specificity:	Human ALDOA / Aldolase
Reactivity:	Human, Mouse
Purification:	Protein A purified
Presentation:	PBS, pH 7.2. Sourced in Ascites.
Recommended Storage:	Store at -20°C or lower. Aliquot to avoid repeated freezing and thawing.
Usage Summary:	Western Blot: Cell lysate, Cell lysate, Recombinant protein.
Uses:	IHC - Paraffin (5 µg/ml), Western blot (1:500 - 1:1000), ELISA (Optimal dilution to be determined by the researcher)
Size:	50 µg
Concentration:	0.5 mg/ml

Immunohistochemistry Image:



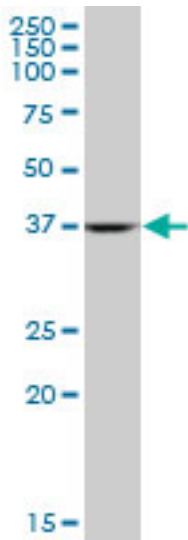
Anti-Aldolase antibody IHC of human kidney, tubules. Immunohistochemistry of formalin-fixed, paraffin-embedded tissue after heat-induced antigen retrieval. Antibody LS-B6377 concentration 5 ug/ml.

Western Blot Image:



ALDOA monoclonal antibody, clone 2E6. Western blot of ALDOA expression in NIH/3T3.

Western Blot Image:



ALDOA monoclonal antibody, clone 2E6. Western blot of ALDOA expression in HepG2.

Requested From:

Japan

Laboratory Reagent For In Vitro Research Use Only

Not for resale without prior written consent from LifeSpan BioSciences, Inc.

Created on 9/24/2014

© 2014 LifeSpan BioSciences