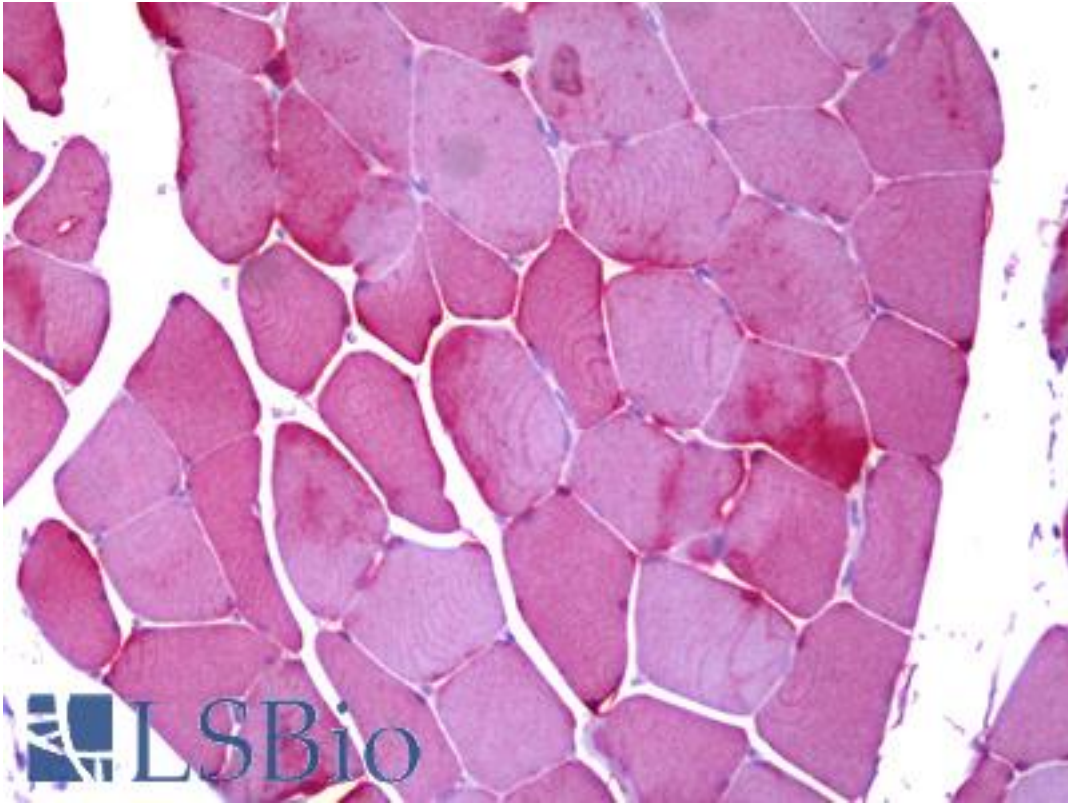


PYGM Mouse anti-Human Monoclonal (2C4) Antibody - LS-B6376 - LSBio

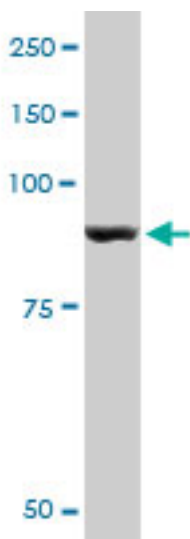
CatalogID:	LS-B6376
Validation:	This antibody replaces catalog number LS-C139046. It has been validated for use in the following assays: IHC-P.
Target:	phosphorylase, glycogen, muscle (PYGM)
Synonyms:	PYGM Antibody, GPMM Antibody, Myophosphorylase Antibody, Phosphorylase, glycogen muscle Antibody
Host	PYGM antibody was produced in Mouse
Clonality:	Monoclonal
Isotype:	IgG1,k
Clone Name:	2C4
Immunogen Species:	PYGM antibody was raised against Human
Antigen Type:	Recombinant protein
Immunogen:	PYGM antibody was raised against recombinant protein
Specificity:	Human PYGM
Reactivity:	Human, Mouse, Rat
Purification:	Protein A purified
Presentation:	PBS, pH 7.4.
Recommended Storage:	For long term, store at -20°C. Avoid repeat freeze-thaw cycles.
Usage Summary:	Sandwich ELISA: Recombinant protein. Western Blot: Cell lysate, Cell lysate, Cell lysate, Cell lysate, Recombinant protein.
Uses:	IHC - Paraffin (5 µg/ml), Western blot, ELISA (Optimal dilution to be determined by the researcher)
Size:	50 µg
Concentration:	0.4 mg/ml

Immunohistochemistry Image:



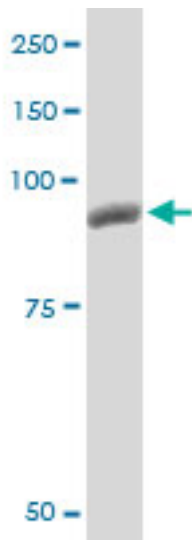
Anti-PYGM / Phosphorylase b antibody IHC of human skeletal muscle. Immunohistochemistry of formalin-fixed, paraffin-embedded tissue after heat-induced antigen retrieval. Antibody LS-B6376 concentration 5 ug/ml.

Western Blot Image:



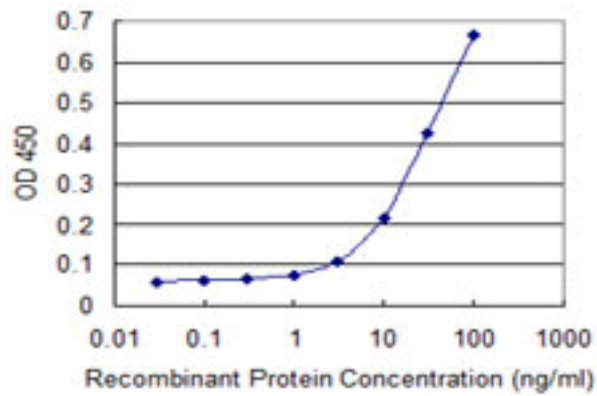
PYGM monoclonal antibody, clone 2C4. Western blot of PYGM expression in HepG2.

Western Blot Image:



PYGM monoclonal antibody, clone 2C4. Western blot of PYGM expression in PC-12.

ELISA Image:



Detection limit for recombinant GST tagged PYGM is 1 ng/ml as a capture antibody.

Requested From:

Japan

Laboratory Reagent For In Vitro Research Use Only

Not for resale without prior written consent from LifeSpan BioSciences, Inc.

Created on 9/24/2014

© 2014 LifeSpan BioSciences