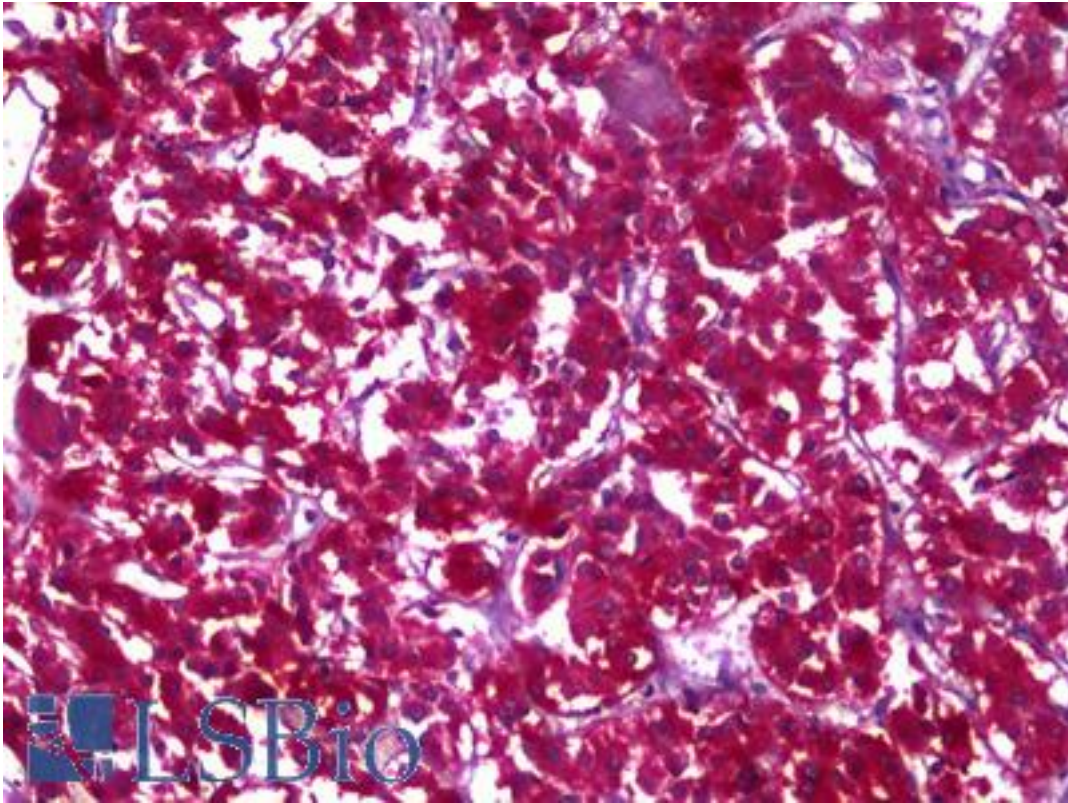


MDH1 Mouse anti-Human Monoclonal (1D2) Antibody - LS-B6375 - LSBio

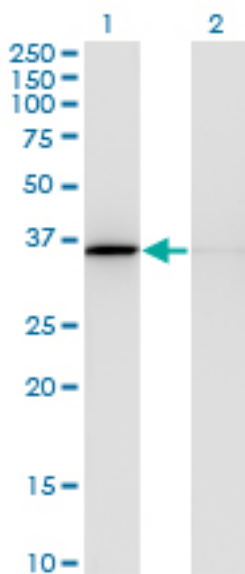
CatalogID:	LS-B6375
Validation:	This antibody replaces catalog number LS-C139044. It has been validated for use in the following assays: IHC-P.
Target:	malate dehydrogenase 1, NAD (soluble) (MDH1)
Synonyms:	MDH1 Antibody, Cytosolic malate dehydrogenase Antibody, Diiodophenylpyruvate reductase Antibody, MOR2 Antibody, MDH-s Antibody, MDHA Antibody, MGC:1375 Antibody, Soluble malate dehydrogenase Antibody
Host	MDH1 antibody was produced in Mouse
Clonality:	Monoclonal
Isotype:	IgG2a,k
Clone Name:	1D2
Immunogen Species:	MDH1 antibody was raised against Human
Antigen Type:	Recombinant protein
Immunogen:	MDH1 antibody was raised against recombinant protein encoding amino acids 101 to 193 of human MDH1.
Specificity:	Human MDH1
Reactivity:	Human
Purification:	Protein A purified
Presentation:	PBS, pH 7.4. Sourced in Ascites.
Recommended Storage:	Short term 4°C, long term aliquot and store at -20°C, avoid freeze thaw cycles.
Usage Summary:	Western Blot: Transfected lysate, Recombinant protein.
Uses:	IHC - Paraffin (5 µg/ml), Western blot (1:500 - 1:1000), ELISA (Optimal dilution to be determined by the researcher)
Size:	50 µg
Concentration:	0.5 mg/ml

Immunohistochemistry Image:



Anti-MDH1 antibody IHC of human adrenal. Immunohistochemistry of formalin-fixed, paraffin-embedded tissue after heat-induced antigen retrieval. Antibody LS-B6375 concentration 5 ug/ml.

Western Blot Image:



Western blot of MDH1 expression in transfected 293T cell line by MDH1 monoclonal antibody, clone 1D2.

Requested From:

Japan

Laboratory Reagent For In Vitro Research Use Only

Not for resale without prior written consent from LifeSpan BioSciences, Inc.

Created on 9/24/2014

© 2014 LifeSpan BioSciences