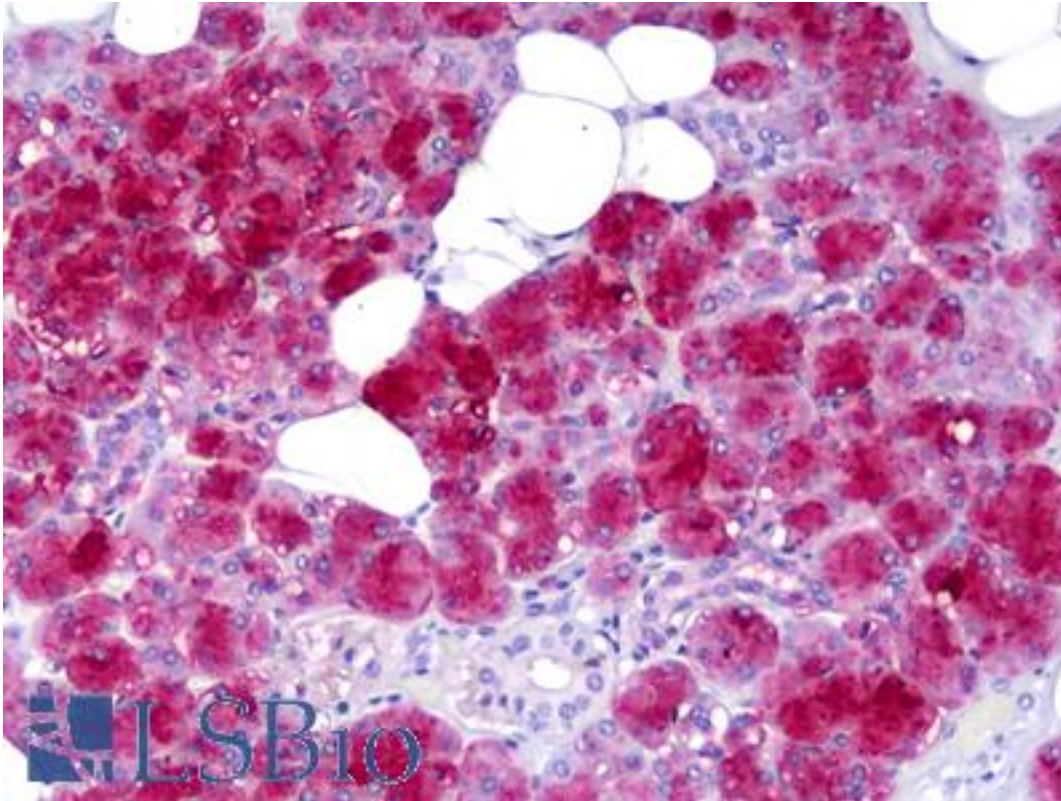


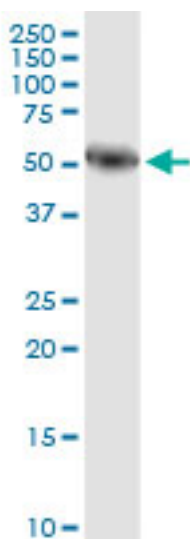
AMY1A / Salivary Amylase Mouse anti-Human Monoclonal (2D4) Antibody - LS-B6374 - LSBio	
CatalogID:	LS-B6374
Validation:	This antibody replaces catalog number LS-C133046. It has been validated for use in the following assays: IHC-P.
Target:	amylase, alpha 1A (salivary) (AMY1A)
Synonyms:	AMY1A Antibody, Alpha-amylase 1 Antibody, Glycogenase Antibody, AMY1 Antibody, Amylase, alpha 1A (salivary) Antibody, Amylase, alpha 1A salivary Antibody, Amylase, salivary, alpha-1A Antibody, Salivary amylase alpha 1A Antibody, Salivary alpha-amylase Antibody, Salivary Amylase Antibody
Host	AMY1A antibody was produced in Mouse
Clonality:	Monoclonal
Isotype:	IgG2a,k
Clone Name:	2D4
Immunogen Species:	AMY1A / Salivary Amylase antibody was raised against Human
Immunogen:	AMY1A / Salivary Amylase antibody was raised against aMY1A (NP_001008222, 172 a.a. ~ 246 a.a) partial recombinant protein with GST tag. MW of the GST tag alone is 26 KDa.
Specificity:	Human AMY1A
Reactivity:	Human
Purification:	Protein A purified
Presentation:	PBS, pH 7.4. Sourced in Ascites.
Recommended Storage:	Aliquot and freeze at -20° C. Avoid freeze-thaw cycles.
Usage Summary:	Immunohistochemistry: Formalin-fixed paraffin-embedded sections. Western Blot: Tissue lysate, Recombinant protein.
Uses:	IHC - Paraffin (5 µg/ml), Western blot (1:500 - 1:1000), ELISA (Optimal dilution to be determined by the researcher)
Size:	50 µg
Concentration:	0.5 mg/ml

Immunohistochemistry Image:



Anti-AMY1A / Salivary Amylase antibody IHC of human salivary gland. Immunohistochemistry of formalin-fixed, paraffin-embedded tissue after heat-induced antigen retrieval. Antibody LS-B6374 concentration 5 ug/ml.

Western Blot Image:



AMY1A monoclonal antibody, clone 2D4. Western blot of AMY1A expression in human pancreas.

Requested From:

Japan

Laboratory Reagent For In Vitro Research Use Only

Not for resale without prior written consent from LifeSpan BioSciences, Inc.

Created on 9/24/2014

© 2014 LifeSpan BioSciences