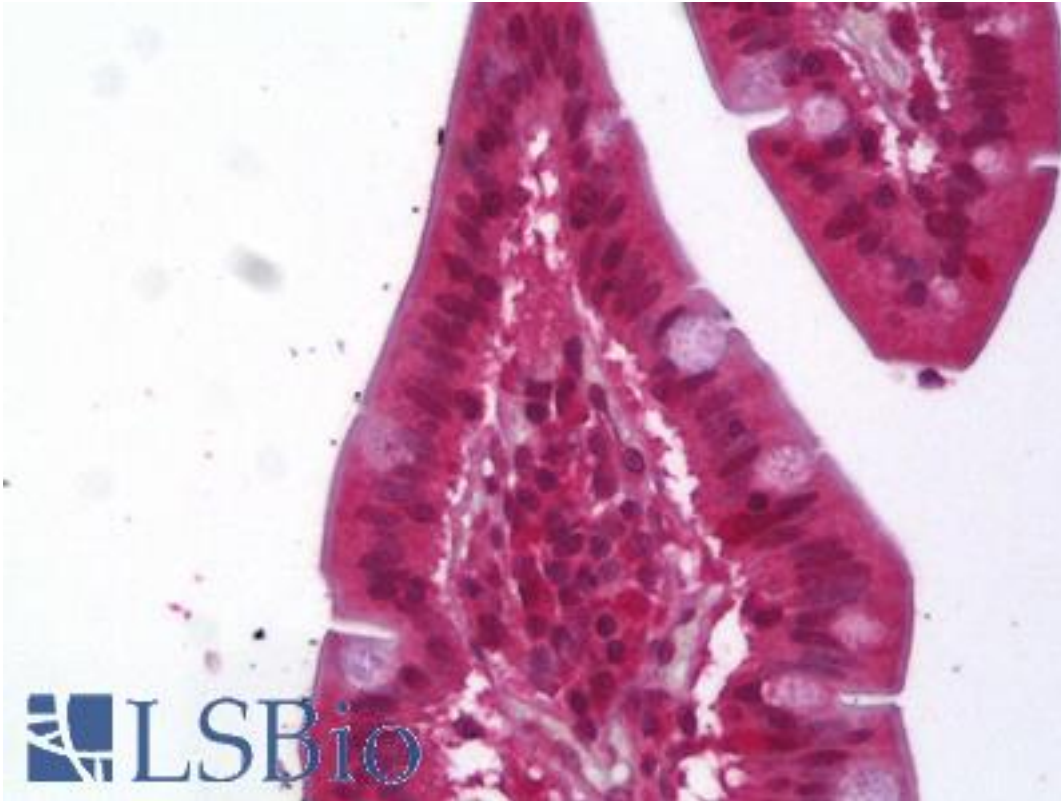


ACAT1 Rabbit anti-Human Polyclonal Antibody - LS-B6372 - LSBio

CatalogID:	LS-B6372
Validation:	This antibody replaces catalog number LS-C137441. It has been validated for use in the following assays: IHC-P.
Target:	acetyl-CoA acetyltransferase 1 (ACAT1)
Synonyms:	ACAT1 Antibody, ACAT Antibody, Acetoacetyl-CoA thiolase Antibody, Acetyl-CoA acetyltransferase 1 Antibody, MAT Antibody, T2 Antibody, THIL Antibody
Host	ACAT1 antibody was produced in Rabbit
Clonality:	Polyclonal
Isotype:	IgG
Immunogen Species:	ACAT1 antibody was raised against Human
Antigen Type:	Synthetic peptide
Immunogen:	ACAT1 antibody was raised against synthetic peptide
Specificity:	This Polyclonal antibody is directed against human ACAT1 protein. The product was purified from serum by protein A chromatography. Cross-reactivity with ACAT1 from other sources has not been determined.
Reactivity:	Human, Mouse, Rat, Pig
Purification:	Affinity purified
Presentation:	PBS, pH 7.4, 0.02% sodium azide
Recommended Storage:	Short term 4°C, long term aliquot and store at -20°C, avoid freeze thaw cycles.
Uses:	IHC - Paraffin (2.5 µg/ml), Western blot (1:1000 - 1:4000) (Optimal dilution to be determined by the researcher)
Size:	50 µl
Concentration:	1 mg/ml

Immunohistochemistry Image:



Anti-ACAT1 antibody IHC of human small intestine. Immunohistochemistry of formalin-fixed, paraffin-embedded tissue after heat-induced antigen retrieval. Antibody LS-B6372 concentration 2.5 ug/ml.

Requested From:

Japan

Laboratory Reagent For In Vitro Research Use Only

Not for resale without prior written consent from LifeSpan BioSciences, Inc.

Created on 9/24/2014

© 2014 LifeSpan BioSciences