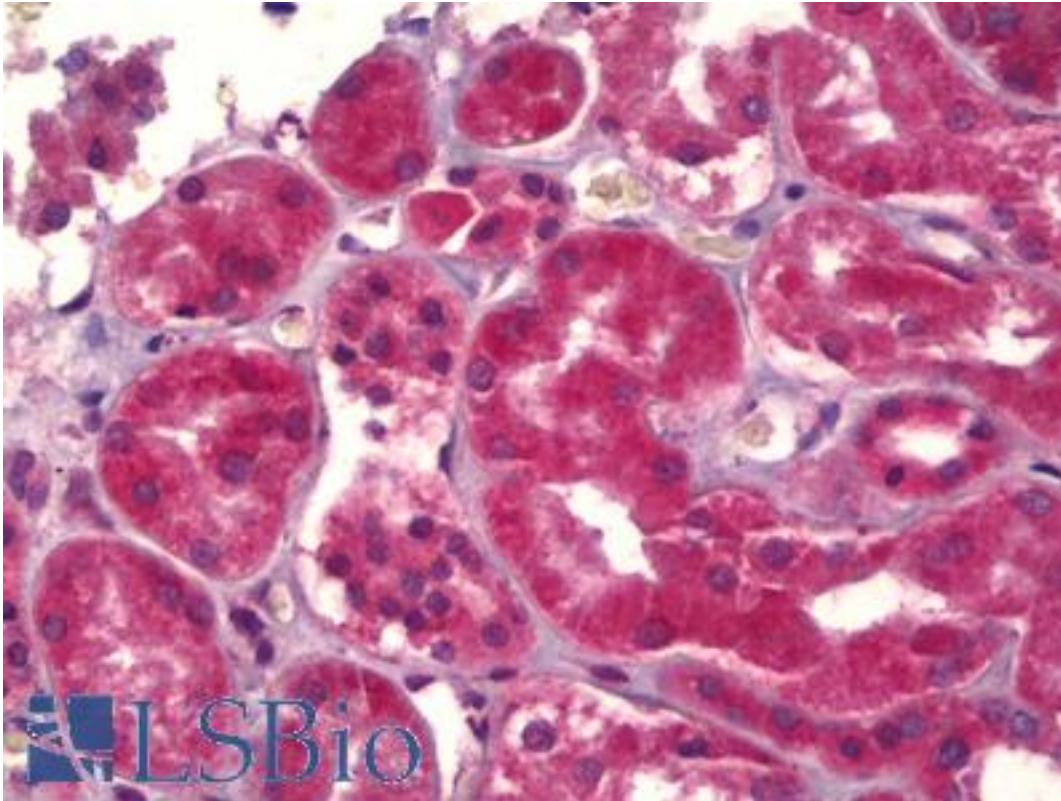


ABCB5 Rabbit anti-Human Polyclonal Antibody - LS-B6371 - LSBio

CatalogID:	LS-B6371
Validation:	This antibody replaces catalog number LS-C137421. It has been validated for use in the following assays: IHC-P.
Target:	ATP-binding cassette, sub-family B (MDR/TAP), member 5 (ABCB5)
Synonyms:	ABCB5 Antibody, ABCB5alpha Antibody, ABCB5 P-gp Antibody, ABCB5beta Antibody, ATP-binding cassette protein Antibody, EST422562 Antibody, P-glycoprotein ABCB5 Antibody
Family / Subfamily:	Transporter / ATP-binding cassette - ABCB/MDR
Host	ABCB5 antibody was produced in Rabbit
Clonality:	Polyclonal
Isotype:	IgG
Immunogen Species:	ABCB5 antibody was raised against Human
Antigen Type:	Synthetic peptide
Immunogen:	ABCB5 antibody was raised against synthetic peptide
Specificity:	This Polyclonal antibody is directed against human ABCB5 protein. The product was purified from serum by protein A chromatography. Expect reactivity with human ABCB5. Cross-reactivity with ABCB5 from other sources has not been determined.
Reactivity:	Human
Purification:	Affinity purified
Presentation:	PBS, pH 7.4, 0.02% sodium azide
Recommended Storage:	Short term 4°C, long term aliquot and store at -20°C, avoid freeze thaw cycles.
Uses:	IHC - Paraffin (2.5 µg/ml), Western blot (1:1000 - 1:4000) (Optimal dilution to be determined by the researcher)
Size:	50 µl
Concentration:	1 mg/ml

Immunohistochemistry Image:



Anti-ABCB5 antibody IHC of human kidney. Immunohistochemistry of formalin-fixed, paraffin-embedded tissue after heat-induced antigen retrieval. Antibody LS-B6371 concentration 2.5 ug/ml.

Requested From:

Japan

Laboratory Reagent For In Vitro Research Use Only

Not for resale without prior written consent from LifeSpan BioSciences, Inc.

Created on 9/24/2014

© 2014 LifeSpan BioSciences