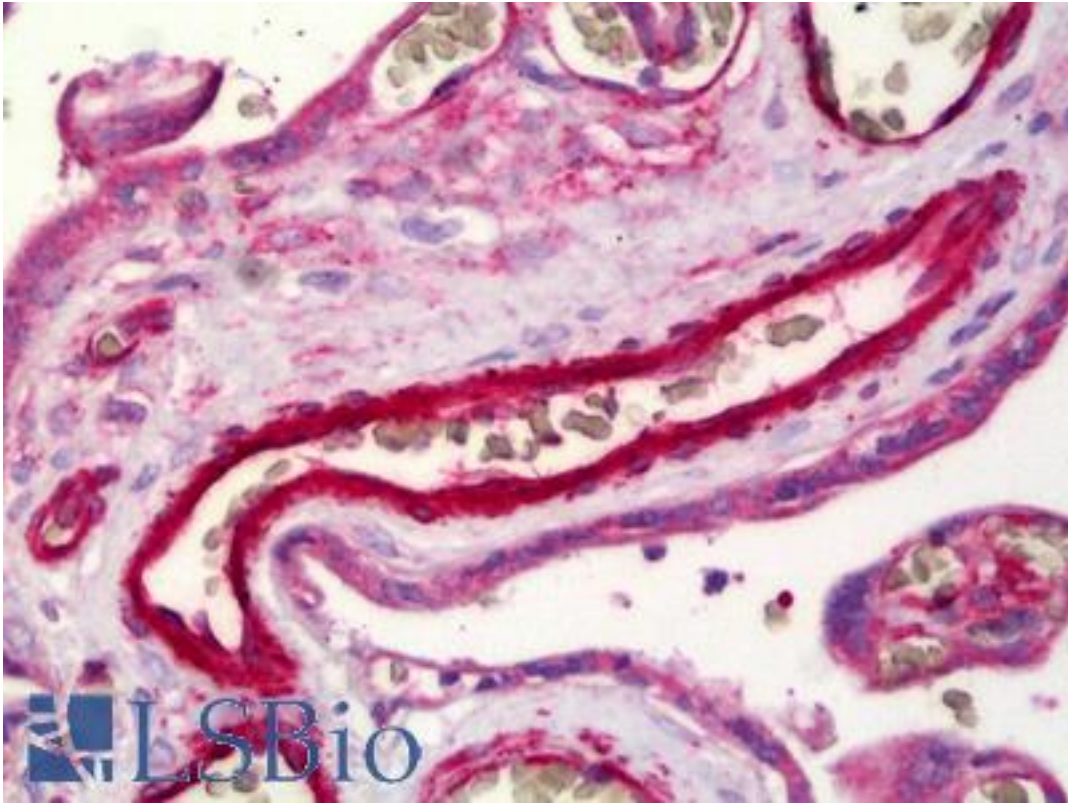


**S1PR1 / EDG1 / S1P1 Rabbit anti-Human Polyclonal Antibody - LS-B6370 - LSBio**

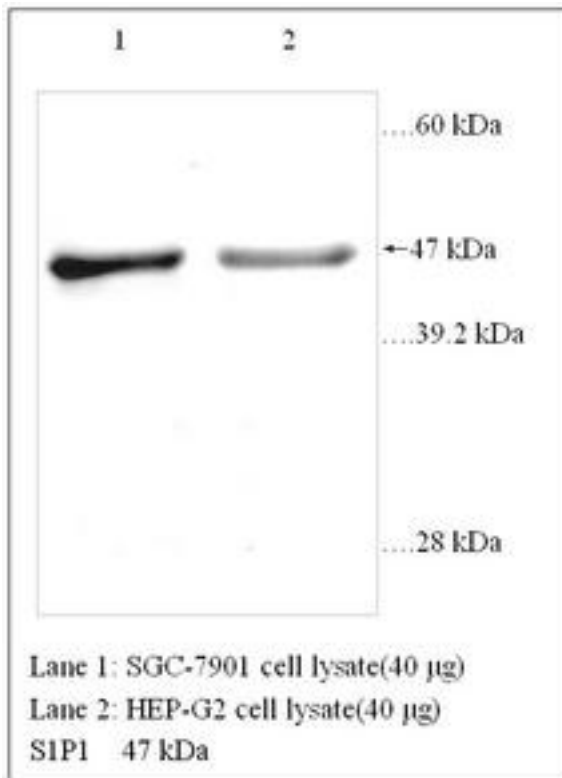
<b>CatalogID:</b>	LS-B6370
<b>Validation:</b>	This antibody replaces catalog number LS-C137385. It has been validated for use in the following assays: IHC-P.
<b>Target:</b>	sphingosine-1-phosphate receptor 1 (S1PR1)
<b>Synonyms:</b>	S1PR1 Antibody, CD363 Antibody, CD363 antigen Antibody, CHEDG1 Antibody, ECGF1 Antibody, EDG-1 Antibody, D1S3362 Antibody, EDG1 Antibody, S1P1 Antibody, S1P receptor Edg-1 Antibody, S1P receptor 1 Antibody
<b>Family / Subfamily:</b>	GPCR / Lysophospholipid/Lysosphingolipid
<b>Host</b>	S1PR1 antibody was produced in Rabbit
<b>Clonality:</b>	Polyclonal
<b>Isotype:</b>	IgG
<b>Immunogen Species:</b>	S1PR1 / EDG1 / S1P1 antibody was raised against Human
<b>Antigen Type:</b>	Synthetic peptide
<b>Immunogen:</b>	S1PR1 / EDG1 / S1P1 antibody was raised against synthetic peptide
<b>Specificity:</b>	The S1P1 antibody is directed against a cytoplasmic loop of this receptor.
<b>Reactivity:</b>	Human, Mouse, Rat, Pig
<b>Purification:</b>	Affinity purified
<b>Presentation:</b>	PBS, pH 7.4, 0.02% sodium azide
<b>Recommended Storage:</b>	Short term 4°C, long term aliquot and store at -20°C, avoid freeze thaw cycles.
<b>Uses:</b>	IHC - Paraffin (2.5 µg/ml), Western blot (1:2000) (Optimal dilution to be determined by the researcher)
<b>Size:</b>	50 µl
<b>Concentration:</b>	1 mg/ml

**Immunohistochemistry Image:**



Anti-S1PR1 / EDG1 antibody IHC of human placenta, endothelium. Immunohistochemistry of formalin-fixed, paraffin-embedded tissue after heat-induced antigen retrieval. Antibody LS-B6370 concentration 2.5 ug/ml.

**Western Blot Image:**



**Requested From:**

Japan

Laboratory Reagent For In Vitro Research Use Only

Not for resale without prior written consent from LifeSpan BioSciences, Inc.

Created on 9/24/2014

© 2014 LifeSpan BioSciences