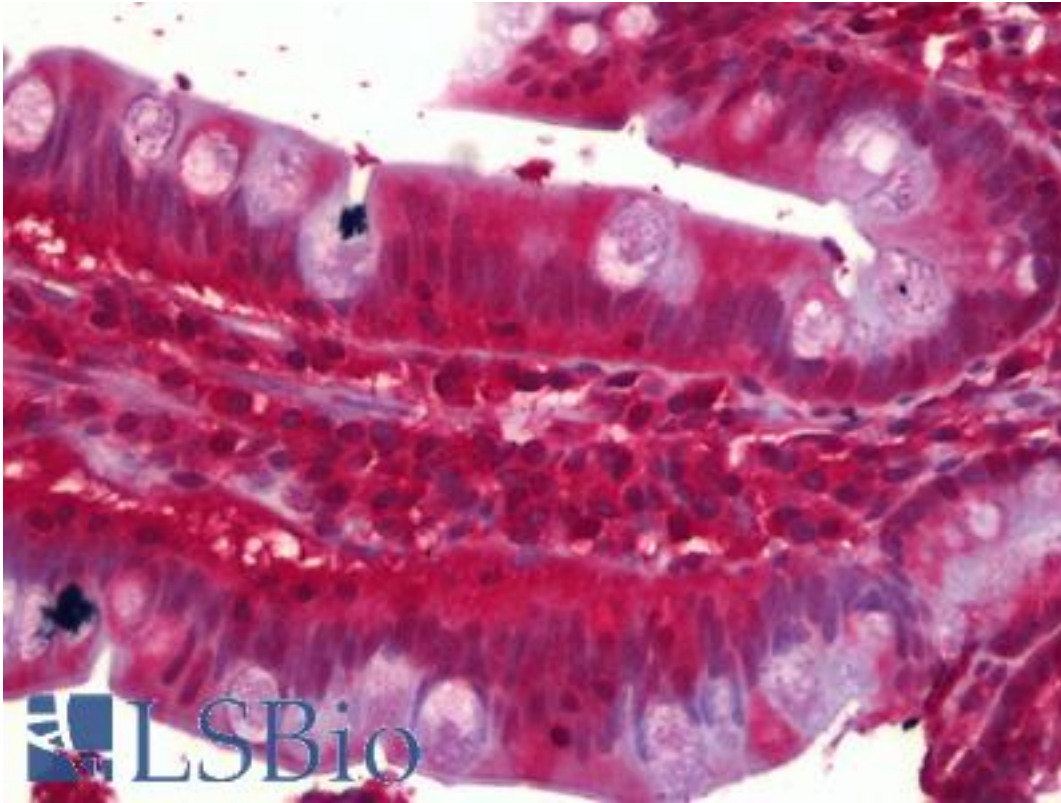


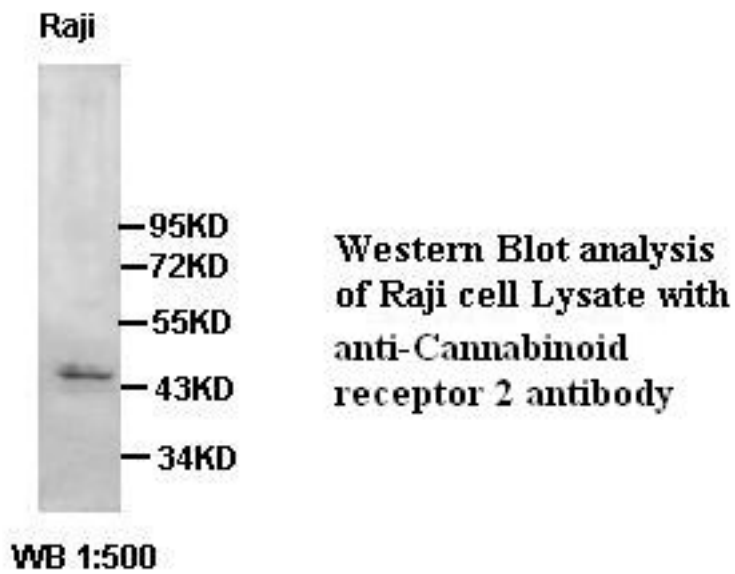
CNR2 / CB2 Rabbit anti-Human Polyclonal Antibody - LS-B6368 - LSBio	
CatalogID:	LS-B6368
Validation:	This antibody replaces catalog number LS-C137259. It has been validated for use in the following assays: IHC-P.
Target:	cannabinoid receptor 2 (macrophage) (CNR2)
Synonyms:	CNR2 Antibody, Cannabinoid receptor 2 Antibody, CB2 Antibody, CB2 cannabinoid receptor Antibody, CX5 Antibody, CB2R Antibody, HCB2 Antibody, Cannabinoid CB2 receptor Antibody, CB-2 Antibody, CB2 receptor Antibody
Family / Subfamily:	GPCR / Cannabinoid
Host	CNR2 antibody was produced in Rabbit
Clonality:	Polyclonal
Isotype:	IgG
Immunogen Species:	CNR2 / CB2 antibody was raised against Human
Antigen Type:	Recombinant protein
Immunogen:	CNR2 / CB2 antibody was raised against recombinant protein
Reactivity:	Human
Purification:	Affinity purified
Presentation:	PBS, pH 7.4, 0.02% sodium azide
Recommended Storage:	Short term 4°C, long term aliquot and store at -20°C, avoid freeze thaw cycles.
Uses:	IHC - Paraffin (2 µg/ml), Western blot (Optimal dilution to be determined by the researcher)
Size:	50 µl
Concentration:	1 mg/ml

Immunohistochemistry Image:



Anti-CNR2 / CB2 antibody IHC of human small intestine. Immunohistochemistry of formalin-fixed, paraffin-embedded tissue after heat-induced antigen retrieval. Antibody LS-B6368 concentration 2 ug/ml.

Western Blot Image:



Requested From:

Japan

Laboratory Reagent For In Vitro Research Use Only

Not for resale without prior written consent from LifeSpan BioSciences, Inc.

Created on 9/24/2014

© 2014 LifeSpan BioSciences