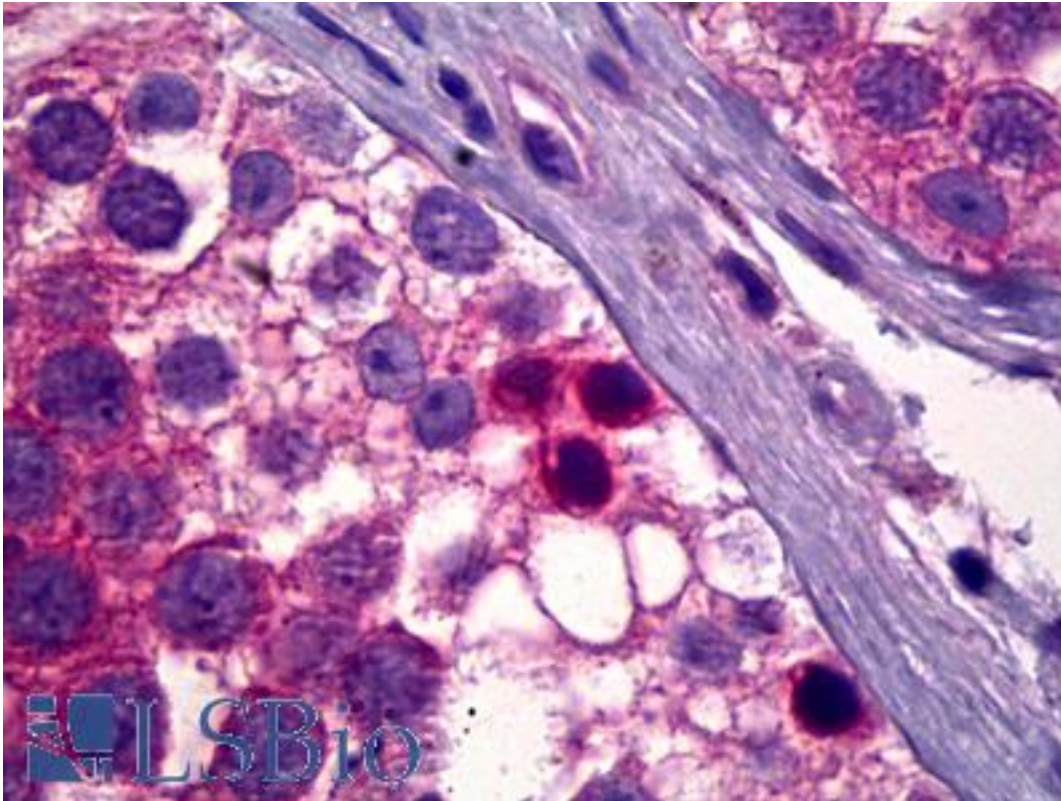


PDK1 / PDPK1 Rabbit anti-Human Polyclonal Antibody - LS-B6365 - LSBio

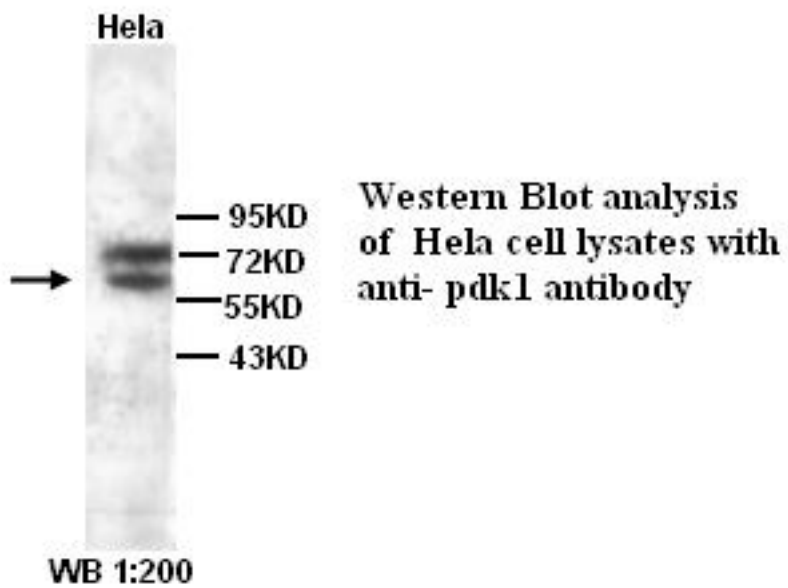
CatalogID:	LS-B6365
Validation:	This antibody replaces catalog number LS-C137010. It has been validated for use in the following assays: IHC-P.
Target:	3-phosphoinositide dependent protein kinase-1 (PDPK1)
Synonyms:	PDPK1 Antibody, HPDK1 Antibody, PkB kinase like gene 1 Antibody, PkB-like 1 Antibody, Pdk-1 Antibody, PkB kinase Antibody, PRO0461 Antibody
Family / Subfamily:	Protein Kinase / RAC/AKT
Host	PDPK1 antibody was produced in Rabbit
Clonality:	Polyclonal
Isotype:	IgG
Immunogen Species:	PDK1 / PDPK1 antibody was raised against Human
Antigen Type:	Synthetic peptide
Immunogen:	PDK1 / PDPK1 antibody was raised against synthetic peptide
Specificity:	PDK1 antibody detects endogenous levels of PDK1 protein. Not tested with other proteins.
Reactivity:	Human
Purification:	Purified
Presentation:	PBS, pH 7.4, 0.02% sodium azide
Recommended Storage:	Short term 4°C, long term aliquot and store at -20°C, avoid freeze thaw cycles.
Uses:	IHC - Paraffin (5 µg/ml), Western blot (1:200 - 1:500), ELISA (1:20000 - 1:80000) (Optimal dilution to be determined by the researcher)
Size:	50 µl
Concentration:	1 mg/ml

Immunohistochemistry Image:



Anti-PDK1 antibody IHC of human testis, spermatogonia. Immunohistochemistry of formalin-fixed, paraffin-embedded tissue after heat-induced antigen retrieval. Antibody LS-B6365 concentration 5 ug/ml.

Western Blot Image:



Requested From:

Japan

Laboratory Reagent For In Vitro Research Use Only

Not for resale without prior written consent from LifeSpan BioSciences, Inc.

Created on 9/24/2014

© 2014 LifeSpan BioSciences