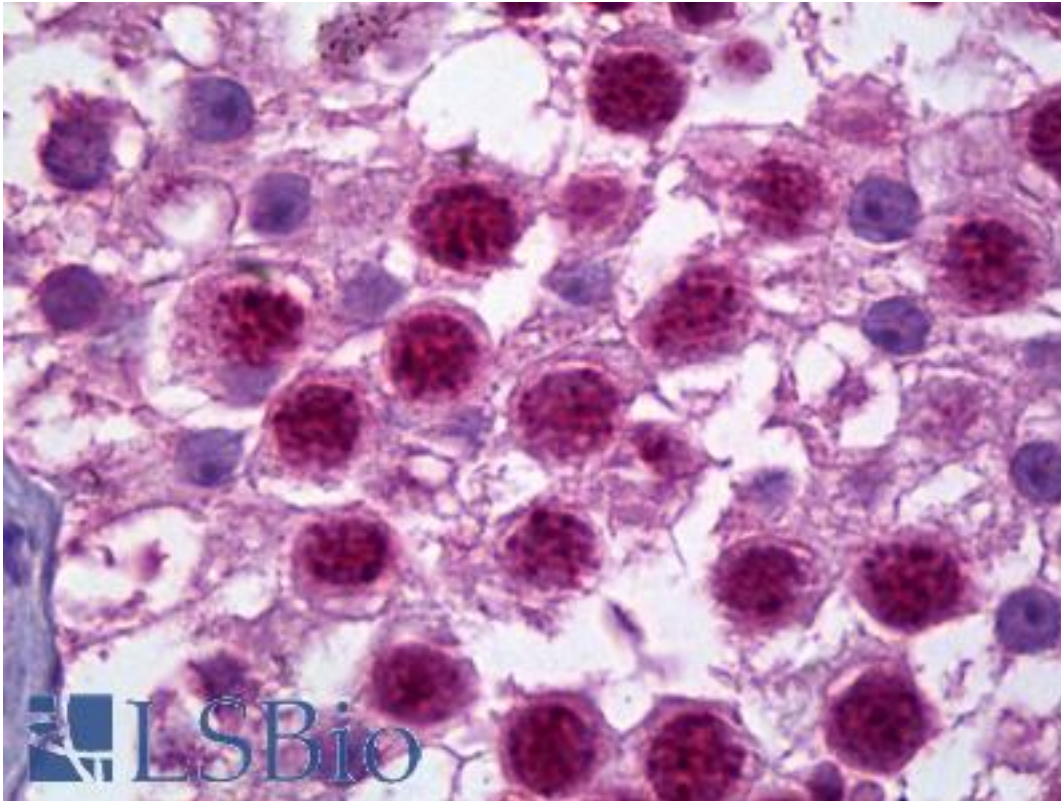


HES1 / HES-1 Rabbit anti-Human Polyclonal (N-Terminus) Antibody - LS-B6364 - LSBio

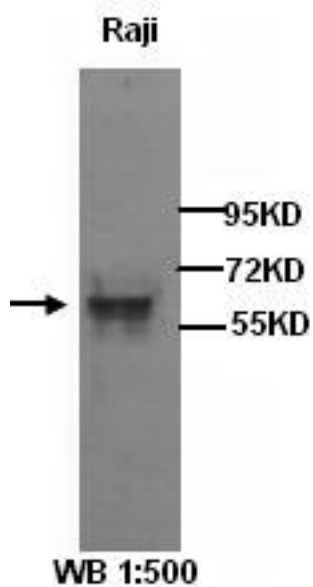
| | |
|-----------------------------|---|
| CatalogID: | LS-B6364 |
| Validation: | This antibody replaces catalog number LS-C136969. It has been validated for use in the following assays: IHC-P. |
| Target: | hes family bHLH transcription factor 1 (HES1) |
| Synonyms: | HES1 Antibody, BHLHb39 Antibody, HHL Antibody, HL Antibody, Hairy and enhancer of split 1 Antibody, Hairy homolog Antibody, HRY Antibody, Hairy homolog (Drosophila) Antibody, Transcription factor HES-1 Antibody, Hairy-like protein Antibody, HES-1 Antibody |
| Host | HES1 antibody was produced in Rabbit |
| Clonality: | Polyclonal |
| Isotype: | IgG |
| Immunogen Species: | HES1 / HES-1 antibody was raised against Human |
| Antigen Type: | Synthetic peptide |
| Immunogen: | HES1 / HES-1 antibody was raised against synthetic peptide |
| Epitope: | N-Terminus |
| Reactivity: | Human, Mouse, Rat |
| Purification: | Affinity purified |
| Presentation: | PBS (without Mg ²⁺ , Ca ²⁺), pH 7.4, 150 mM sodium chloride, 0.02% sodium azide, 50% glycerol |
| Recommended Storage: | Short term 4°C, long term aliquot and store at -20°C, avoid freeze thaw cycles. |
| Uses: | IHC - Paraffin (2.5 µg/ml), Western blot (1:200 - 1:1000), ELISA (1:80000) (Optimal dilution to be determined by the researcher) |
| Size: | 50 µl |
| Concentration: | 1 mg/ml |

Immunohistochemistry Image:



Anti-HES1 antibody IHC of human testis. Immunohistochemistry of formalin-fixed, paraffin-embedded tissue after heat-induced antigen retrieval. Antibody LS-B6364 concentration 2.5 ug/ml.

Western Blot Image:



Western Blot analysis of Raji cell lysates with anti-HES-1 antibody

Laboratory Reagent For In Vitro Research Use Only

Not for resale without prior written consent from LifeSpan BioSciences, Inc.

Created on 9/24/2014

© 2014 LifeSpan BioSciences