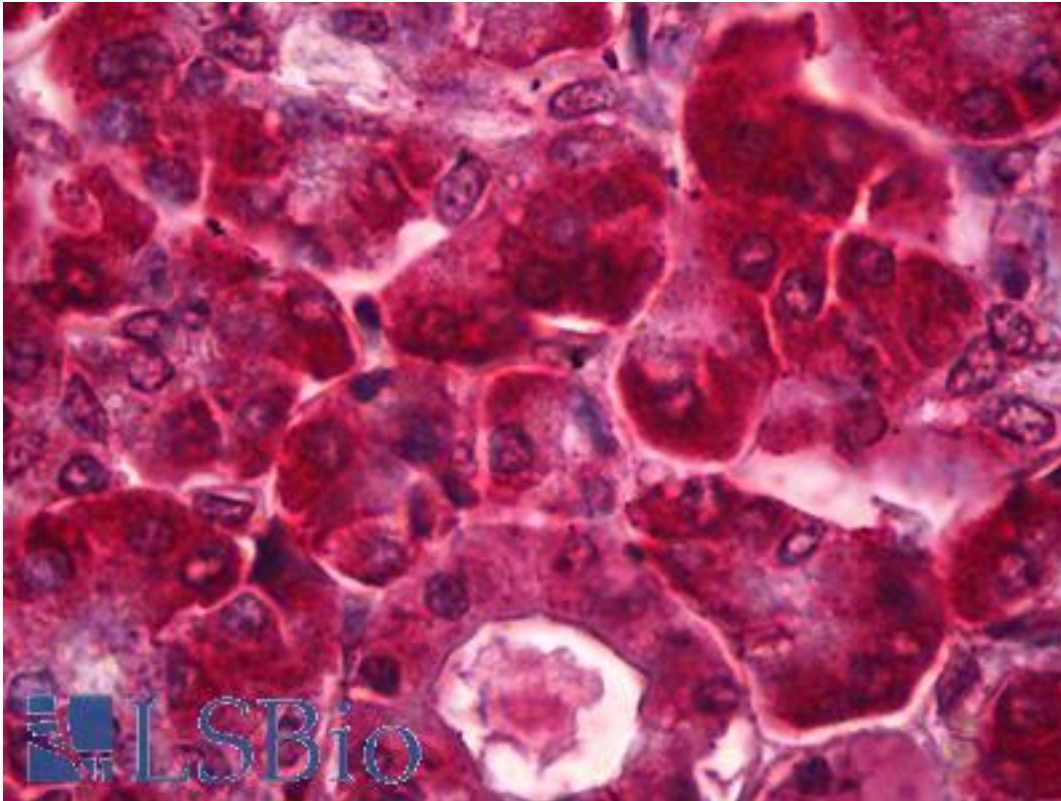


Osteoprotegerin / OPG Rabbit anti-Human Polyclonal Antibody - LS-B6363 - LSBio

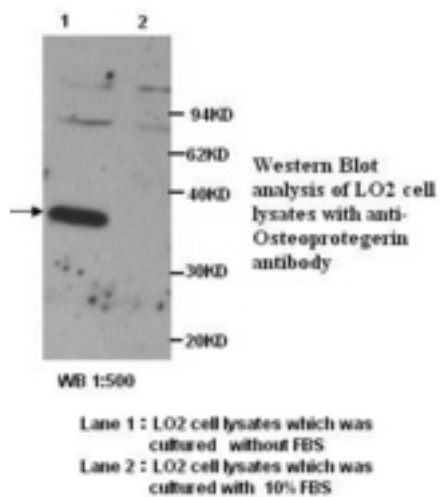
CatalogID:	LS-B6363
Validation:	This antibody replaces catalog number LS-C136954. It has been validated for use in the following assays: IHC-P.
Target:	tumor necrosis factor receptor superfamily, member 11b (TNFRSF11B)
Synonyms:	TNFRSF11B Antibody, OCIF Antibody, OPG Antibody, Osteoprotegerin Antibody, TR1 Antibody
Family / Subfamily:	TNF Receptor / not assigned-TNF Receptor
Host	TNFRSF11B antibody was produced in Rabbit
Clonality:	Polyclonal
Isotype:	IgG
Immunogen Species:	Osteoprotegerin / OPG antibody was raised against Human
Antigen Type:	Synthetic peptide
Immunogen:	Osteoprotegerin / OPG antibody was raised against synthetic peptide
Specificity:	Not yet tested in other species.
Reactivity:	Human
Purification:	Affinity purified
Presentation:	PBS (without Mg ²⁺ , Ca ²⁺), pH 7.4, 150 mM sodium chloride, 0.02% sodium azide, 50% glycerol
Recommended Storage:	Short term 4°C, long term aliquot and store at -20°C, avoid freeze thaw cycles.
Uses:	IHC - Paraffin (2 µg/ml), Western blot (1:200 - 1:1000), ELISA (1:20000 - 1:80000) (Optimal dilution to be determined by the researcher)
Size:	50 µl
Concentration:	1 mg/ml

Immunohistochemistry Image:



Anti-Osteoprotegerin antibody IHC of human pancreas, exocrine. Immunohistochemistry of formalin-fixed, paraffin-embedded tissue after heat-induced antigen retrieval. Antibody LS-B6363 concentration 2 ug/ml.

Western Blot Image:



Requested From:

Japan

Laboratory Reagent For In Vitro Research Use Only

Not for resale without prior written consent from LifeSpan BioSciences, Inc.

Created on 9/24/2014

© 2014 LifeSpan BioSciences