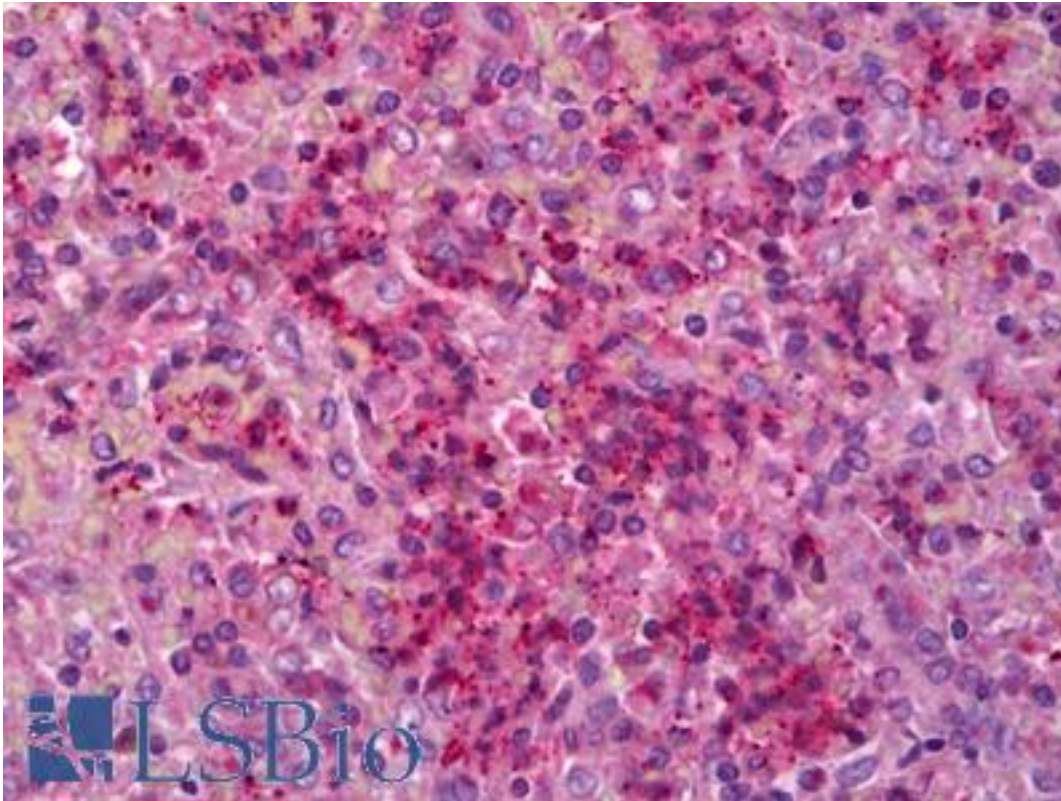


IL6R / IL6 Receptor Rabbit anti-Human Polyclonal Antibody - LS-B6362 - LSBio

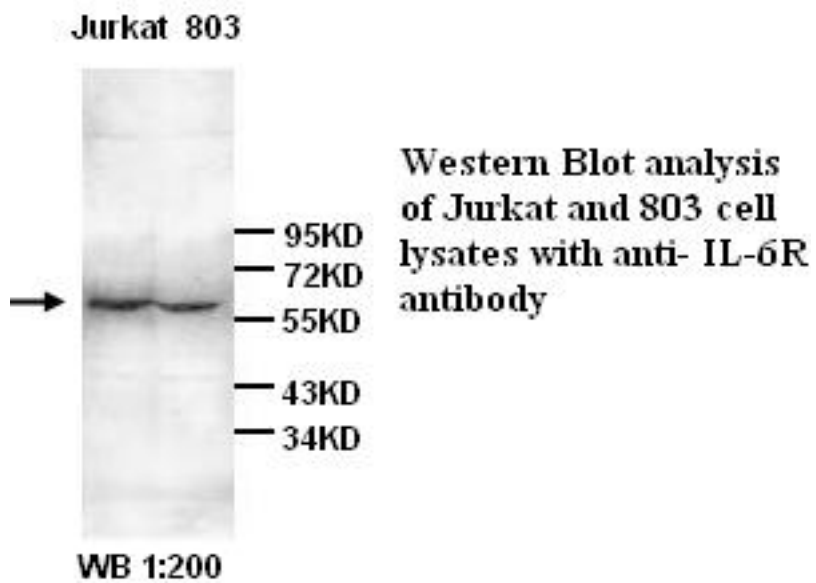
CatalogID:	LS-B6362
Validation:	This antibody replaces catalog number LS-C136945. It has been validated for use in the following assays: IHC-P.
Target:	interleukin 6 receptor (IL6R)
Synonyms:	IL6R Antibody, CD126 Antibody, gp80 Antibody, IL-6R subunit alpha Antibody, IL-6R-alpha Antibody, IL-6RA Antibody, IL6Q Antibody, IL-6 receptor subunit alpha Antibody, IL-6R 1 Antibody, IL-6R-1 Antibody, Interleukin 6 receptor Antibody, Membrane glycoprotein 80 Antibody, CD126 antigen Antibody, IL6RA Antibody, IL6RQ Antibody
Family / Subfamily:	Interleukin
Host	IL6R antibody was produced in Rabbit
Clonality:	Polyclonal
Isotype:	IgG
Immunogen Species:	IL6R / IL6 Receptor antibody was raised against Human
Antigen Type:	Synthetic peptide
Immunogen:	IL6R / IL6 Receptor antibody was raised against synthetic peptide
Specificity:	Not yet tested in other species.
Reactivity:	Human
Purification:	Affinity purified
Presentation:	PBS (without Mg ²⁺ , Ca ²⁺), pH 7.4, 150 mM sodium chloride, 0.02% sodium azide, 50% glycerol
Recommended Storage:	Short term 4°C, long term aliquot and store at -20°C, avoid freeze thaw cycles.
Uses:	IHC - Paraffin (2.5 µg/ml), Western blot (1:200 - 1:500), ELISA (1:40000 - 1:80000) (Optimal dilution to be determined by the researcher)
Size:	50 µl
Concentration:	1 mg/ml

Immunohistochemistry Image:



Anti-IL6R antibody IHC of human spleen. Immunohistochemistry of formalin-fixed, paraffin-embedded tissue after heat-induced antigen retrieval. Antibody LS-B6362 concentration 2.5 ug/ml.

Western Blot Image:



Requested From:

Japan

Laboratory Reagent For In Vitro Research Use Only

Not for resale without prior written consent from LifeSpan BioSciences, Inc.

Created on 9/24/2014

© 2014 LifeSpan BioSciences