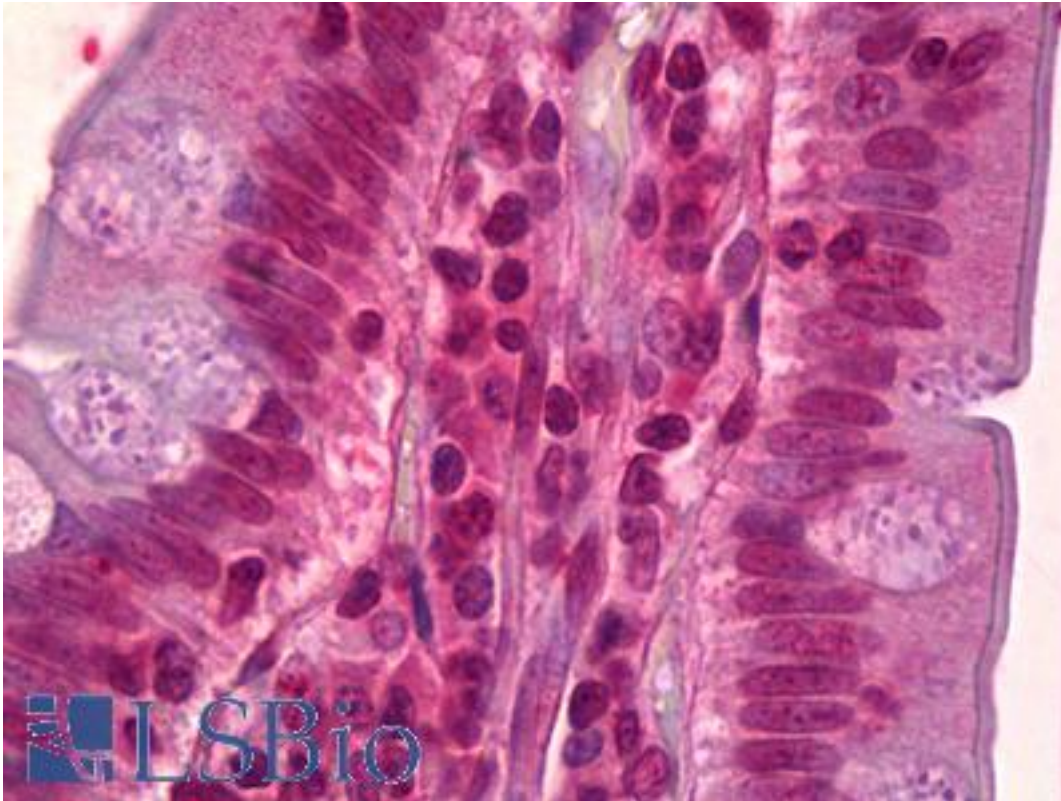


ATF4 Rabbit anti-Human Polyclonal Antibody - LS-B6361 - LSBio

CatalogID:	LS-B6361
Validation:	This antibody replaces catalog number LS-C136884. It has been validated for use in the following assays: IHC-P.
Target:	activating transcription factor 4 (ATF4)
Synonyms:	ATF4 Antibody, CREB-2 Antibody, CREB2 Antibody, TXREB Antibody, DNA-binding protein TAXREB67 Antibody, TAXREB67 Antibody
Family / Subfamily:	Transcription factor / not assigned-Transcription factor
Host	ATF4 antibody was produced in Rabbit
Clonality:	Polyclonal
Isotype:	IgG
Immunogen Species:	ATF4 antibody was raised against Human
Antigen Type:	Synthetic peptide
Immunogen:	ATF4 antibody was raised against synthetic peptide
Specificity:	ATF4 antibody detects endogenous levels of ATF4 protein. Not tested with other proteins.
Reactivity:	Human, Mouse, Rat
Purification:	Purified
Presentation:	PBS, pH 7.4, 0.05% sodium azide
Recommended Storage:	Short term 4°C, long term aliquot and store at -20°C, avoid freeze thaw cycles.
Uses:	IHC - Paraffin (2 µg/ml), Western blot (1:500), ELISA (1:20000) (Optimal dilution to be determined by the researcher)
Size:	50 µl
Concentration:	1 mg/ml

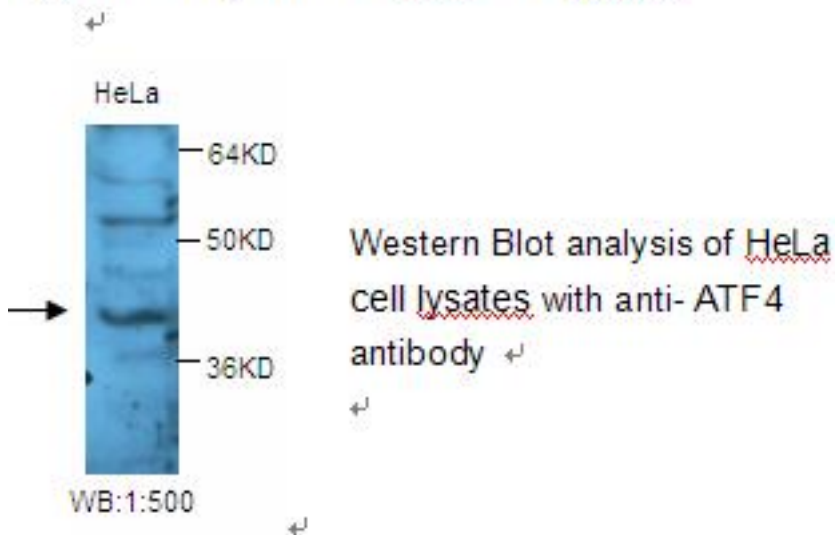
Immunohistochemistry Image:



Anti-ATF4 antibody IHC of human small intestine. Immunohistochemistry of formalin-fixed, paraffin-embedded tissue after heat-induced antigen retrieval. Antibody LS-B6361 concentration 2 ug/ml.

Western Blot Image:

This antibody identifies a band of approximately 40KD in HeLa cell lysates.



Requested From:

Japan

Laboratory Reagent For In Vitro Research Use Only

Not for resale without prior written consent from LifeSpan BioSciences, Inc.

Created on 9/24/2014

© 2014 LifeSpan BioSciences