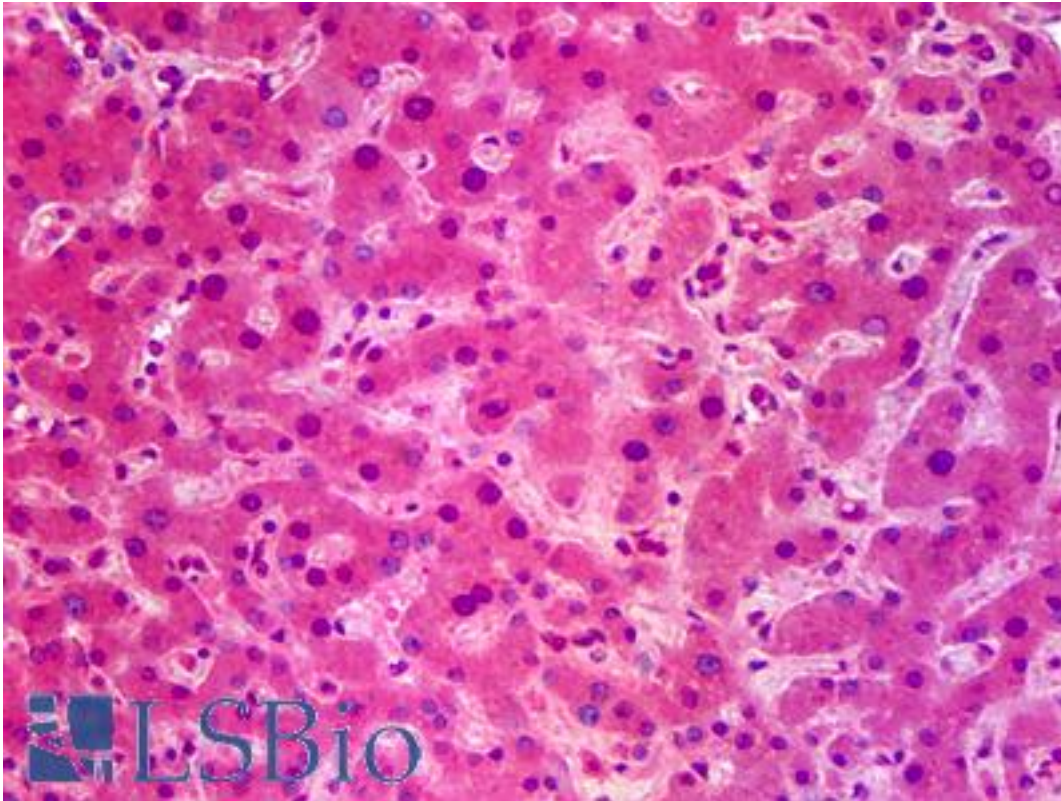


SIK1 / MSK Mouse anti-Human Monoclonal (2C12) Antibody - LS-B6355 - LSBio

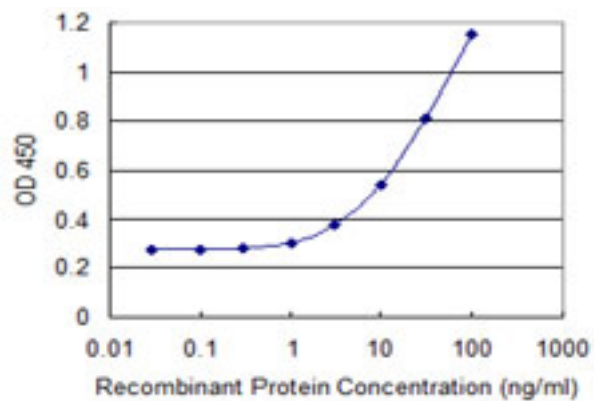
CatalogID:	LS-B6355
Validation:	This antibody replaces catalog number LS-C134125. It has been validated for use in the following assays: IHC-P.
Target:	salt-inducible kinase 1 (SIK1)
Synonyms:	SIK1 Antibody, KID2 Antibody, Salt-inducible kinase Antibody, Salt-inducible kinase 1 Antibody, Salt-inducible protein kinase Antibody, SIK Antibody, MSK Antibody, SIK-1 Antibody, SNF1-like kinase Antibody, Myocardial SNF1-like kinase Antibody, QIK Antibody, Qin-induced kinase Antibody, SNF1LK Antibody
Family / Subfamily:	Protein Kinase / AMPK/SNF1
Host	SIK1 antibody was produced in Mouse
Clonality:	Monoclonal
Isotype:	IgG2a,k
Clone Name:	2C12
Immunogen Species:	SIK1 / MSK antibody was raised against Human
Immunogen:	SIK1 / MSK antibody was raised against sIK1 (AAH38504, 1 a.a. ~ 101 a.a) partial recombinant protein with GST tag. MW of the GST tag alone is 26 KDa.
Specificity:	Human Snf1lk
Reactivity:	Human
Purification:	Protein A purified
Presentation:	PBS, pH 7.2
Recommended Storage:	Short term 4°C, long term aliquot and store at -20°C, avoid freeze thaw cycles.
Usage Summary:	Immunohistochemistry: Formalin-fixed paraffin-embedded sections. Sandwich ELISA: Recombinant protein.
Uses:	IHC - Paraffin (5 µg/ml), ELISA (Optimal dilution to be determined by the researcher)
Size:	50 µg
Concentration:	0.5 mg/ml

Immunohistochemistry Image:



Anti-SIK1 / SNF1LK antibody IHC of human liver. Immunohistochemistry of formalin-fixed, paraffin-embedded tissue after heat-induced antigen retrieval. Antibody LS-B6355 concentration 5 ug/ml.

ELISA Image:



Detection limit for recombinant GST tagged SIK1 is 0.3 ng/ml as a capture antibody.

Requested From:

Japan

Laboratory Reagent For In Vitro Research Use Only

Not for resale without prior written consent from LifeSpan BioSciences, Inc.

Created on 9/24/2014

© 2014 LifeSpan BioSciences