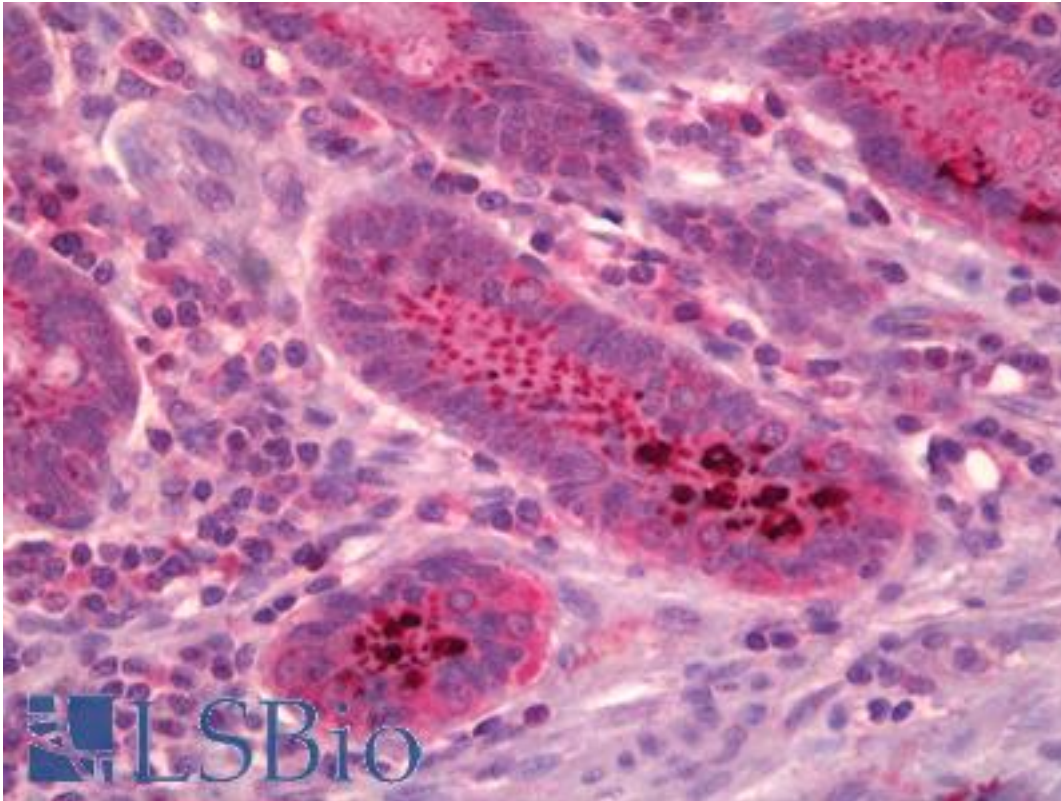


Protein Phosphatase 2 A/B Alpha Sheep Polyclonal (N-Terminus) Antibody - LS-B6332 - LSBio	
CatalogID:	LS-B6332
Validation:	This antibody replaces catalog number LS-C26540. It has been validated for use in the following assays: IHC-P.
Target:	Protein Phosphatase 2 A/B Alpha
Host	Sheep
Clonality:	Polyclonal
Specificity:	This peptide (NH ₂ -Phe-Ser-Gln-Val-Lys-Gly-Ala-Val-Asp- Asp-Asp-Val-Ala-Glu-COOH) corresponds to N -terminal peptide of PP2A/B alpha regulatory subunit having a MW of 55kD. The sequence used is amino acid 14-27.
Epitope:	N-Terminus
Reactivity:	Human, Mouse, Rat
Purification:	Ammonium sulfate precipitation
Presentation:	Provided as solution in phosphate buffered saline with 0.08% sodium azide
Recommended Storage:	Short term 4°C, long term aliquot and store at -20°C, avoid freeze thaw cycles.
Uses:	IHC - Paraffin (10 µg/ml), Western blot (5 - 10 µg/ml) (Optimal dilution to be determined by the researcher)
Size:	50 µg
Concentration:	1 mg/ml

Immunohistochemistry Image:



Anti-Protein Phosphatase 2 A/B Alpha antibody IHC of human small intestine. Immunohistochemistry of formalin-fixed, paraffin-embedded tissue after heat-induced antigen retrieval. Antibody LS-B6332 concentration 10 ug/ml.

Requested From:

Japan

Laboratory Reagent For In Vitro Research Use Only

Not for resale without prior written consent from LifeSpan BioSciences, Inc.

Created on 9/24/2014

© 2014 LifeSpan BioSciences