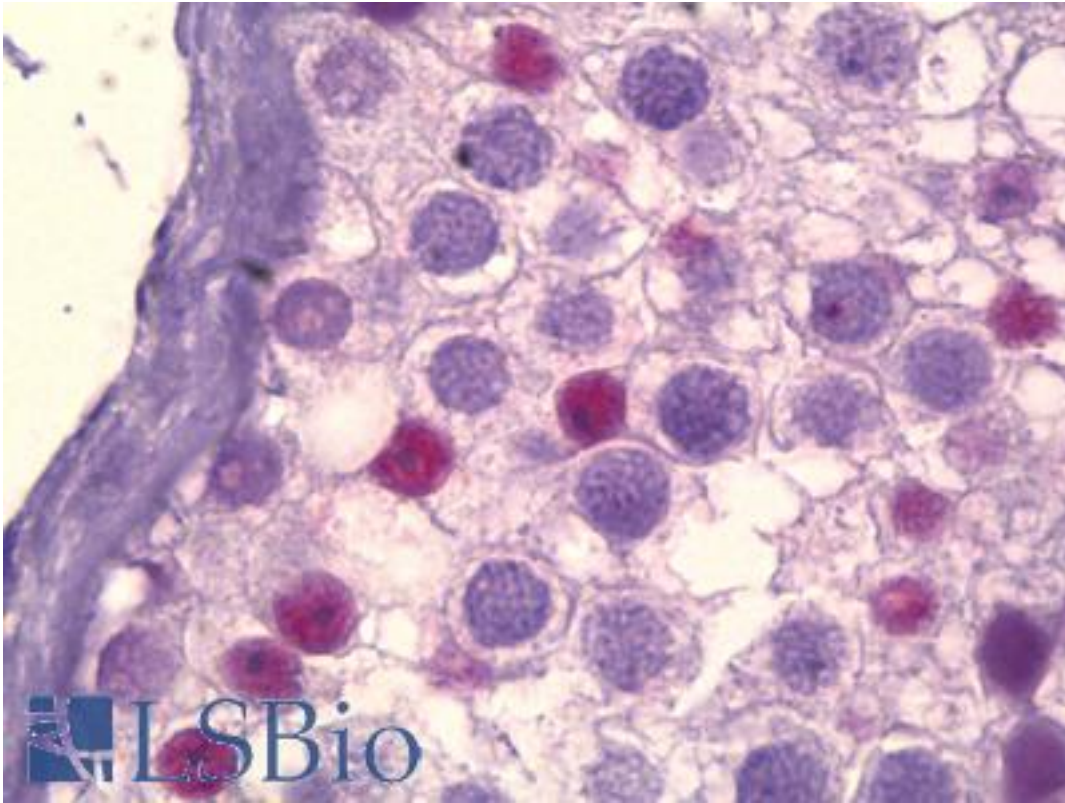


CREBBP / CBP Mouse anti-Human Monoclonal (aa2071-2091) Antibody - LS-B6319 - LSBio	
<b>CatalogID:</b>	LS-B6319
<b>Validation:</b>	This antibody replaces catalog number LS-C12614. It has been validated for use in the following assays: IHC-P.
<b>Target:</b>	CREB binding protein (CREBBP)
<b>Synonyms:</b>	CREBBP Antibody, CREB binding protein Antibody, CREB-binding protein Antibody, KAT3A Antibody, RSTS Antibody, Rubinstein-Taybi syndrome Antibody, RTS Antibody, CBP Antibody
<b>Host</b>	CREBBP antibody was produced in Mouse
<b>Clonality:</b>	Monoclonal
<b>Isotype:</b>	IgG2b
<b>Immunogen Species:</b>	CREBBP / CBP antibody was raised against Human
<b>Immunogen:</b>	CREBBP / CBP antibody was raised against purified p300 protein. Epitope: aa2071-2091.
<b>Specificity:</b>	Recognizes p300 and CBP. p300 and CBP differ by three noncontiguous residues within the 21 amino acid epitope region. A difference that does not detectably affect the reactivity of This antibody. Species cross-reactivity: human, monkey, mink, mouse, and rat.
<b>Epitope:</b>	aa2071-2091
<b>Reactivity:</b>	Human, Monkey, Mouse, Rat
<b>Purification:</b>	Protein A purified
<b>Presentation:</b>	PBS, pH 7.4, 0.2% BSA, 0.09% sodium azide, 40% glycerol.
<b>Recommended Storage:</b>	Long term: -20°C; Short term: +4°C; Avoid freeze-thaw cycles.
<b>Usage Summary:</b>	Suitable for use in Immunofluorescence and Immunohistochemistry. Immunohistochemistry (Formalin/paraffin): 1:25-1:50 for 20 minutes at RT. Staining of formalin-fixed tissues requires boiling tissue sections in 10 mM citrate buffer, pH 6.0, for 10-20 minutes followed by cooling at RT for 20 minutes. Positive control: Tonsil.
<b>Uses:</b>	IHC - Paraffin (1:25), Immunofluorescence (Optimal dilution to be determined by the researcher)
<b>Size:</b>	125 µl
<b>Concentration:</b>	0.1 mg/ml

**Immunohistochemistry Image:**



Anti-CREBBP antibody IHC of human testis. Immunohistochemistry of formalin-fixed, paraffin-embedded tissue after heat-induced antigen retrieval. Antibody LS-B6319 dilution 1:25.

**Requested From:**

Japan

Laboratory Reagent For In Vitro Research Use Only

Not for resale without prior written consent from LifeSpan BioSciences, Inc.

Created on 9/24/2014

© 2014 LifeSpan BioSciences