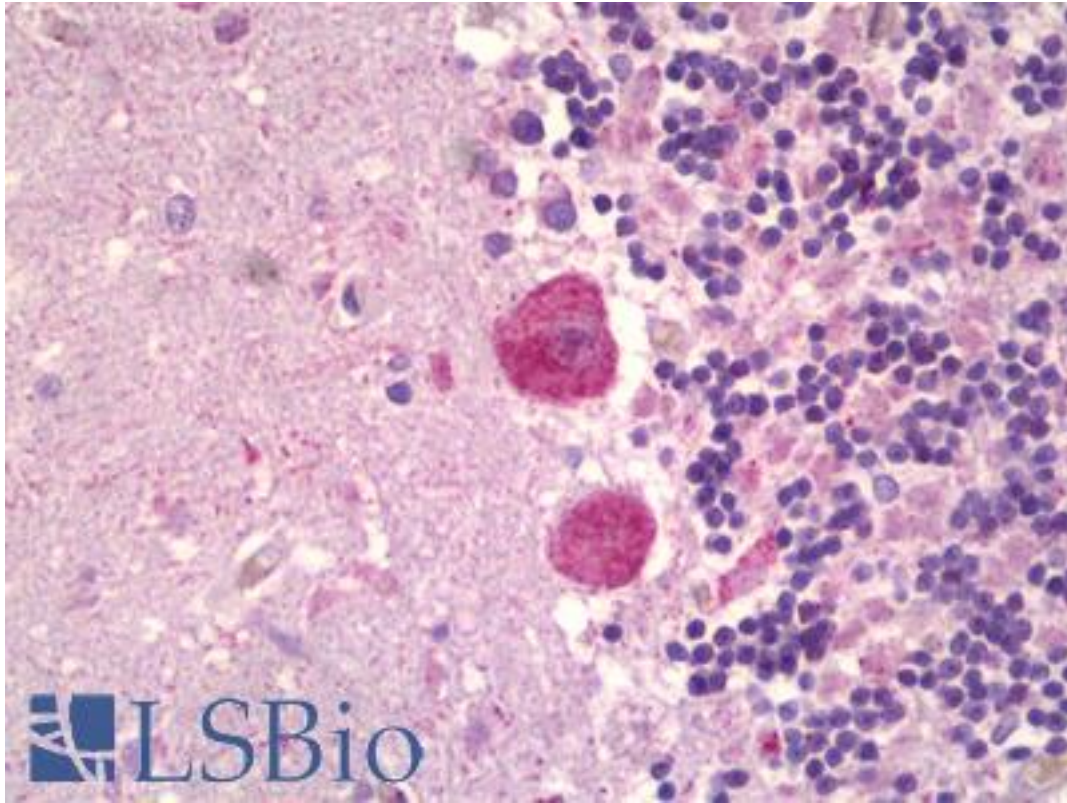


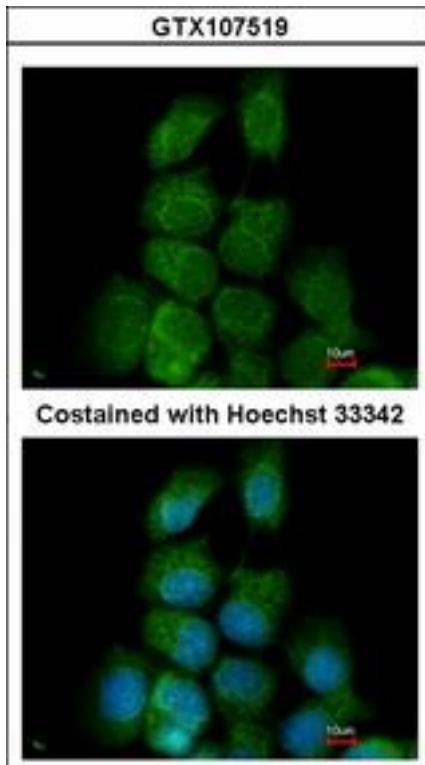
MAPK15 / ERK7 Rabbit anti-Human Polyclonal Antibody - LS-B6317 - LSBio	
CatalogID:	LS-B6317
Validation:	This antibody replaces catalog number LS-C109408. It has been validated for use in the following assays: IHC-P.
Target:	mitogen-activated protein kinase 15 (MAPK15)
Synonyms:	MAPK15 Antibody, ERK7 Antibody, ERK-8 Antibody, MAPK 15 Antibody, MAP kinase 15 Antibody, ERK-7 Antibody, ERK8 Antibody
Family / Subfamily:	Protein Kinase / MAPK
Host	MAPK15 antibody was produced in Rabbit
Clonality:	Polyclonal
Isotype:	IgG
Immunogen Species:	MAPK15 / ERK7 antibody was raised against Human
Immunogen:	MAPK15 / ERK7 antibody was raised against recombinant protein fragment contain a sequence corresponding to a region within amino acids 1 and 245 (Q8TD08) of MAPK15.
Specificity:	Human MAPK15.
Reactivity:	Human
Purification:	Immunoaffinity purified
Presentation:	0.1 M Tris-glycine, pH 7, 10% Glycerol, 0.01% Thimerosal
Recommended Storage:	Short term 4°C, long term aliquot and store at -20°C, avoid freeze thaw cycles.
Uses:	IHC - Paraffin (10 µg/ml), ICC (1:100 - 1:200), Immunofluorescence (1:100 - 1:200), Western blot (1:500 - 1:3000) (Optimal dilution to be determined by the researcher)
Size:	50 µl
Concentration:	1 mg/ml

Immunohistochemistry Image:



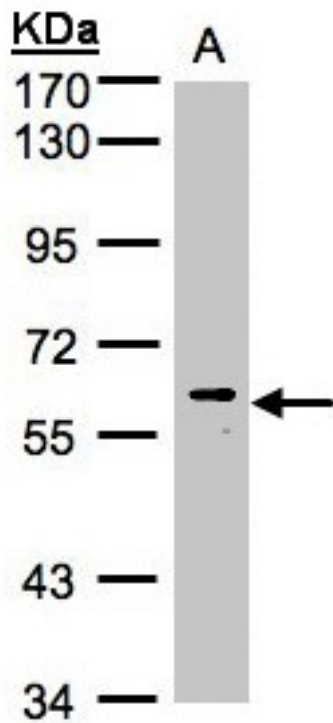
Anti-MAPK15 antibody IHC of human brain, cerebellum. Immunohistochemistry of formalin-fixed, paraffin-embedded tissue after heat-induced antigen retrieval. Antibody LS-B6317 concentration 10 ug/ml.

Immunofluorescence Image:



Immunofluorescence of methanol-fixed A431, using MAPK15 antibody at 1:200 dilution.

Western Blot Image:



Sample. A: 30g of HeLa S3 whole cell lysate. 7.5% SDS PAGE. MAPK15 antibody diluted at 1:1000

Requested From:

Japan

Laboratory Reagent For In Vitro Research Use Only

Not for resale without prior written consent from LifeSpan BioSciences, Inc.

Created on 9/24/2014

© 2014 LifeSpan BioSciences