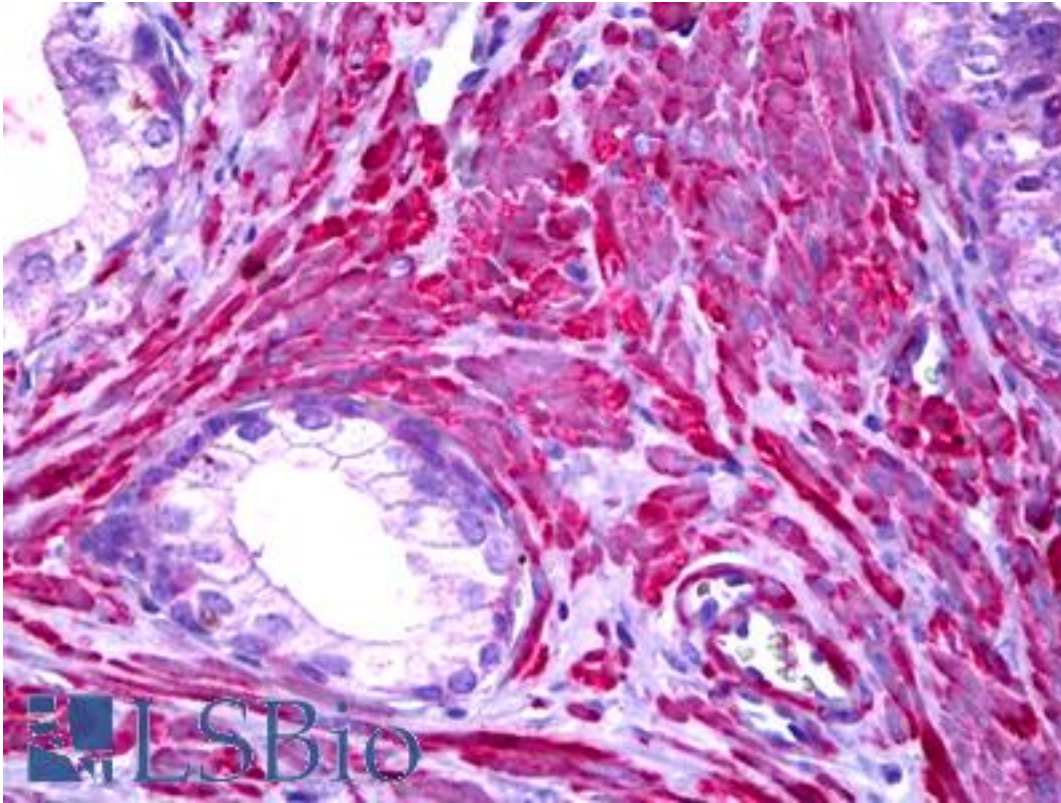


Filamin Mouse anti-Human Monoclonal (N-Terminus) Antibody - LS-B6314 - LSBio	
<b>CatalogID:</b>	LS-B6314
<b>Validation:</b>	This antibody replaces catalog number LS-C23663. It has been validated for use in the following assays: IHC-P.
<b>Target:</b>	Filamin
<b>Host</b>	Filamin antibody was produced in Mouse
<b>Clonality:</b>	Monoclonal
<b>Isotype:</b>	IgG1
<b>Immunogen Species:</b>	Filamin antibody was raised against Human
<b>Antigen Type:</b>	Purified protein
<b>Immunogen:</b>	Filamin antibody was raised against human platelet protein.
<b>Specificity:</b>	Recognizes native, full-length human filamin (actin-binding protein) at 270-280kD and 190kD N-terminal calpain cleavage fragment of filamin. Following induction of apoptosis in U937 cells, recognizes 170, 150, and 120kD N-terminal cleavage fragments of the full-length from presumably resulting from cleavage by activated caspase-3. Species cross-reactivity: Chicken, guinea pig, rabbit and rat.
<b>Epitope:</b>	N-Terminus
<b>Reactivity:</b>	Human, Mouse, Rat, Guinea pig, Rabbit, Chicken
<b>Purification:</b>	Ascites
<b>Presentation:</b>	0.1% sodium azide
<b>Recommended Storage:</b>	Short term 4°C, long term aliquot and store at -20°C, avoid freeze thaw cycles.
<b>Usage Summary:</b>	Suitable for use in Western Blot, Immunoprecipitation and Immunofluorescence. Western Blot: 1:500-1:2000. Immunoprecipitation: 5 ul per 300-500 ul of cell lysate (200-500 ug total protein). Recommended Lysis buffer is PBS, 05% triton X-100 with proteinase inhibitors. Note: For full-length filamin include calpain inhibitors. Incubate for 1 hour at RT or overnight at 4C. For best recovery, use Protein A/G agarose beads or rabbit anti-mouse secondary capture antibody. 4-8% acrylamide gels are recommended for full-length filamin or the 190kD fragment separation and visualization. Immunofluorescence (Frozen): 1:25-1:100. Immunohistochemistry, human-FFPE, 1:50.
<b>Uses:</b>	IHC - Paraffin (1:50), Immunofluorescence (1:50 - 1:200), Western blot (1:500 - 1:2000), Immunoprecipitation (Optimal dilution to be determined by the researcher)
<b>Size:</b>	50 µl

**Immunohistochemistry Image:**



Anti-Filamin antibody IHC of human prostate, smooth muscle. Immunohistochemistry of formalin-fixed, paraffin-embedded tissue after heat-induced antigen retrieval. Antibody LS-B6314 dilution 1:50.

**Requested From:**

Japan

Laboratory Reagent For In Vitro Research Use Only

Not for resale without prior written consent from LifeSpan BioSciences, Inc.

Created on 9/24/2014

© 2014 LifeSpan BioSciences