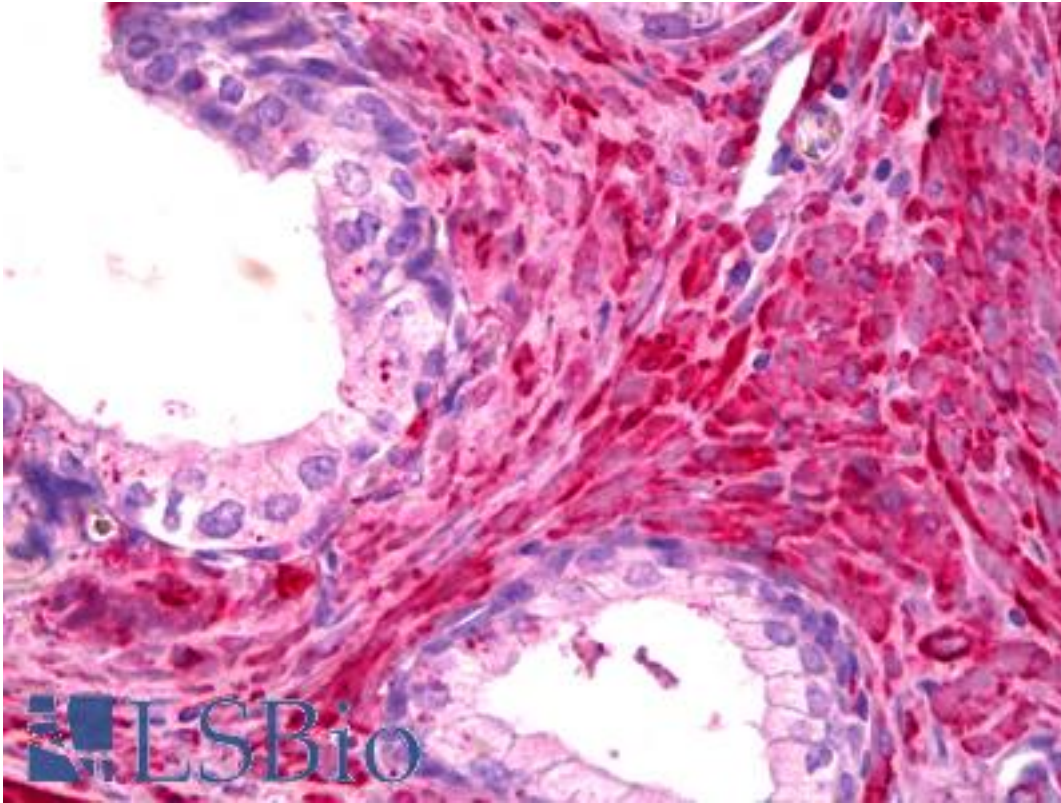


Filamin Mouse anti-Human Monoclonal Antibody - LS-B6313 - LSBio	
<b>CatalogID:</b>	LS-B6313
<b>Validation:</b>	This antibody replaces catalog number LS-C23664. It has been validated for use in the following assays: IHC-P.
<b>Target:</b>	Filamin
<b>Host</b>	Filamin antibody was produced in Mouse
<b>Clonality:</b>	Monoclonal
<b>Isotype:</b>	IgG1
<b>Immunogen Species:</b>	Filamin antibody was raised against Human
<b>Antigen Type:</b>	Purified protein
<b>Immunogen:</b>	Filamin antibody was raised against human platelet protein.
<b>Specificity:</b>	Human filamin (actin-binding protein). Recognizes the 90kD fragment of filamin produced by calpain cleavage. Species cross-reactivity: Human and bovine. Does not react with Mouse or rat.
<b>Reactivity:</b>	Human, Bovine
<b>Purification:</b>	Ascites
<b>Presentation:</b>	No preservatives added.
<b>Recommended Storage:</b>	Short term 4°C, long term aliquot and store at -20°C, avoid freeze thaw cycles.
<b>Usage Summary:</b>	Suitable for use in Western Blot, Immunoprecipitation, Immunohistochemistry and Immunofluorescence. Western Blot: 1:250-1:1000. Immunoprecipitation: Suggested lysis buffer is PBS with 0.5% triton X-100 with proteinase inhibitors (note for full length filamin include calpain inhibitors). 5 microliters of antibody for every 300-500µL of cell lysate (200-500 ug/mL total protein is suggested. Incubation is 1hour RT or overnight 4C; Protein A/G agarose beads or rabbit anti-mouse secondary capture antibody is recommended for best recovery. 4-10% acrylamide gels are recommended for full length filamin or the 80kD fragment visualization. Immunofluorescence:1:50-1:200. ABC. Immunohistochemistry: foramlin-fixed paraffin-embedded sections. Requires HIER (citrate buffer). Positive control: Human, prostate or bovine skin.
<b>Uses:</b>	IHC - Paraffin (1:50), Immunofluorescence (1:50 - 1:200), Western blot (1:250 - 1:1000), Immunoprecipitation (Optimal dilution to be determined by the researcher)
<b>Size:</b>	50 µl

**Immunohistochemistry Image:**



Anti-Filamin antibody IHC of human prostate, smooth muscle. Immunohistochemistry of formalin-fixed, paraffin-embedded tissue after heat-induced antigen retrieval. Antibody LS-B6313 dilution 1:50.

**Requested From:**

Japan

Laboratory Reagent For In Vitro Research Use Only

Not for resale without prior written consent from LifeSpan BioSciences, Inc.

Created on 9/24/2014

© 2014 LifeSpan BioSciences