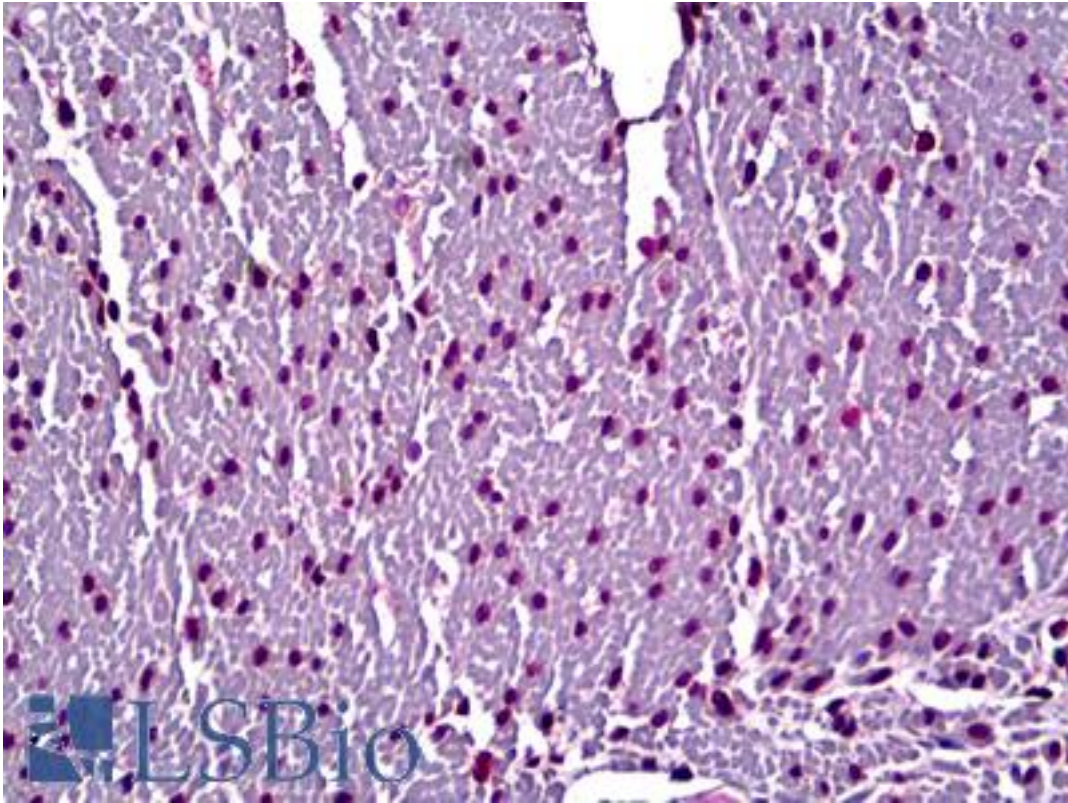


Myosin, Cardiac Heavy Chain Mouse anti-Human Monoclonal Antibody - LS-B6307 - LSBio	
<b>CatalogID:</b>	LS-B6307
<b>Validation:</b>	This antibody replaces catalog number LS-C73073. It has been validated for use in the following assays: IHC-P.
<b>Target:</b>	Myosin, Cardiac, Heavy Chain
<b>Host</b>	Mouse
<b>Clonality:</b>	Monoclonal
<b>Isotype:</b>	IgG1,k
<b>Immunogen Species:</b>	Human
<b>Antigen Type:</b>	Native protein
<b>Immunogen:</b>	Full length native protein (purified) (Human).
<b>Specificity:</b>	This antibody is myosin alpha and beta heavy chain specific. Affinity constants for: Human ventricular myosin heavy chains - $3.33 \times 10^8$ /M Human atrial myosin heavy chains - $1.48 \times 10^8$ /M Human skeletal muscle myosin - $1.06 \times 10^8$ /M Canine cardiac myosin heavy chains - $2.06 \times 10^8$ /M. 3-48 antibody cross-reacts with heavy chains of human myosin isolated from: slow skeletal muscle, fast skeletal muscle, eye muscle, and streptococcal M5 peptide. It does not react with human platelet, smooth muscle myosin heavy chains, myosin light chains, myosin fragments circulating in blood of patients with myocardial infarction, nor does it react with any other human tissue antigens or blood cells. Myosin heavy chain is specific for cardiomyocytes. Species cross-reactivity: Cross-reacts with bovine, Human, Mouse, Rabbit, Rat, canine and porcine.
<b>Reactivity:</b>	Human, Mouse, Rat, Bovine, Dog, Pig, Rabbit
<b>Purification:</b>	Purified
<b>Presentation:</b>	PBS, pH 7.4. No preservatives added.
<b>Recommended Storage:</b>	Short term 4°C, long term aliquot and store at -20°C, avoid freeze thaw cycles.
<b>Usage Summary:</b>	Suitable for use in Immunofluorescence, ELISA, Western Blot and Immunohistochemistry. Immunohistochemistry (Frozen and FFPE)
<b>Uses:</b>	IHC - Paraffin (5 µg/ml), IHC - Frozen (10 µg/ml), Immunofluorescence, Western blot, ELISA (Optimal dilution to be determined by the researcher)
<b>Size:</b>	50 µg
<b>Concentration:</b>	1 mg/ml

**Immunohistochemistry Image:**



Anti-Myosin, Cardiac Heavy Chain antibody IHC of human heart. Immunohistochemistry of formalin-fixed, paraffin-embedded tissue after heat-induced antigen retrieval. Antibody LS-B6307 concentration 5 ug/ml.

**Requested From:**

Japan

Laboratory Reagent For In Vitro Research Use Only

Not for resale without prior written consent from LifeSpan BioSciences, Inc.

Created on 9/24/2014

© 2014 LifeSpan BioSciences