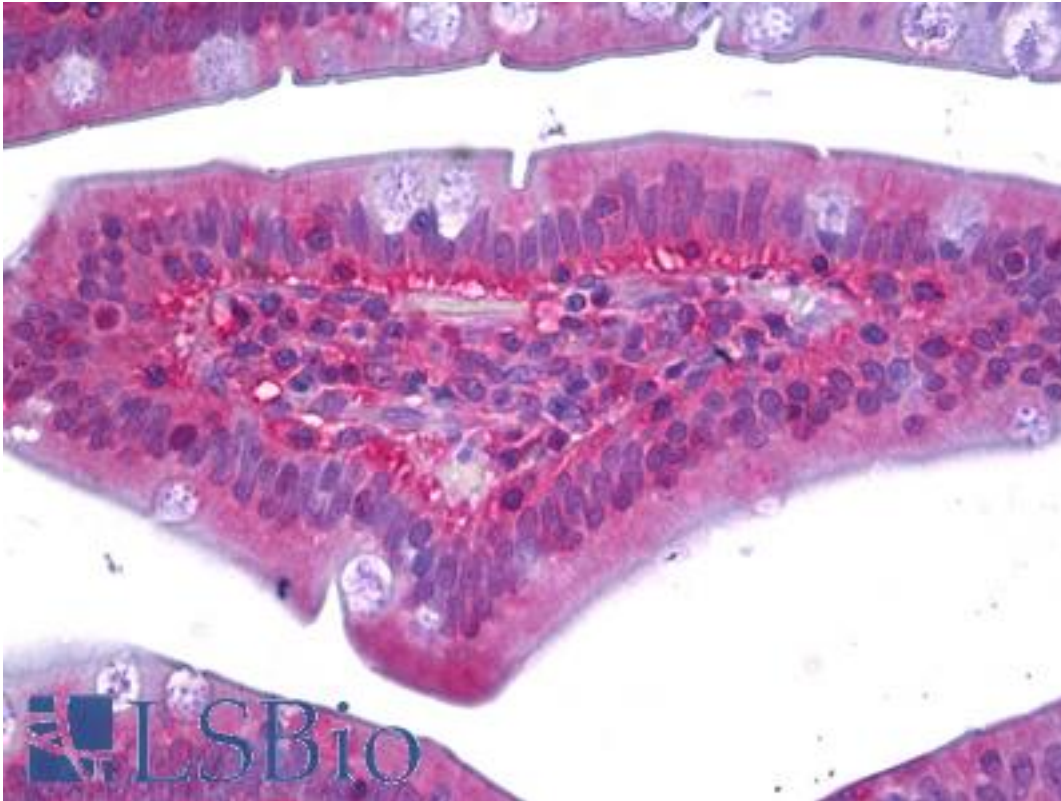


RAC1 Mouse anti-Human Monoclonal Antibody - LS-B6306 - LSBio	
CatalogID:	LS-B6306
Validation:	This antibody replaces catalog number LS-C9852. It has been validated for use in the following assays: IHC-P.
Target:	ras-related C3 botulinum toxin substrate 1 (rho family, small GTP binding protein Rac1)
Synonyms:	RAC1 Antibody, MIG5 Antibody, p21-Rac1 Antibody, Ras-like protein TC25 Antibody, TC25 Antibody, TC-25 Antibody, Rac-1 Antibody
Family / Subfamily:	Ras GTPase superfamily IPR001806 / not assigned-Ras GTPase superfamily IPR001806
Host	RAC1 antibody was produced in Mouse
Clonality:	Monoclonal
Isotype:	IgG2b
Immunogen Species:	RAC1 antibody was raised against Human
Antigen Type:	Recombinant protein
Immunogen:	RAC1 antibody was raised against recombinant protein containing the full length human Rac1.
Specificity:	Recognizes human Rac1 at 21kD. Slight Rac2 cross-reactivity is observed. An additional unknown protein of ~55kD may be detected in some preparations. Species cross-reactivity: mouse and rat.
Reactivity:	Human, Mouse, Rat
Purification:	Protein G purified
Presentation:	0.1 M Tris-glycine, pH 7.4, 0.15 M sodium chloride, 0.05% sodium azide, 30% glycerol.
Recommended Storage:	Long term: -20°C; Short term: +4°C. Avoid repeat freeze-thaw cycles.
Usage Summary:	Suitable for use in Western Blot, Immunohistochemistry, Affinity Precipitation and Immunoprecipitation. Proteins were visualized using a goat anti-mouse secondary antibody conjugated to HRP and a chemiluminescence detection system. Proteins were detected by Western Blot analysis using 1 ug/ml. Immunoprecipitation: 4 ug immunoprecipitated Rac1 from a rat brain microsomal protein preparation.
Uses:	IHC - Paraffin (10 µg/ml), Western blot (0.5 - 2 µg/ml), Immunoprecipitation (Optimal dilution to be determined by the researcher)
Size:	50 µg
Concentration:	1 mg/ml

Immunohistochemistry Image:



Anti-RAC1 antibody IHC of human small intestine. Immunohistochemistry of formalin-fixed, paraffin-embedded tissue after heat-induced antigen retrieval. Antibody LS-B6306 concentration 10 ug/ml.

Requested From:

Japan

Laboratory Reagent For In Vitro Research Use Only

Not for resale without prior written consent from LifeSpan BioSciences, Inc.

Created on 9/24/2014

© 2014 LifeSpan BioSciences