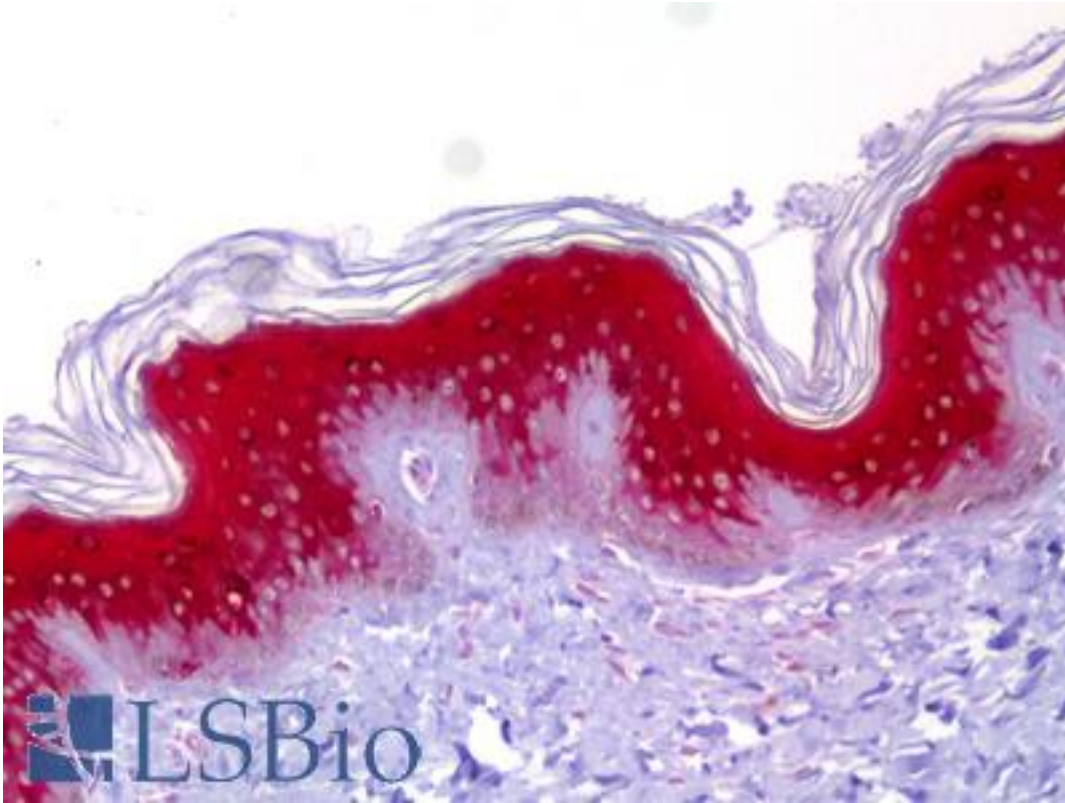


IVL / Involucrin Mouse anti-Human Monoclonal (SY5) Antibody - LS-B6298 - LSBio

CatalogID:	LS-B6298
Validation:	This antibody replaces catalog number LS-C11369. It has been validated for use in the following assays: IHC-P.
Target:	involucrin (IVL)
Synonyms:	IVL Antibody, Involucrin Antibody
Host	IVL antibody was produced in Mouse
Clonality:	Monoclonal
Isotype:	IgG1
Clone Name:	SY5
Immunogen Species:	IVL / Involucrin antibody was raised against Human
Immunogen:	IVL / Involucrin antibody was raised against native, from keratinocytes.
Specificity:	The epitope maps between codon 421-568 of human involucrin
Reactivity:	Human, Gorilla, Monkey, Dog, Pig
Non-Reactivity:	Mouse
Purification:	Protein A purified
Presentation:	PBS, 0.09% sodium azide. Sourced in TCS.
Recommended Storage:	Short term 4°C, long term aliquot and store at -20°C, avoid freeze thaw cycles.
Uses:	IHC - Paraffin (10 µg/ml), IHC - Frozen, Western blot, Immunoprecipitation, ELISA (Optimal dilution to be determined by the researcher)
Size:	50 µg
Concentration:	0.5 mg/ml

Immunohistochemistry Image:



Anti-IVL / Involucrin antibody IHC of human skin. Immunohistochemistry of formalin-fixed, paraffin-embedded tissue after heat-induced antigen retrieval. Antibody LS-B6298 concentration 10 ug/ml.

Requested From:

Japan

Laboratory Reagent For In Vitro Research Use Only

Not for resale without prior written consent from LifeSpan BioSciences, Inc.

Created on 9/24/2014

© 2014 LifeSpan BioSciences