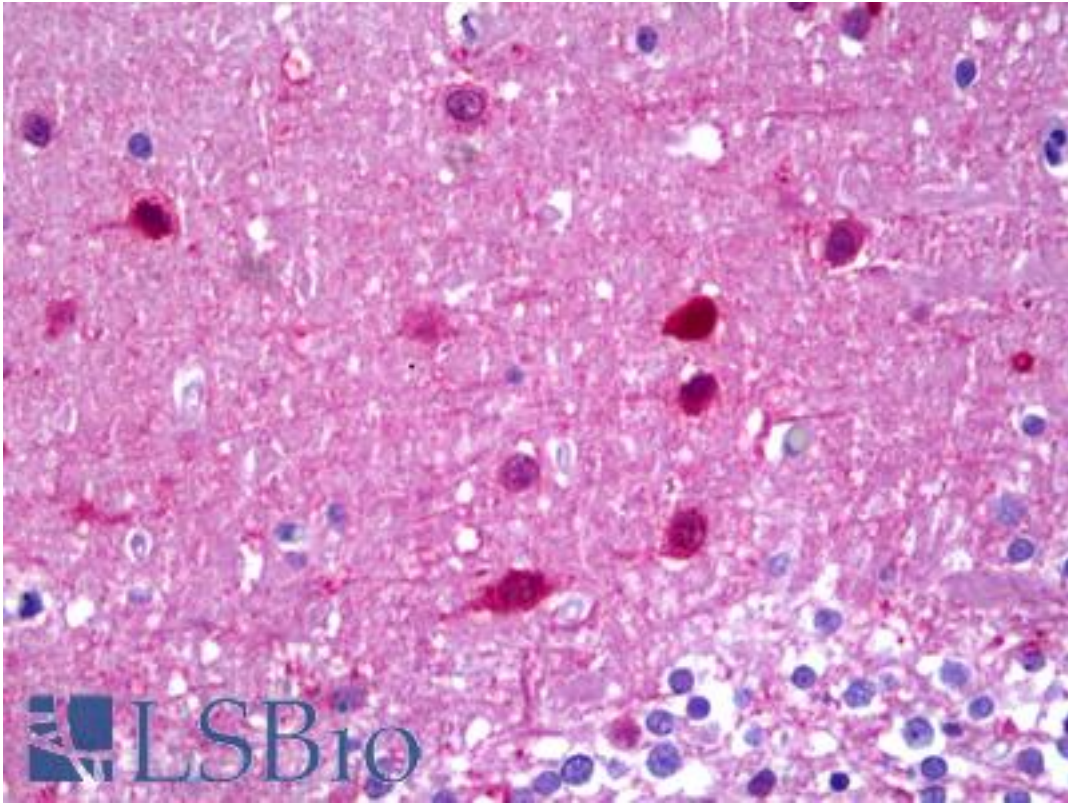


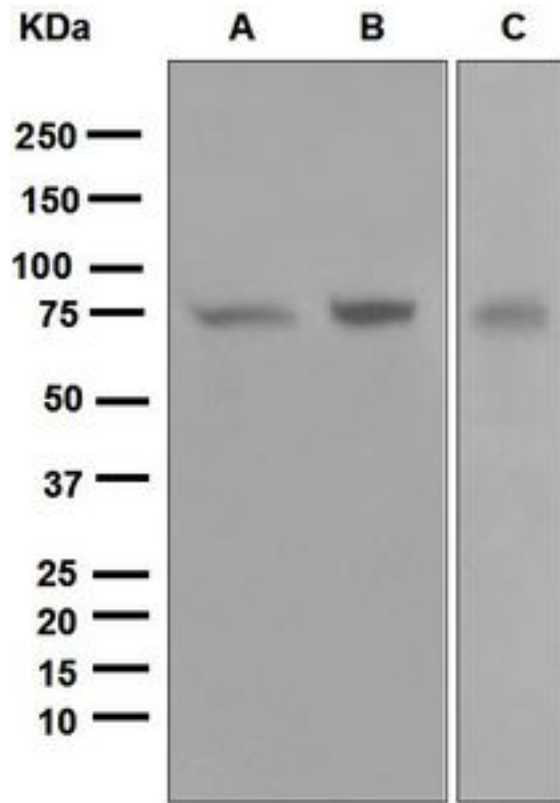
PRKCZ / PKC-Zeta Rabbit anti-Human Monoclonal (Internal) (EP1490(2)) Antibody - LS-B6294 - LSBio	
CatalogID:	LS-B6294
Validation:	This antibody replaces catalog number LS-C138603. It has been validated for use in the following assays: IHC-P.
Target:	protein kinase C, zeta (PRKCZ)
Synonyms:	PRKCZ Antibody, PKC-ZETA Antibody, PKC2 Antibody, PkcZ Antibody, PKCzeta Antibody, Protein kinase c zeta Antibody, Protein kinase C zeta type Antibody, NPKC-zeta Antibody, PKC Zeta Antibody, Protein kinase C, zeta Antibody, Protein kinase Czeta Antibody
Family / Subfamily:	Protein Kinase / PKC
Host	PRKCZ antibody was produced in Rabbit
Clonality:	Monoclonal
Clone Name:	EP1490(2)
Immunogen Species:	PRKCZ / PKC-Zeta antibody was raised against Human
Antigen Type:	Synthetic peptide
Immunogen:	PRKCZ / PKC-Zeta antibody was raised against synthetic peptide
Specificity:	Human PKC-Zeta. Species cross-reactivity is based on WB analysis.
Epitope:	Internal
Reactivity:	Human, Mouse, Rat
Purification:	Tissue culture supernatant
Presentation:	Tris-Glycine-NaCl or PBS, pH 7.2-7.4, 40-50% Glycerol, 0.01% sodium azide, 0.05% BSA
Recommended Storage:	Short term 4°C, long term aliquot and store at -20°C, avoid freeze thaw cycles.
Uses:	IHC - Paraffin (1:50), Western blot (1:1000 - 1:10000) (Optimal dilution to be determined by the researcher)
Size:	50 µl

Immunohistochemistry Image:



Anti-PRKCZ / PKC-Zeta antibody IHC of human brain cerebellum. Immunohistochemistry of formalin-fixed, paraffin-embedded tissue after heat-induced antigen retrieval. Antibody LS-B6294 dilution 1:50.

Western Blot Image:



Western blot analysis on (A) 293T, (B) HT-29, and (C) fetal liver lysates using LS-B6294.

Requested From:

Japan

Laboratory Reagent For In Vitro Research Use Only

Not for resale without prior written consent from LifeSpan BioSciences, Inc.

Created on 9/24/2014

© 2014 LifeSpan BioSciences