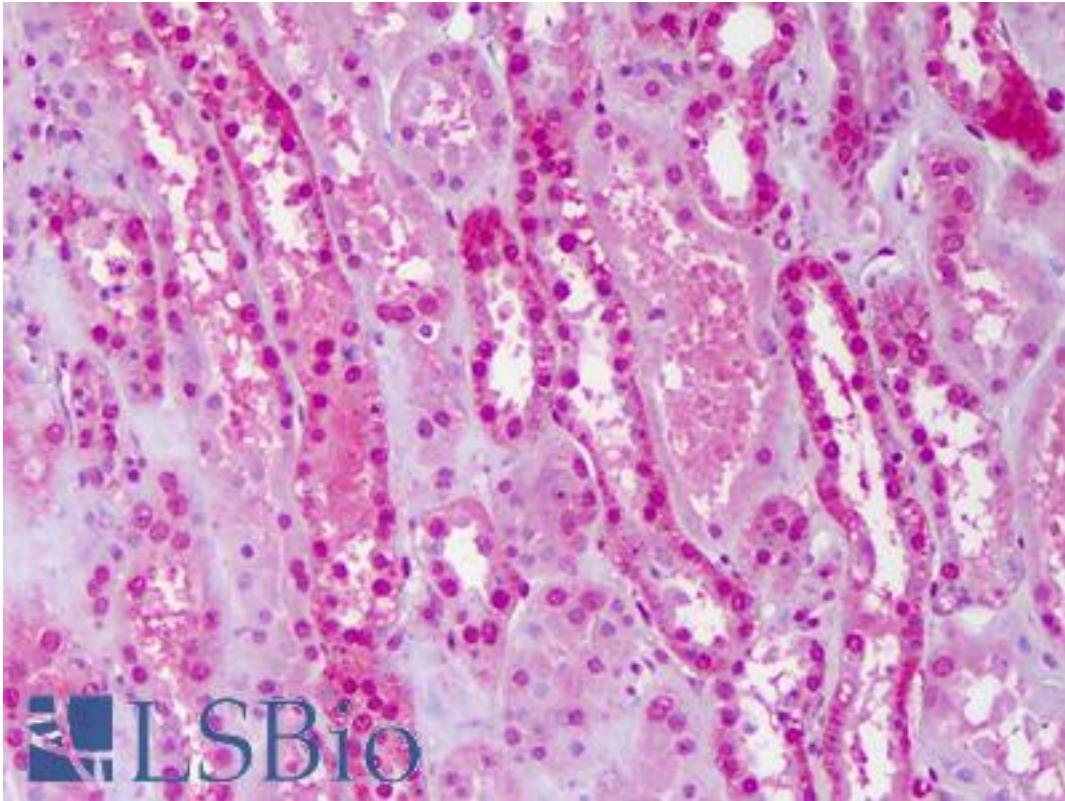


PBX3 Mouse anti-Human Monoclonal (1A11) Antibody - LS-B6292 - LSBio

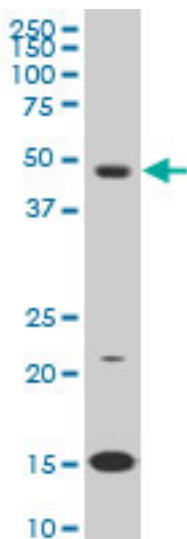
CatalogID:	LS-B6292
Validation:	This antibody replaces catalog number LS-C133922. It has been validated for use in the following assays: IHC-P.
Target:	pre-B-cell leukemia homeobox 3 (PBX3)
Synonyms:	PBX3 Antibody, Pre-B-cell leukemia homeobox 3 Antibody, Homeobox protein PBX3 Antibody
Host	PBX3 antibody was produced in Mouse
Clonality:	Monoclonal
Isotype:	IgG2a,k
Clone Name:	1A11
Immunogen Species:	PBX3 antibody was raised against Human
Immunogen:	PBX3 antibody was raised against pPBX3 (NP_006186, 342 a.a. ~ 435 a.a) partial recombinant protein with GST tag. MW of the GST tag alone is 26 KDa.
Specificity:	Human Pbx3
Reactivity:	Human
Purification:	Protein A purified
Presentation:	PBS, pH 7.2. Sourced in Ascites.
Recommended Storage:	Store at -20°C or lower. Aliquot to avoid repeated freezing and thawing.
Usage Summary:	Immunohistochemistry: Formalin-fixed paraffin-embedded sections. Sandwich ELISA: Recombinant protein. Western Blot: Cell lysate, Recombinant protein.
Uses:	IHC - Paraffin (5 µg/ml), Western blot, ELISA (Optimal dilution to be determined by the researcher)
Size:	50 µg
Concentration:	0.5 mg/ml

Immunohistochemistry Image:



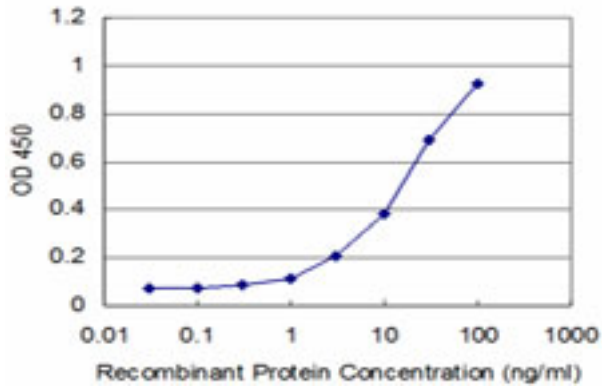
Anti-PBX3 antibody IHC of human kidney. Immunohistochemistry of formalin-fixed, paraffin-embedded tissue after heat-induced antigen retrieval. Antibody LS-B6292 concentration 5 ug/ml.

Western Blot Image:



LS-B6292 Western blot of PBX3 expression in K-562.

ELISA Image:



Detection limit for recombinant GST tagged PBX3 is approximately 1 ng/ml as a capture antibody.

Requested From:

Japan

Laboratory Reagent For In Vitro Research Use Only

Not for resale without prior written consent from LifeSpan BioSciences, Inc.

Created on 9/24/2014

© 2014 LifeSpan BioSciences