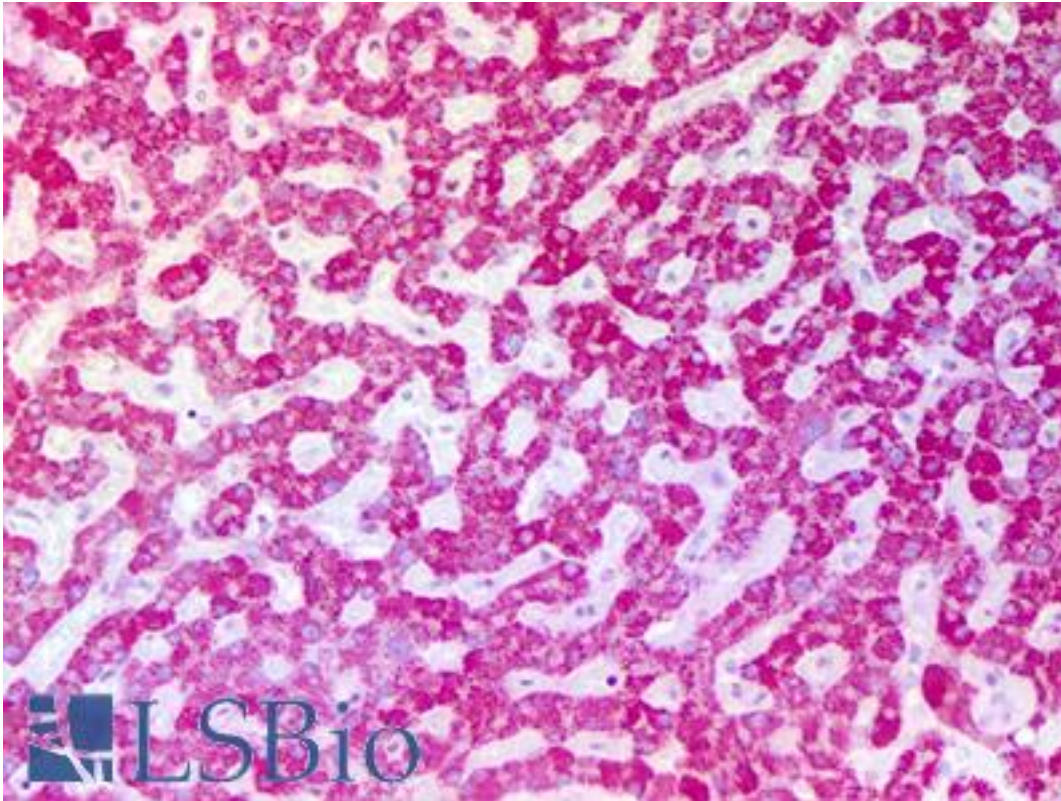


ASPM Rabbit anti-Human Polyclonal Antibody - LS-B6291 - LSBio

CatalogID:	LS-B6291
Validation:	This antibody replaces catalog number LS-C122702. It has been validated for use in the following assays: IHC-P.
Target:	asp (abnormal spindle) homolog, microcephaly associated (Drosophila) (ASPM)
Synonyms:	ASPM Antibody, Asp homolog Antibody, Calmbp1 Antibody, MCPH5 Antibody, ASP Antibody
Host	ASPM antibody was produced in Rabbit
Clonality:	Polyclonal
Isotype:	IgG
Immunogen Species:	ASPM antibody was raised against Human
Antigen Type:	Synthetic peptide - KLH conjugated
Immunogen:	ASPM antibody was raised against synthetic peptide corresponding to human ASPM (KLH).
Specificity:	Recognizes human ASPM. Species cross-reactivity: rat. Sequence homology: chimpanzee, primate.
Reactivity:	Human
Purification:	Affinity purified
Presentation:	0.1 M Tris-glycine, pH 7.4, 150 mM sodium chloride, 0.05% sodium azide
Recommended Storage:	May be stored at 4°C for short-term only. Aliquot to avoid repeated freezing and thawing. Store at -20°C. Aliquots are stable for at least 12 months.
Usage Summary:	Suitable for use in Western Blot (1:300) and Immunohistochemistry.
Uses:	IHC - Paraffin (5 µg/ml), Western blot (Optimal dilution to be determined by the researcher)
Size:	50 µg
Concentration:	1 mg/ml

Immunohistochemistry Image:



Anti-ASPM antibody IHC of human liver. Immunohistochemistry of formalin-fixed, paraffin-embedded tissue after heat-induced antigen retrieval. Antibody LS-B6291 concentration 5 ug/ml.

Requested From:

Japan

Laboratory Reagent For In Vitro Research Use Only

Not for resale without prior written consent from LifeSpan BioSciences, Inc.

Created on 9/24/2014

© 2014 LifeSpan BioSciences