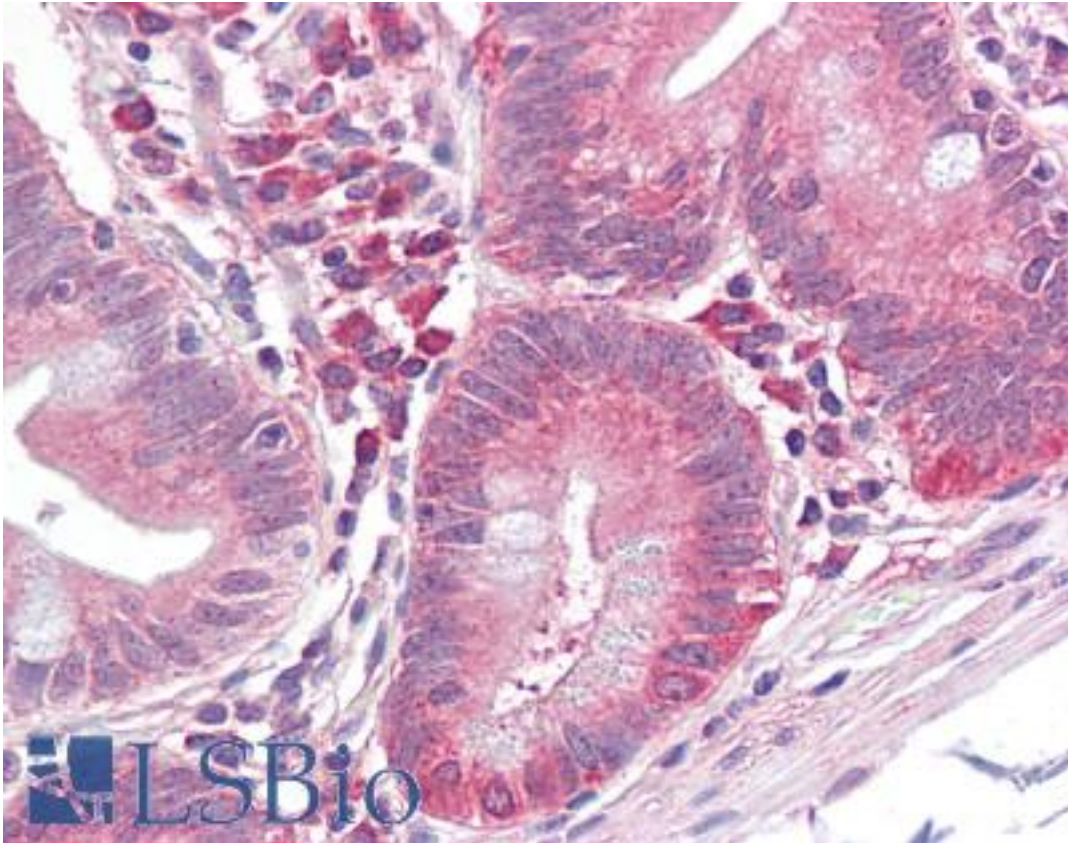


EIF2S1 Mouse anti-Human Monoclonal (AT5E10) Antibody - LS-B6273 - LSBio

CatalogID:	LS-B6273
Validation:	This antibody replaces catalog number LS-C139561. It has been validated for use in the following assays: IHC-P.
Target:	eukaryotic translation initiation factor 2, subunit 1 alpha, 35kDa (EIF2S1)
Synonyms:	EIF2S1 Antibody, EIF-2-alpha Antibody, EIF-2alpha Antibody, EIF2 alpha Antibody, EIF2 Antibody, EIF-2 Antibody, EIF-2A Antibody
Host	EIF2S1 antibody was produced in Mouse
Clonality:	Monoclonal
Isotype:	IgG2b,k
Clone Name:	AT5E10
Immunogen Species:	EIF2S1 antibody was raised against Human
Antigen Type:	Recombinant protein
Immunogen:	EIF2S1 antibody was raised against recombinant protein
Specificity:	Human EIF2S1
Reactivity:	Human
Purification:	Protein G purified
Presentation:	PBS, pH 7.4, 0.1% sodium azide
Recommended Storage:	Can be stored at 4°C. For long term storage, aliquot and store at -20°C. Avoid repeated freezing and thawing cycles.
Uses:	IHC - Paraffin (10 µg/ml), Western blot (1:1000), ELISA (Optimal dilution to be determined by the researcher)
Size:	50 µl
Concentration:	1 mg/ml

Immunohistochemistry Image:



Anti-EIF2S1 antibody IHC of human small intestine. Immunohistochemistry of formalin-fixed, paraffin-embedded tissue after heat-induced antigen retrieval. Antibody LS-B6273 concentration 10 ug/ml.

Western Blot Image:



Extracts of HeLa (50 ug) were resolved by SDS-PAGE, transferred to PVDF membrane and probed with anti-human EIF2S1 (1:1000). Proteins were visualized using a goat anti-mouse secondary antibody conjugated to HRP and an ECL detection system.

Requested From:

Japan

Laboratory Reagent For In Vitro Research Use Only

Not for resale without prior written consent from LifeSpan BioSciences, Inc.

Created on 9/24/2014

© 2014 LifeSpan BioSciences