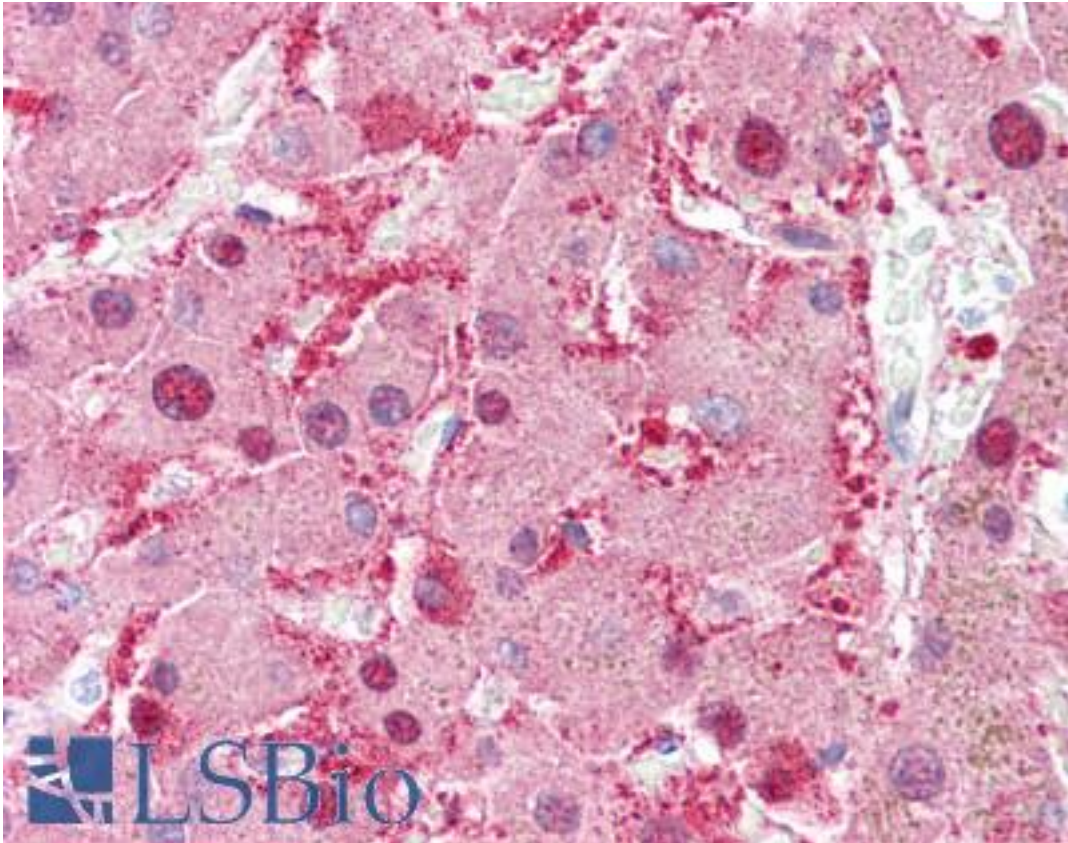


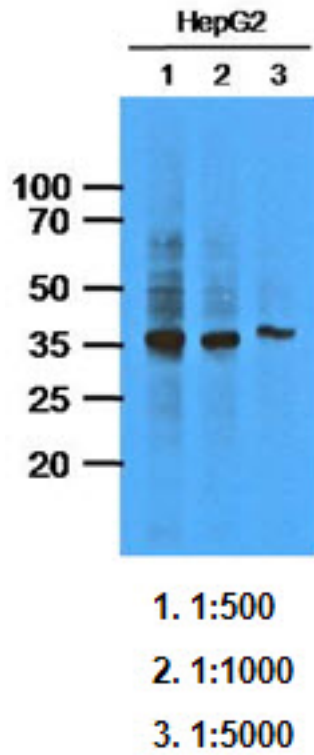
DDH / AKR1C1 Mouse anti-Human Monoclonal (AT6D10) Antibody - LS-B6269 - LSBio	
<b>CatalogID:</b>	LS-B6269
<b>Validation:</b>	This antibody replaces catalog number LS-C139554. It has been validated for use in the following assays: IHC-P.
<b>Target:</b>	aldo-keto reductase family 1, member C1 (AKR1C1)
<b>Synonyms:</b>	AKR1C1 Antibody, 2-ALPHA-HSD Antibody, 20-alpha-HSD Antibody, Aldo-keto reductase C Antibody, Bile acid binding protein Antibody, Chlordecone reductase homolog Antibody, DDH1 Antibody, Dihydrodiol dehydrogenase 2 Antibody, DD1 Antibody, DDH Antibody, Dihydrodiol dehydrogenase 1/2 Antibody, DD1/DD2 Antibody, Dihydrodiol dehydrogenase 1 Antibody, H-37 Antibody, HAKRC Antibody, HBAB Antibody, Indanol dehydrogenase Antibody, MBAB Antibody
<b>Host</b>	AKR1C1 antibody was produced in Mouse
<b>Clonality:</b>	Monoclonal
<b>Isotype:</b>	IgG1,k
<b>Clone Name:</b>	AT6D10
<b>Immunogen Species:</b>	DDH / AKR1C1 antibody was raised against Human
<b>Antigen Type:</b>	Recombinant protein
<b>Immunogen:</b>	DDH / AKR1C1 antibody was raised against recombinant protein
<b>Specificity:</b>	Human AKR1C1
<b>Reactivity:</b>	Human
<b>Purification:</b>	Protein G purified
<b>Presentation:</b>	PBS, pH 7.4, 0.1% sodium azide. Sourced in Ascites.
<b>Recommended Storage:</b>	Can be stored at 4°C. For long term storage, aliquot and store at -20°C. Avoid repeated freezing and thawing cycles.
<b>Uses:</b>	IHC - Paraffin (10 µg/ml), Western blot (1:1000), ELISA (Optimal dilution to be determined by the researcher)
<b>Size:</b>	50 µl
<b>Concentration:</b>	1 mg/ml

**Immunohistochemistry Image:**



Anti-AKR1C1 antibody IHC of human liver. Immunohistochemistry of formalin-fixed, paraffin-embedded tissue after heat-induced antigen retrieval. Antibody LS-B6269 concentration 10 ug/ml.

Western Blot Image:



Requested From:

Japan

Laboratory Reagent For In Vitro Research Use Only

Not for resale without prior written consent from LifeSpan BioSciences, Inc.

Created on 9/24/2014

© 2014 LifeSpan BioSciences