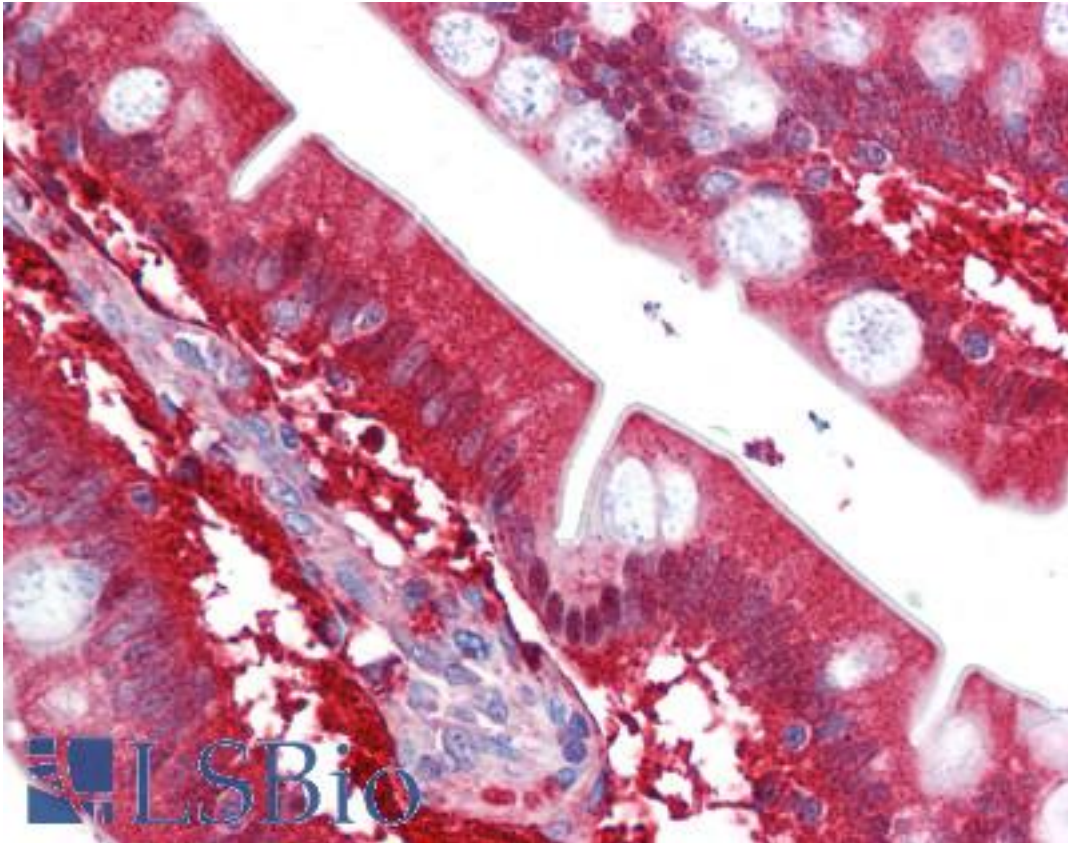


CBR / CBR1 Mouse anti-Human Monoclonal (AT4E12) Antibody - LS-B6268 - LSBio

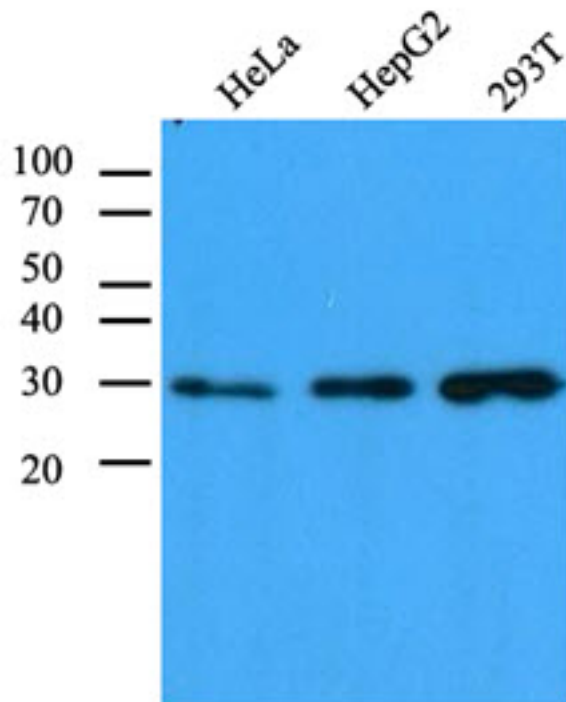
CatalogID:	LS-B6268
Validation:	This antibody replaces catalog number LS-C139553. It has been validated for use in the following assays: IHC-P.
Target:	carbonyl reductase 1 (CBR1)
Synonyms:	CBR1 Antibody, Carbonyl reductase 1 Antibody, Carbonyl reductase (NADPH) 1 Antibody, HCBR1 Antibody, Prostaglandin 9-ketoreductase Antibody, SDR21C1 Antibody, Carbonyl reductase [NADPH] 1 Antibody, CBR Antibody, CRN Antibody, Prostaglandin-E(2) 9-reductase Antibody
Host	CBR1 antibody was produced in Mouse
Clonality:	Monoclonal
Isotype:	IgG2a,k
Clone Name:	AT4E12
Immunogen Species:	CBR / CBR1 antibody was raised against Human
Antigen Type:	Recombinant protein
Immunogen:	CBR / CBR1 antibody was raised against recombinant protein
Specificity:	Human CBR1
Reactivity:	Human, Mouse
Purification:	Protein G purified
Presentation:	PBS, pH 7.4, 0.1% sodium azide. Sourced in Ascites.
Recommended Storage:	Can be stored at 4°C. For long term storage, aliquot and store at -20°C. Avoid repeated freezing and thawing cycles.
Uses:	IHC - Paraffin (10 µg/ml), Western blot (1:500 - 1:1000), ELISA (Optimal dilution to be determined by the researcher)
Size:	50 µl
Concentration:	1 mg/ml

Immunohistochemistry Image:



Anti-CBR1 antibody IHC of human small intestine. Immunohistochemistry of formalin-fixed, paraffin-embedded tissue after heat-induced antigen retrieval. Antibody LS-B6268 concentration 10 ug/ml.

Western Blot Image:



Cell lysates (40 ug) were resolved by SDS-PAGE, transferred to PVDF membrane and probed with anti-human CBR1 antibody (1:1000). Proteins were visualized using a goat anti-mouse secondary antibody conjugated to HRP and an ECL detection system.

Requested From:

Japan

Laboratory Reagent For In Vitro Research Use Only

Not for resale without prior written consent from LifeSpan BioSciences, Inc.

Created on 9/24/2014

© 2014 LifeSpan BioSciences