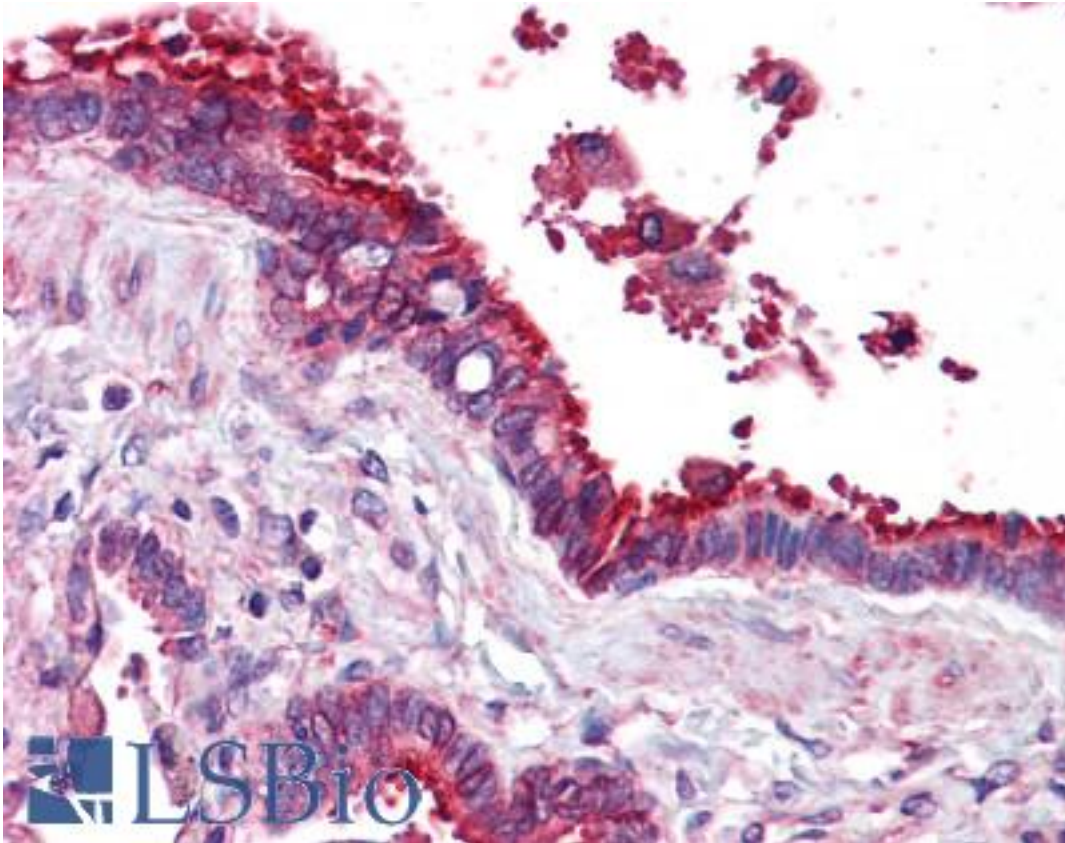


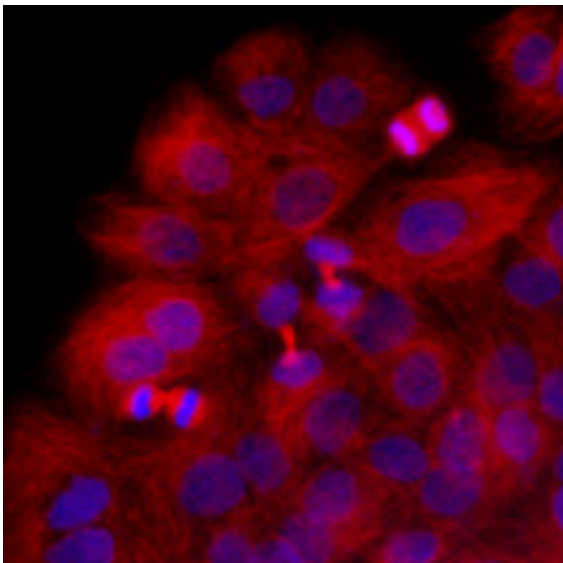
TUBB / Beta Tubulin Mouse anti-Human Monoclonal (AT5B2) Antibody - LS-B6267 - LSBio	
CatalogID:	LS-B6267
Validation:	This antibody replaces catalog number LS-C139549. It has been validated for use in the following assays: IHC-P.
Target:	tubulin, beta class I (TUBB)
Synonyms:	TUBB Antibody, Beta Tubulin Antibody, Beta 5-tubulin Antibody, Beta-4 tubulin Antibody, Beta1-tubulin Antibody, M40 Antibody, Tubulin beta-5 chain Antibody, Beta 1b tubulin Antibody, Class I beta-tubulin Antibody, OK/SW-cl.56 Antibody, TUBB5 Antibody, Tubulin beta chain Antibody, Tubulin beta polypeptide Antibody, Tubulin beta-1 chain Antibody, Tubulin, beta class I Antibody, Tubulin, beta polypeptide Antibody
Host	TUBB antibody was produced in Mouse
Clonality:	Monoclonal
Isotype:	IgG2b,k
Clone Name:	AT5B2
Immunogen Species:	TUBB / Beta Tubulin antibody was raised against Human
Antigen Type:	Recombinant protein
Immunogen:	TUBB / Beta Tubulin antibody was raised against recombinant protein
Specificity:	Human TUBB / Tubulin, Beta
Reactivity:	Human, Mouse
Purification:	Protein G purified
Presentation:	PBS, pH 7.4, 0.1% sodium azide. Sourced in Ascites.
Recommended Storage:	Can be stored at 4°C. For long term storage, aliquot and store at -20°C. Avoid repeated freezing and thawing cycles.
Uses:	IHC - Paraffin (5 µg/ml), Immunofluorescence (1:1000), Western blot (1:10000), ELISA (Optimal dilution to be determined by the researcher)
Size:	50 µl
Concentration:	1 mg/ml

Immunohistochemistry Image:



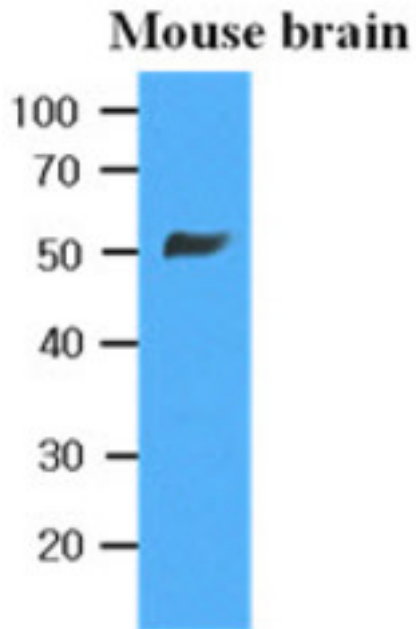
Anti-TUBB / Tubulin, Beta antibody IHC of human lung, respiratory epithelium.
Immunohistochemistry of formalin-fixed, paraffin-embedded tissue after heat-induced antigen retrieval. Antibody LS-B6267 concentration 5 ug/ml.

Immunofluorescence Image:



Immunofluorescence of HaCaT cells stained with Hoechst 3342 (Blue) for nucleus staining and monoclonal anti-human beta-Tubulin antibody (1:1000) with Texas Red (Red).

Western Blot Image:



Extracts of Mouse brain (35 ug) were resolved by SDS-PAGE, transferred to PVDF membrane and probed with anti-human beta-Tubulin (1:10000). Proteins were visualized using a goat anti-mouse secondary antibody conjugated to HRP and an ECL detection system.

Requested From:

Japan

Laboratory Reagent For In Vitro Research Use Only

Not for resale without prior written consent from LifeSpan BioSciences, Inc.

Created on 9/24/2014

© 2014 LifeSpan BioSciences