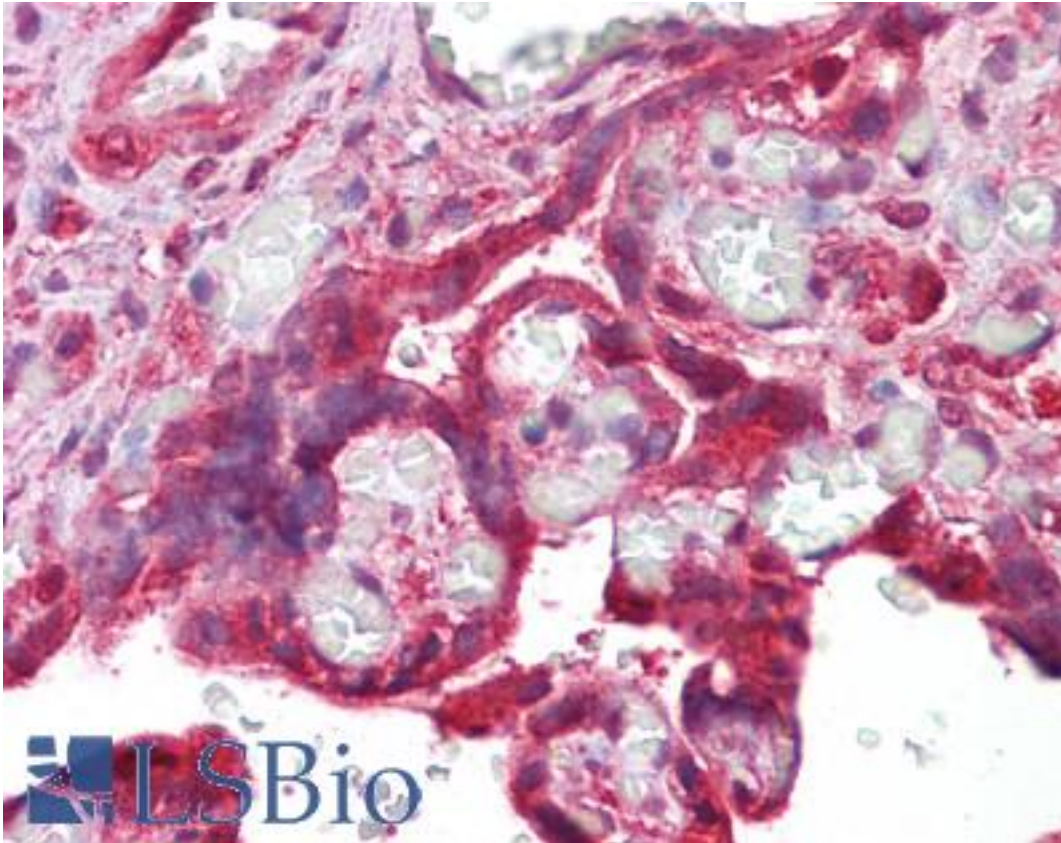


**CDK6 Mouse anti-Human Monoclonal Antibody - LS-B6258 - LSBio**

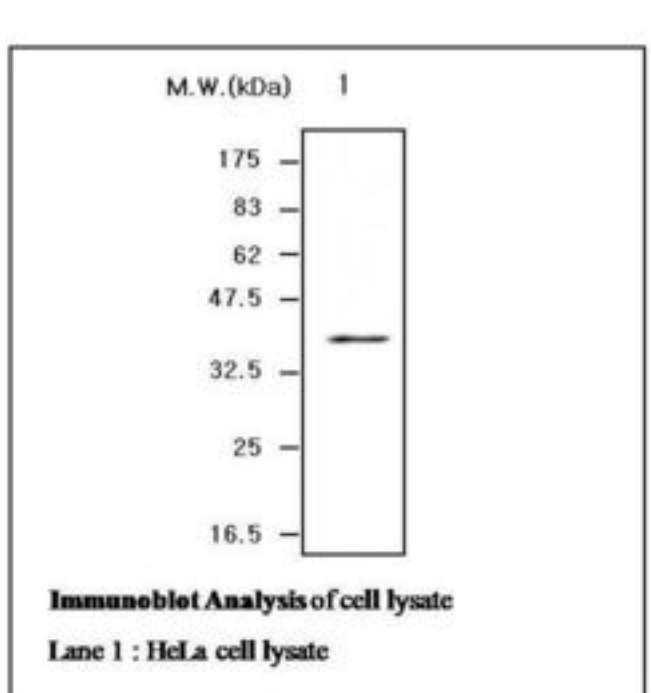
<b>CatalogID:</b>	LS-B6258
<b>Validation:</b>	This antibody replaces catalog number LS-C62009. It has been validated for use in the following assays: IHC-P.
<b>Target:</b>	cyclin-dependent kinase 6 (CDK6)
<b>Synonyms:</b>	CDK6 Antibody, CDKN6 Antibody, Cell division protein kinase 6 Antibody, Cyclin-dependent kinase 6 Antibody, Crk2 Antibody, PLSTIRE Antibody
<b>Family / Subfamily:</b>	Protein Kinase / CDC2/CDK
<b>Host</b>	CDK6 antibody was produced in Mouse
<b>Clonality:</b>	Monoclonal
<b>Isotype:</b>	IgG2b,k
<b>Immunogen Species:</b>	CDK6 antibody was raised against Human
<b>Immunogen:</b>	CDK6 antibody was raised against recombinant human CDK6 purified from E. coli.
<b>Reactivity:</b>	Human
<b>Purification:</b>	Ammonium sulfate precipitation
<b>Presentation:</b>	HEPES with 0.15M NaCl, 0.01% BSA, 0.03% sodium azide, and 50% glycerol
<b>Recommended Storage:</b>	Long term: -20°C; Short term: +4°C; Avoid freeze-thaw cycles.
<b>Uses:</b>	IHC - Paraffin (1:200), Western blot (1:500), ELISA (Optimal dilution to be determined by the researcher)
<b>Size:</b>	50 µl

**Immunohistochemistry Image:**



Anti-CDK6 antibody IHC of human placenta. Immunohistochemistry of formalin-fixed, paraffin-embedded tissue after heat-induced antigen retrieval. Antibody LS-B6258 dilution 1:200.

**Western Blot Image:**



<b>Requested From:</b>	Japan
Laboratory Reagent For In Vitro Research Use Only	
Not for resale without prior written consent from LifeSpan BioSciences, Inc.	
Created on 9/24/2014	
© 2014 LifeSpan BioSciences	