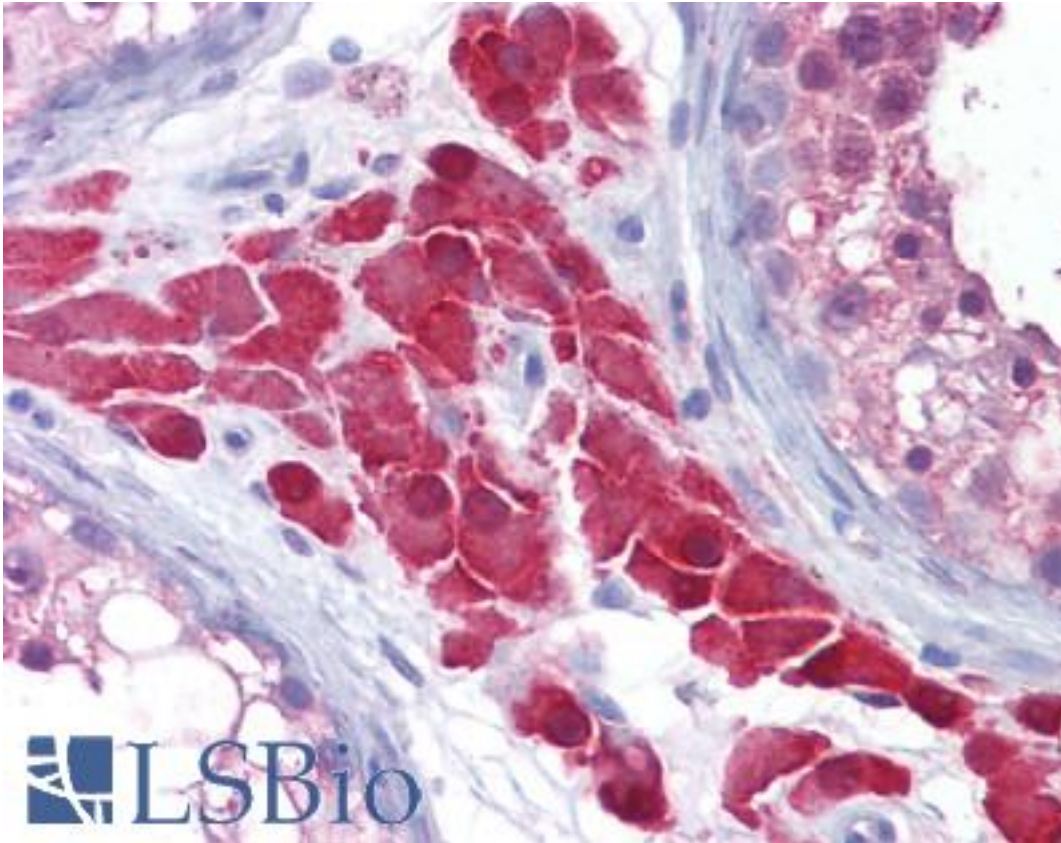


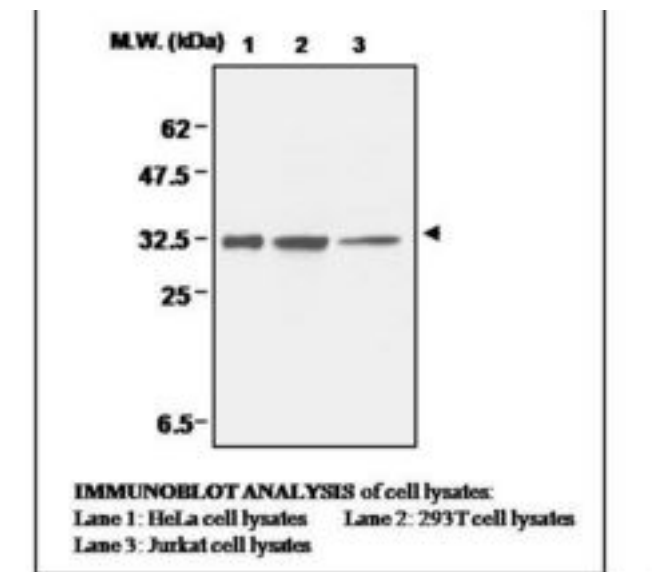
CCS Mouse anti-Human Monoclonal (1G1) Antibody - LS-B6256 - LSBio	
CatalogID:	LS-B6256
Validation:	This antibody replaces catalog number LS-C61896. It has been validated for use in the following assays: IHC-P.
Target:	copper chaperone for superoxide dismutase (CCS)
Synonyms:	CCS Antibody
Host	CCS antibody was produced in Mouse
Clonality:	Monoclonal
Isotype:	IgG1,k
Clone Name:	1G1
Immunogen Species:	CCS antibody was raised against Human
Immunogen:	CCS antibody was raised against recombinant human CCS purified from E. coli.
Reactivity:	Human
Purification:	Ammonium sulfate precipitation
Presentation:	HEPES with 0.15M NaCl, 0.01% BSA, 0.03% sodium azide, and 50% glycerol. Sourced in Ascites.
Recommended Storage:	Long term: -20°C; Short term: +4°C; Avoid freeze-thaw cycles.
Uses:	IHC - Paraffin (1:200), Western blot (1:200 - 1:1000), ELISA (Optimal dilution to be determined by the researcher)
Size:	50 µl
Concentration:	1 mg/ml

Immunohistochemistry Image:



Anti-CCS antibody IHC of human testis. Immunohistochemistry of formalin-fixed, paraffin-embedded tissue after heat-induced antigen retrieval. Antibody LS-B6256 dilution 1:200.

Western Blot Image:



Requested From:

Japan

Laboratory Reagent For In Vitro Research Use Only

Not for resale without prior written consent from LifeSpan BioSciences, Inc.

Created on 9/24/2014

© 2014 LifeSpan BioSciences