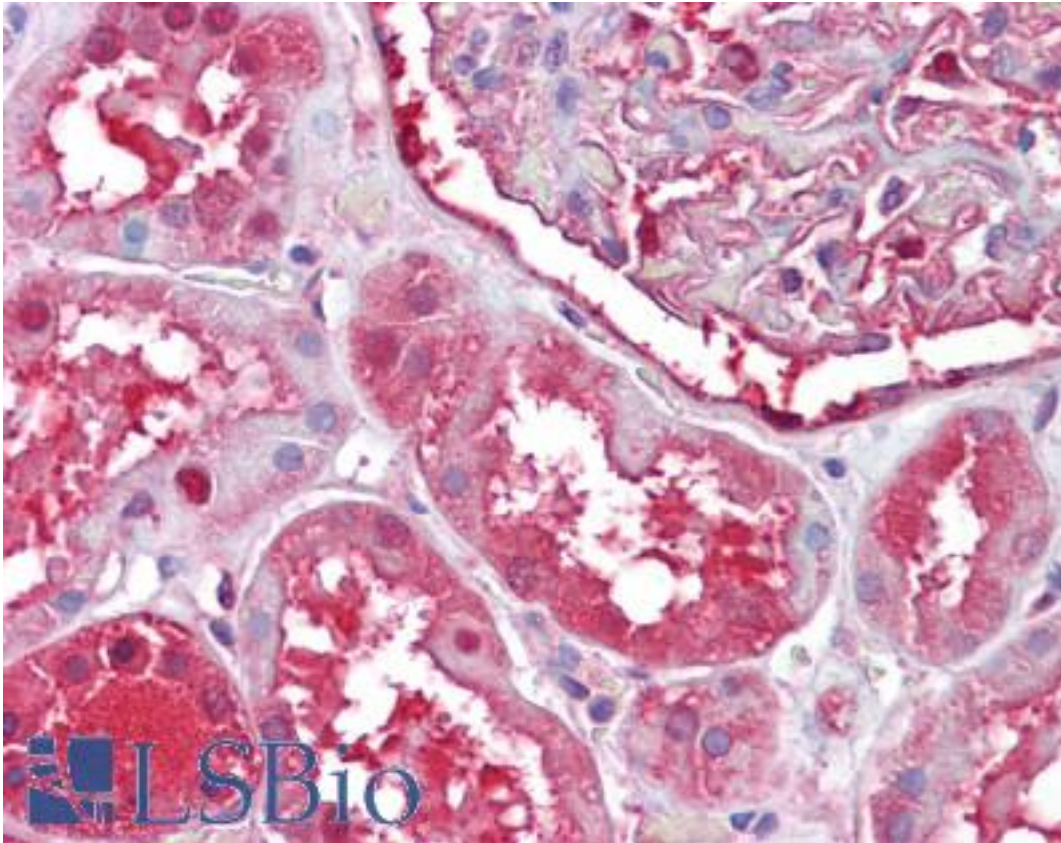


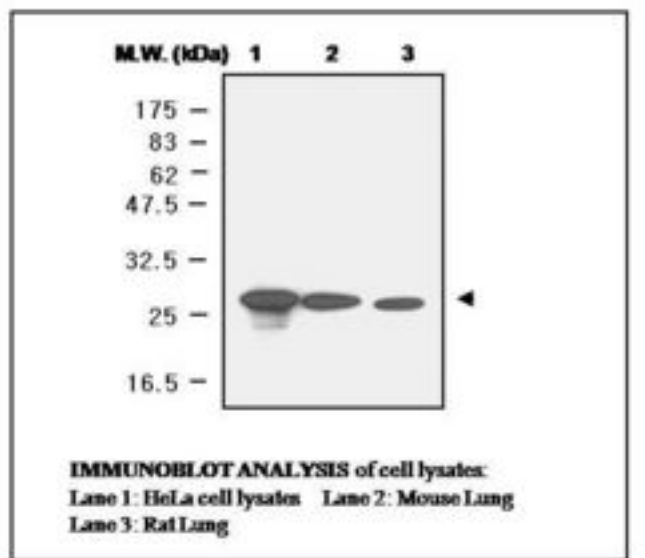
PRDX6 / Peroxiredoxin 6 Mouse anti-Human Monoclonal (4A3) Antibody - LS-B6255 - LSBio	
<b>CatalogID:</b>	LS-B6255
<b>Validation:</b>	This antibody replaces catalog number LS-C61895. It has been validated for use in the following assays: IHC-P.
<b>Target:</b>	peroxiredoxin 6 (PRDX6)
<b>Synonyms:</b>	PRDX6 Antibody, 24 kDa protein Antibody, 1-Cys Antibody, 1-Cys peroxiredoxin Antibody, 1-Cys PRX Antibody, AOP2 Antibody, Antioxidant protein 2 Antibody, AiPLA2 Antibody, KIAA0106 Antibody, Liver 2D page spot 40 Antibody, NSGPx Antibody, p29 Antibody, Peroxiredoxin 6 Antibody, Peroxiredoxin-6 Antibody, Red blood cells page spot 12 Antibody
<b>Host</b>	PRDX6 antibody was produced in Mouse
<b>Clonality:</b>	Monoclonal
<b>Isotype:</b>	IgG2b,k
<b>Clone Name:</b>	4A3
<b>Immunogen Species:</b>	PRDX6 / Peroxiredoxin 6 antibody was raised against Human
<b>Immunogen:</b>	PRDX6 / Peroxiredoxin 6 antibody was raised against recombinant human PRDX6 / Peroxiredoxin 6 purified from E. coli.
<b>Reactivity:</b>	Human, Mouse, Rat
<b>Purification:</b>	Ammonium sulfate precipitation
<b>Presentation:</b>	HEPES with 0.15M NaCl, 0.01% BSA, 0.03% sodium azide, and 50% glycerol. Sourced in Ascites.
<b>Recommended Storage:</b>	Long term: -20°C; Short term: +4°C; Avoid freeze-thaw cycles.
<b>Uses:</b>	IHC - Paraffin (1:200), Western blot (1:2000), ELISA (Optimal dilution to be determined by the researcher)
<b>Size:</b>	50 µl
<b>Concentration:</b>	1 mg/ml

**Immunohistochemistry Image:**



Anti-PRDX6 / Peroxiredoxin 6 antibody IHC of human kidney. Immunohistochemistry of formalin-fixed, paraffin-embedded tissue after heat-induced antigen retrieval. Antibody LS-B6255 dilution 1:200.

**Western Blot Image:**



Requested From:

Japan

Laboratory Reagent For In Vitro Research Use Only

Not for resale without prior written consent from LifeSpan BioSciences, Inc.

Created on 9/24/2014

© 2014 LifeSpan BioSciences