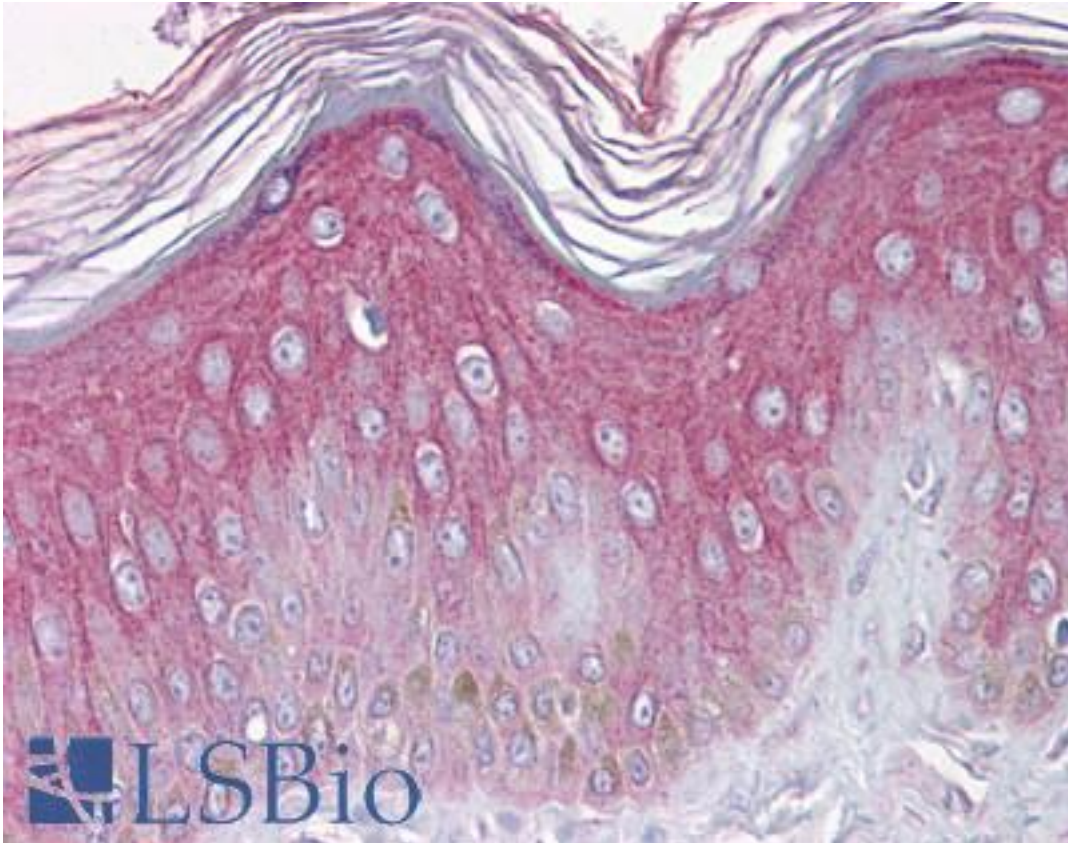


FGFR1 Mouse anti-Human Monoclonal (N-Terminus) (M19B2) Antibody - LS-B6250 - LSBio

CatalogID:	LS-B6250
Validation:	This antibody replaces catalog number LS-C83402. It has been validated for use in the following assays: IHC-P.
Target:	fibroblast growth factor receptor 1 (FGFR1)
Synonyms:	FGFR1 Antibody, BFGF receptor Antibody, BFGF-R Antibody, BFGF-R-1 Antibody, CD331 Antibody, Cek1 Antibody, CD331 antigen Antibody, FGFR1/PLAG1 fusion Antibody, FLT2 Antibody, Fgf-flg Antibody, FGFR Antibody, FGFR-1 Antibody, Fms-like tyrosine kinase 2 Antibody, HBGFR Antibody, HH2 Antibody, Hydroxyaryl-protein kinase Antibody, FGF receptor 1 Antibody, Fms-related tyrosine kinase 2 Antibody, Proto-oncogene c-Fgr Antibody, BFGFR Antibody, CEK Antibody, FLT-2 Antibody, HBGF receptor Antibody, KAL2 Antibody, OGD Antibody
Family / Subfamily:	Protein Kinase / FGF Receptor
Host	FGFR1 antibody was produced in Mouse
Clonality:	Monoclonal
Isotype:	IgG1
Clone Name:	M19B2
Immunogen Species:	FGFR1 antibody was raised against Human
Antigen Type:	Recombinant protein
Immunogen:	FGFR1 antibody was raised against recombinant human ectodomain of FGFR1~ expressed in E. coli beginning with proline 23; antigen contained NH2-terminal gly-ser-pro-gly-ile and C-terminal glu-phe sequences.
Specificity:	Reacts with both alpha and beta isoforms. Epitope is within the NH2-terminus of Ig loop II sequence Lys145 and Glu159 between the acidic box and heparin-binding sequence of FGFR1.
Epitope:	N-Terminus
Reactivity:	Human
Purification:	Protein G purified
Presentation:	PBS, pH 7.4
Recommended Storage:	Store at -20°C. Aliquot to avoid freeze/thaw cycles.
Usage Summary:	Western blotting: at 1 ug/ml recognizes 10 ng recombinant bacterial, baculoviral, or native FGFR1. Immunoprecipitation: native, recombinant, and ligand-labeled FGFR1. Immunohistochemistry: paraformaldehyde fixed cells and FFPE human tissues.
Uses:	IHC - Paraffin (10 µg/ml), Western blot (1 µg/ml), Immunoprecipitation (Optimal dilution to be determined by the researcher)
Size:	125 µg
Concentration:	1 mg/ml

Immunohistochemistry Image:



Anti-FGFR1 antibody IHC of human skin. Immunohistochemistry of formalin-fixed, paraffin-embedded tissue after heat-induced antigen retrieval. Antibody LS-B6250 concentration 10 ug/ml.

Requested From:

Japan

Laboratory Reagent For In Vitro Research Use Only

Not for resale without prior written consent from LifeSpan BioSciences, Inc.

Created on 9/24/2014

© 2014 LifeSpan BioSciences