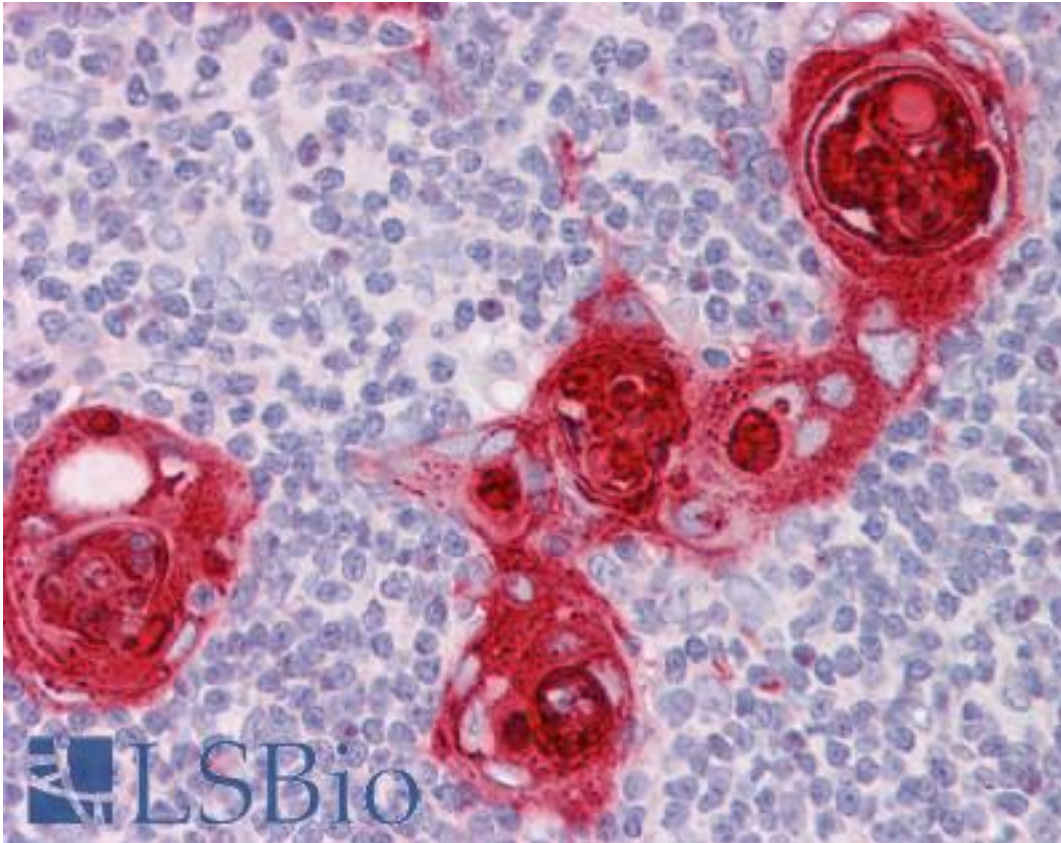


CXCR6 Goat anti-Human Polyclonal (C-Terminus) Antibody - LS-B6246 - LSBio

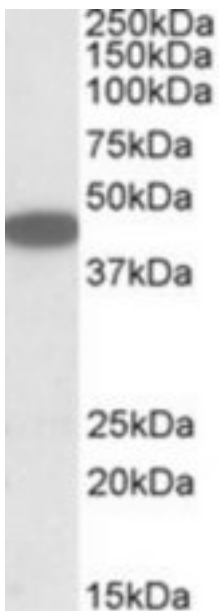
CatalogID:	LS-B6246
Validation:	This antibody replaces catalog number LS-C112964. It has been validated for use in the following assays: IHC-P.
Target:	chemokine (C-X-C motif) receptor 6 (CXCR6)
Synonyms:	CXCR6 Antibody, CD186 antigen Antibody, CXCR-6 Antibody, STRL33 Antibody, TYMSTR Antibody, BONZO Antibody, CD186 Antibody, CDw186 Antibody, CXCR6 Antibody
Family / Subfamily:	GPCR / Chemokine
Host	CXCR6 antibody was produced in Goat
Clonality:	Polyclonal
Immunogen Species:	CXCR6 antibody was raised against Human
Antigen Type:	Synthetic peptide
Immunogen:	CXCR6 antibody was raised against synthetic peptide C-SEDNSKTFSASHN from the C-terminus of human CXCR6 (NP_006555.1). Percent identity by BLAST analysis: Human, Chimpanzee, Gorilla, Monkey (100%); Marmoset, Rat (92%); Mouse, Hamster, Panda, Rabbit (85%).
Specificity:	Human CXCR6.
Epitope:	C-Terminus
Reactivity:	Human, Chimpanzee, Gorilla
Predicted Reactivity:	Monkey, Rat
Purification:	Immunoaffinity purified
Presentation:	Tris-buffered saline, pH 7.3, 0.5% BSA, 0.02% sodium azide
Recommended Storage:	Store at -20°C. Minimize freezing and thawing.
Usage Summary:	Peptide ELISA: antibody detection limit dilution 1:2000. Western blot: Approx 40-45kDa band observed in HEK293 lysates (calculated MW of 39.3kDa according to NP_006555.1). Recommended concentration: 0.3-1 ug/ml. Tested in IHC-P using human FFPE tissues.
Uses:	IHC - Paraffin (3.75 µg/ml), Western blot (0.3 - 1 µg/ml), ELISA (1:2000) (Optimal dilution to be determined by the researcher)
Size:	50 µg
Concentration:	0.5 mg/ml

Immunohistochemistry Image:



Anti-CXCR6 antibody IHC of human thymus. Immunohistochemistry of formalin-fixed, paraffin-embedded tissue after heat-induced antigen retrieval. Antibody LS-B6246 concentration 3.75 ug/ml.

Western Blot Image:



CXCR6 antibody (1 ug/ml) staining of HEK293 lysate (35 ug protein/ml in RIPA buffer). Primary incubation was 1 hour. Detected by chemiluminescence.

Requested From:	Japan
Laboratory Reagent For In Vitro Research Use Only	
Not for resale without prior written consent from LifeSpan BioSciences, Inc.	
Created on 9/24/2014	
© 2014 LifeSpan BioSciences	