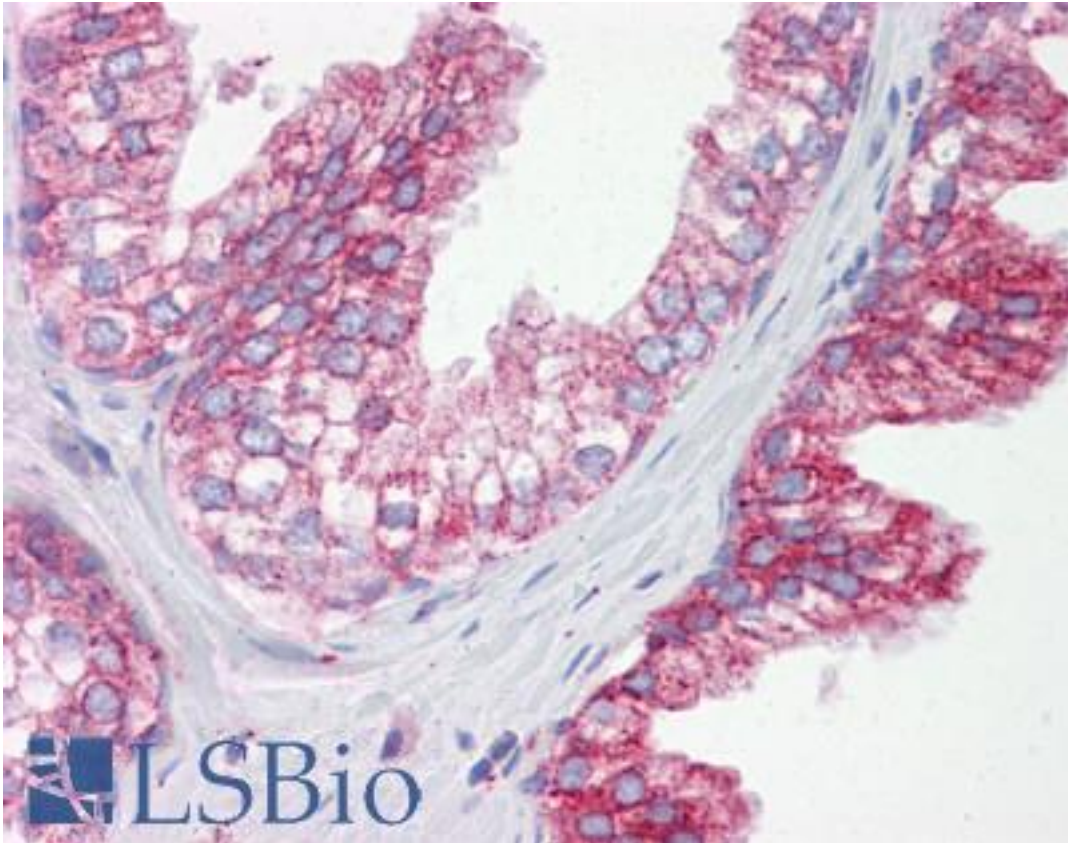


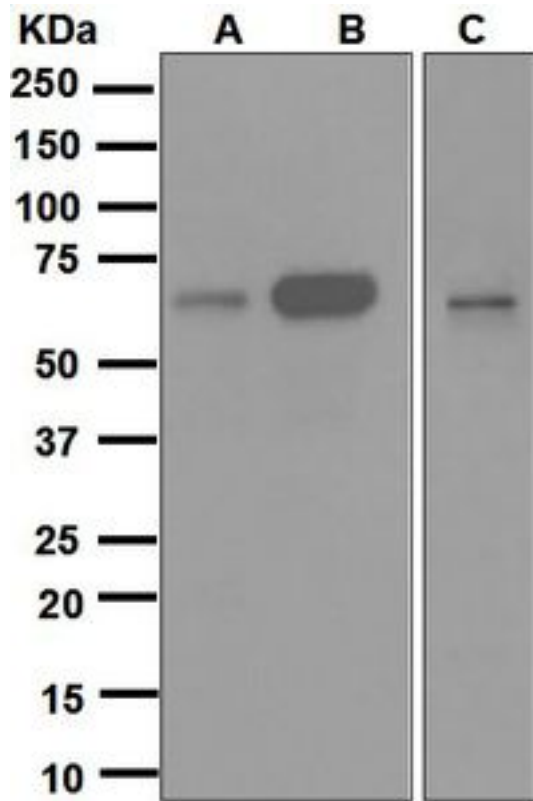
CDC25B Rabbit anti-Human Monoclonal (Internal) (EPR3459(2)) Antibody - LS-B6243 - LSBio	
CatalogID:	LS-B6243
Validation:	This antibody replaces catalog number LS-C138451. It has been validated for use in the following assays: IHC-P.
Target:	cell division cycle 25B (CDC25B)
Synonyms:	CDC25B Antibody, CDC25B phosphatase Antibody, Cell division cycle 25B Antibody, M-phase inducer phosphatase 2 Antibody, CDC25HU2 Antibody
Family / Subfamily:	Protein Phosphatase / CDC25
Host	CDC25B antibody was produced in Rabbit
Clonality:	Monoclonal
Clone Name:	EPR3459(2)
Immunogen Species:	CDC25B antibody was raised against Human
Antigen Type:	Synthetic peptide
Immunogen:	CDC25B antibody was raised against synthetic peptide
Specificity:	Human CDC25B.
Epitope:	Internal
Reactivity:	Human
Purification:	Tissue culture supernatant
Presentation:	Tris-Glycine-NaCl or PBS, pH 7.2-7.4, 40-50% Glycerol, 0.01% sodium azide, 0.05% BSA
Recommended Storage:	Store at -20°C.
Uses:	IHC - Paraffin (1:50), Western blot (1:10000 - 1:50000), Immunoprecipitation (1:10 - 1:100) (Optimal dilution to be determined by the researcher)
Size:	50 µl
Concentration:	0.49 mg/ml

Immunohistochemistry Image:



Anti-CDC25B antibody IHC of human prostate. Immunohistochemistry of formalin-fixed, paraffin-embedded tissue after heat-induced antigen retrieval. Antibody LS-B6243 dilution 1:50.

Western Blot Image:



Western blot analysis on (A) K562, (B) U937, and (C) THP-1 cell lysates using anti-Cdc25B antibody.

Requested From:

Japan

Laboratory Reagent For In Vitro Research Use Only

Not for resale without prior written consent from LifeSpan BioSciences, Inc.

Created on 9/24/2014

© 2014 LifeSpan BioSciences