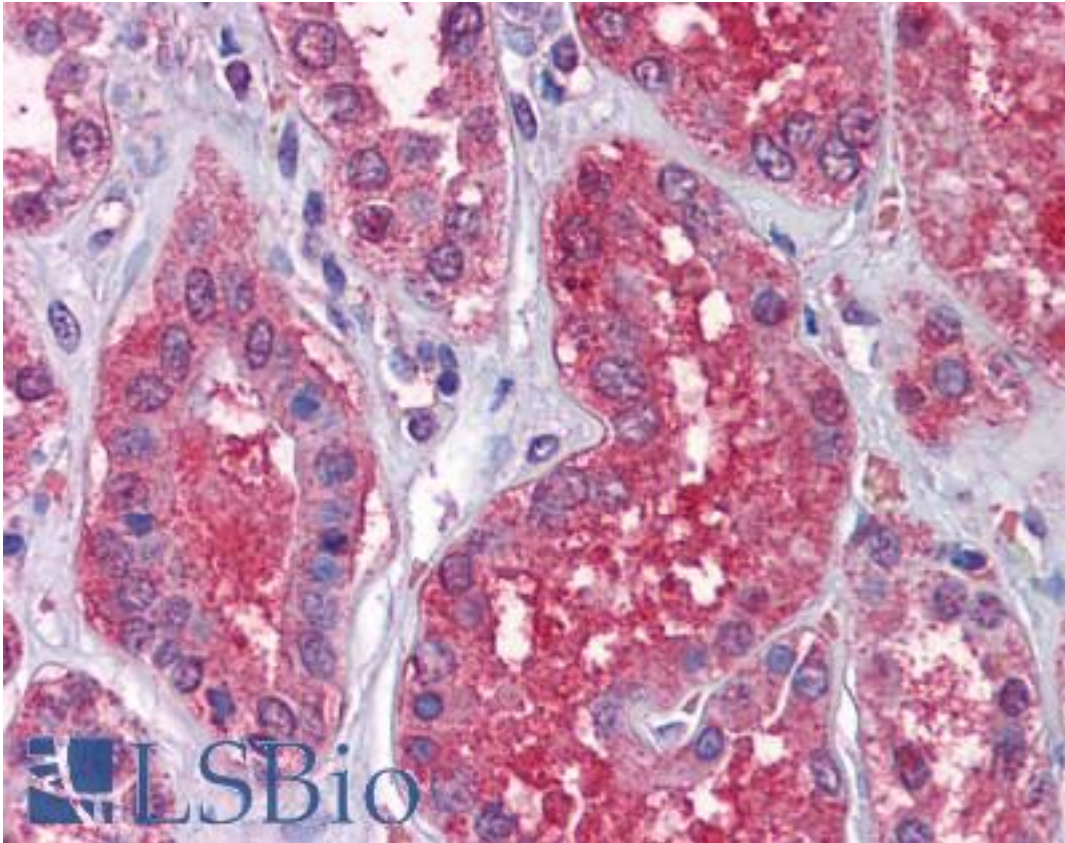


RAF1 / RAF Mouse anti-Human Monoclonal (N-Terminus) Antibody - LS-B6239 - LSBio	
CatalogID:	LS-B6239
Validation:	This antibody replaces catalog number LS-C9876. It has been validated for use in the following assays: IHC-P.
Target:	v-raf-1 murine leukemia viral oncogene homolog 1 (RAF1)
Synonyms:	RAF1 Antibody, C-Raf Antibody, C-raf-1 Antibody, CRAF Antibody, NS5 Antibody, Raf-1 Antibody, Proto-oncogene c-RAF Antibody, Oncogene RAF1 Antibody, RAF Antibody, Raf1 kinase Antibody
Family / Subfamily:	Protein Kinase / Raf
Host	RAF1 antibody was produced in Mouse
Clonality:	Monoclonal
Isotype:	IgG1,k
Immunogen Species:	RAF1 / RAF antibody was raised against Human
Immunogen:	RAF1 / RAF antibody was raised against purified recombinant human Raf-1 (75kD).
Specificity:	Recognizes human Raf-1 N-terminal, aa1-240.
Epitope:	N-Terminus
Reactivity:	Human
Purification:	Protein G purified
Presentation:	PBS, pH 7.2, 40% glycerol.
Recommended Storage:	Short term 4°C, long term aliquot and store at -20°C, avoid freeze thaw cycles.
Usage Summary:	Suitable for use in ELISA, IHC-P and Western Blot. Not suitable for detection of Raf-1 expression and phosphorylation in HeLa cells. Western Blot: 1 ug/ml will allow visualization of 0.2 ug/lane of human Raf-1. A main band (75kD) was visible.
Uses:	IHC - Paraffin (10 µg/ml), Western blot (1 µg/ml), ELISA (Optimal dilution to be determined by the researcher)
Size:	50 µg
Concentration:	1 mg/ml

Immunohistochemistry Image:



Anti-RAF1 antibody IHC of human kidney. Immunohistochemistry of formalin-fixed, paraffin-embedded tissue after heat-induced antigen retrieval. Antibody LS-B6239 concentration 10 ug/ml.

Requested From:

Japan

Laboratory Reagent For In Vitro Research Use Only

Not for resale without prior written consent from LifeSpan BioSciences, Inc.

Created on 9/24/2014

© 2014 LifeSpan BioSciences